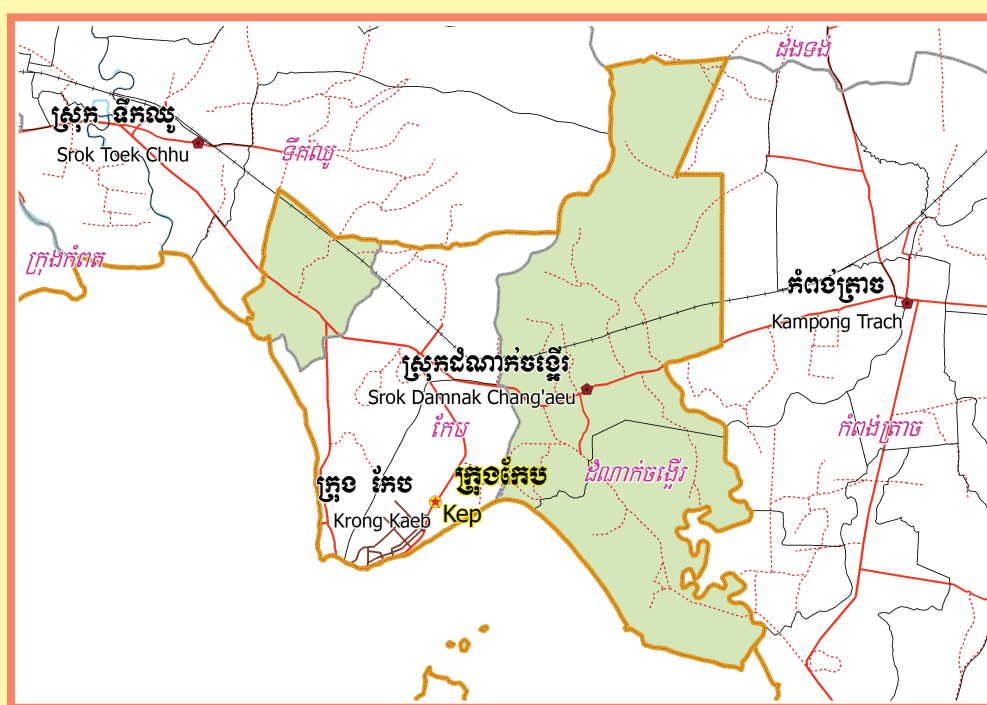


KINGDOM OF CAMBODIA
Nation Religion King



**National Committee for Sub-National
Democratic Development (NCDD)**



DAMNAK CHANG'AEUR DISTRICT DATA BOOK 2009

District Code Nr: 2301
Kep Province

October 2009

Damnak Chang'aur District Data Book 2009

District Code Nr: 2301

Kep Province

Table of Contents

List of Abbreviations	i
Glossary.....	ii
Preface	vi
Introduction	vii
SECTION A: GEOGRAPHY	1
1 Administration and Infrastructure.....	3
2 Land Use and Natural Resources.....	5
3 Geography	7
3.1 Land Area	7
3.2 Distances between Offices	7
SECTION B: DISTRICT PROFILE	9
1 General Information	11
1.1 Population of the District.....	11
1.2 Occupations	12
1.3 Property	14
2 Infrastructure and Economy.....	16
2.1 Roads in meters over 3 years.....	16
2.2 Sewerage Pipes in meters over 3 years.....	16
2.3 Drainage and Bridges	16
2.4 Services in the District	16
2.5 Agriculture.....	17
3 Social Aspects	29
3.1 Education	29
3.2 Health.....	35
3.3 Water and Sanitation	37
3.4 Vulnerable groups.....	41
3.5 Migration	43
4 Natural Resources and Environment (NRE).....	45
4.1 Families involved with NRE issues over 3 years	45
4.2 Percentage of Families involved with Natural Resource issues, by Commune, for 2008	45
4.3 Percentage Houses with access to Garbage collection and Families affected by environmental Pollution, by Commune, for 2008	45
4.4 Percentage Families using chemical Fertilizer and chemical Pesticides, by Commune, for 2008 ..	45
5 Administration and Security	46

5.1	Birth Registration across 3 years.....	46
5.2	Number of unregistered Infants born in 2008, by Commune	46
5.3	Registered criminal Cases over 3 years	46
5.4	Registered criminal Cases per 10,000 people, by Commune, for 2008.....	46
5.5	Number of registered Land Disputes, by Commune, in 2008	46
6	Gender	47
6.1	Registered Domestic Violence over 3 years.....	47
6.2	Percentage of registered cases of Families experiencing domestic Violence, by Commune, in 2008	47
6.3	Women's involvement over 3 years.....	47
6.4	Percentage of Female Participants in Civil Society and of 18-60 year women with uncertain Jobs, by Commune, in 2008	48
6.5	Female-headed Households over 3 years.....	48
6.6	Percentage female-headed Households and with Children of less than 5 years old, by Commune, in 2008	48
7	Indigenous People in the District	49
7.1	Ethnic Minorities in the District over 3 years.....	49
7.2	Other Minorities in the District over 3 years.....	49
	SECTION C: PLANS AND PROJECTS	51
8	Priorities and Plans	53
8.1	Priorities of Commune Councils for 2009 in the District by Sector	53
8.2	Temporary Agreements by Commune, for 2009	57
8.3	Outputs, estimated and actual costs of C/S Fund Projects between 2005 and 2008, by Commune	67
8.4	Total Expenditure on C/S Fund Projects by sector and commune between 2005 and 2008.....	68
8.5	Actual 2009 C/S Fund projects by Commune	68
9	District level Projects from 2006 to 2009	69
9.1	District Initiative Infrastructure Projects from 2006 to 2009	69
9.2	District Initiative Service Projects from 2006 to 2009	70
9.3	Inter Commune Council Projects in 2008 and 2009	71
9.4	Other Projects in 2008 and 2009	71
	SECTION D: SERVICES AND ORGANIZATIONS	73
10	Infrastructure.....	75
10.1	Length of and Expenditure on Roads in 2008, by District	75
10.2	Scale of and Expenditure on Irrigation in 2008, by District.....	75
10.3	Power Supply in 2008, by District	76
11	Health Facilities.....	77

11.1 Health Facilities in the Province, by Operational District.....	77
11.2 Health Facilities and Staff in the province, by Operational District.....	77
11.3 Deliveries in 2007 in the Province, by Operational District.....	78
12 Education	79
12.1 Schools, Classes, Students, Staff, for for all levels, for 2007/2008 by District.....	79
12.2 Characteristics of Schools and School Principals for 2007/2008 by Commune	79
12.3 Enrolment by Level of Education, 2006/2007 by Commune	79
12.4 Enrolment by Level of Education, 2007/2008 by Commune	80
12.5 Aspects of Enrolment for 2007/2008 by Commune.....	80
12.6 School Buildings for all schools in the District for 2007/2008, by Commune	80
12.7 Conditions of Classrooms and Existence of Separate School Office and Library, by Commune	80
12.8 Community Participation and Financing across all schools in the District for 2007/2008 by Commune	81
12.9 Percentage Student Flow Rates and Graduation by level 2006/2007, by Commune	81
13 Staff and Resources at the District	82
13.1 District Councilors elected in 2009	82
13.2 Committees of the Council.....	82
13.3 Board of Governors.....	82
13.4 Offices under Sala Krong, Sala Srok and Sala Khan	83
13.5 Municipality/District/Khan line offices.....	83
13.6 Properties and Equipment of District Administration	83
13.7 Registered Revenue of the District Administration in 2008	84
13.8 Services in the District	84
13.9 Civil Society Organizations active in the District.....	85
13.10 Private Sector Organizations.....	86
SECTION E: POVERTY DATA	87
14 Data on Poverty	89
14.1 Predicted Poverty Rates for 2009, by commune	89
14.2 Poverty data from survey.....	89

List of Abbreviations

#	Number
AGR	Agriculture
BR	Birth Registration
C. Pilot	Piloted Commune
C/S	Commune / Sangkat
CBO	Community-Based Organization
CDB	Commune Database
CDPD	Commune Development and Planning Database
CIP	Commune Investment plan
CLTS	Community Led-Total Sanitation
Comm.	Commune
Com Cov	Commune Covered
CPA	Complementary Package of Activities
CPS	Community Preschool
CCWC	Commune Committees for Women and Children
DANIDA	Danish International Development Agency
DDLG	Democratic Development and Local Governance Project (EC-UNDP)
DFID	Department For International Development (UK)
DIP	District Initiative Project
DIS	District Information System
District PDRD	District Office of Rural Development
District WP	District Work Plan
DIW	District Integration Workshop
DoLA	Department of Local Administration
Dr	Doctor
DWRM	District Office of Water Resource and Meterology
ECD	Early Childhood education (part of PE)
EMIS	Education Management Information System
Event IC	Celebration of International Days
FDH	Former District Hospital
GTZ	German Society for Technical Cooperation (Gesellschaft für Technische Zusammenarbeit GmbH)
Ha	Hectare
HC	Health Center
HC (NB)	Health Center (no building)
HH	Headed Household
HSI	Intervention for Health
HP	Health Post
HW	Hand Washing
ICC	Inter Commune Council
IFAD	International Fund for Agricultural Development
IND	Industry
Inter-commune	Inter-Commune Project Management Committee or Inter-commune project
IO	International Organization
LASED	Land Allocation for Socio-Economic Development
LGCR	Local Governance for Children's Rights
M&E	Monitoring and Evaluation
MA	Medical Assistant
MoEYS	Ministry of Education, Youth and Sports
MoH	Ministry of Health

MoP	Ministry of Planning
MPA	Minimum Package of Activities
MW1	Primary Midwives
MW2	Secondary Midwives
n/a	Not available
NCD	National Contracts Database
NCDD	National Committee for Sub-National Democratic Development
NGO	Non-Governmental Organization
NRML	Natural Resources Management and Livelihood
NU1	Primary Nurse
NU2	Secondary Nurse
OD	Operational District
ODF	Open Defecation Free
Ope. Costs	Operational Costs
Others	Other Staff
PBW	Public Works
PDoEYS	Provincial Department of Education, Youth and Sport
PDRD	Provincial Department of Rural Development
PDWRM	Provincial Department of Water Resource and Meteorology
PE	Parenting Education
PHAST	Participatory Hygiene and Sanitation Transformation
PHD	Provincial Health Department
PID	Project Information Database
PMC	Project Management Committee
Pop 04-05	Population Covered 2004 or 2005
PSDD	Project to Support Democratic Development through Decentralization and Deconcentration
RRD	Rural Road Development
RH	Referral Hospital
RILGP	Rural Investment and Local Governance Project
RPRP	Rural Poverty Reduction Program
RuLIP	Rural Livelihoods Improvement Program
SIDA	Swedish International Development Cooperation Agency
SPPA	Senior Provincial Program Advisor
TBA	Traditional Birth Attendant
UNDP	United Nations Development Project
UNICEF	United Nations Children's Fund
Vil	Village
Vil Cov	Village Covered
VIL-HC	Distance from Village to Health Center
WASH	Water, Sanitation and Hygiene
WRM	Water Resource and Meteorology

Glossary

C/S Fund: The Commune/Sangkat Fund is established and managed by the Government of Cambodia to provide financial support for development projects and administrative costs of Commune/Sangkat Councils. The amount is determined as a percentage of the National Budget (for 2009: 2.8% over the 2008 budget) and is expected to increase gradually over the years. The total 2009 budget under this fund is \$ 27,643,902 (of which \$ 19,272,170 is for Development Projects and \$ 8,371,731 for Administration). Under the Rural Investment and Local Governance Project the World Bank currently reimburses the costs of development projects if these meet the Bank's criteria.

CDB: the Commune Data Base is a national database, compiled by the Ministry of Planning, on the basis of detailed questionnaires, completed at village and commune level, which are then sent to the Departments of Planning for data entry. The most recent round of data collection took place at the end of 2008 (and is reflected in the District Data Books). Commune, District and Provincial Profiles can be generated from this database and should be available from provincial Departments of Planning.

CDPD: the Commune Development and Planning Database is a database maintained by Departments of Planning and Ministry of Planning, recording proposed activities as determined and prioritized by Commune and Sangkat Councils; the Temporary Agreements between these councils and supporting agencies, as decided at District Integration Workshops and details on projects that actually take place at commune, district and provincial levels.

CIP: The Commune Investment Plan is a rolling three-year plan, developed and decided by the Commune or Sangkat Council. It sets priorities and identifies the projects proposed for the years to come.

Commune and Sangkat (C/S): the Communes (in rural areas) and Sangkats (in urban areas) are the lowest and smallest units of local government. Councils are elected directly, once in five years, for the 1417 Communes and 204 Sangkats. In the C/S there are 14,119 villages, which have Village Chiefs, but don't constitute a formal level of local government.

DIP: the District Initiative Project is jointly supported by the MDLF (Multi-Donor Livelihood Facility (supporting the NRM&L Program)) and PSDD. In 2009 it covers 106 districts, 60% of the total in the country, with a budget of \$ 3.2 million. It is focused on capacity development in planning, democratic development, public competitive procurement, financial management and service delivery.

DIS: The District Information System is a national database maintained by NCDD, recording resources, staff, revenue, infrastructure and equipment available in the 193 Districts and Khans throughout the country. The last update took place in July 2009

District, Municipality and Khan constitutes the third level of Government in Cambodia. There are 159 rural Districts, 26 Municipalities and 8 Khans of Phnom Penh Capital. They all have Councils which were, for the first time, elected in May 2009, by the Commune/Sangkat Councilors. These councils have a mandate for 5 years.

DIW: District Integration Workshops are held between July and October, to bring Commune/Sangkat Councils, looking for support for their projects, together with the governmental and non-governmental agencies that may provide support.

ICC: Inter Communes Council projects are executed in 10 provinces under the Democratic and Decentralized Local Governance Project (DDLG). This five year project (2006-2010) is executed by Ministry of Interior and funded by the European Commission and UNDP. The project focuses on improving dialogue partnership and accountability; create a network of Commune Councils at the provincial and national level and support and contribute to local area development for poverty reduction. The work under the ICC component supports investments and services formulated through inter-commune dialogue and planning.

MEDiCAM: A non-profit and non-partisan membership organization for NGOs active in Cambodia's health sector. It is the primary networking agency for health-related NGOs

NCDD: the National Committee for sub-National Democratic Development is the inter-ministerial body charged with the implementation of the Organic Law (a key legislative document, adopted in 2008, outlining the envisaged decentralization). NCDD also channels substantial financial assistance by a number of Development Partners, to projects and programs at various levels. This amounted to over \$ 91 million in 2008. More information at: www.ncdd.gov.kh. This website also provides access to reports, manuals, legal documents, details on projects and more.

OD: the Operational Districts are the districts as defined and used by the Ministry of Health. These do not coincide with the 193 (Administrative) Districts and Khans, as used by all other RGC agencies. The Operational Districts are usually larger, and so there are 77 Operational Districts against 193 administrative Districts and Khans. However they do fit within the boundaries of administrative provinces.

PID: The Project Information Database is the database maintained by NCDD at national and sub national level, to follow all aspects of projects by Commune and Sangkat Councils, including the C/S Fund projects

Provincial Investment Fund (PIF)

The Provincial Investment Fund is allocated to all Provinces and Municipalities according to a population based formula. Part of the fund is earmarked for support to planning activities of the Provincial / Municipal Department of Planning; and to gender mainstreaming activities of the Provincial Department of Women's Affairs. The remaining "un-earmarked PIF" is allocated by PRDC to sectoral technical departments against established criteria and in response to proposals with prioritisation taking into account: priorities formulated by the CS Councils and aggregated by District into District Priority Activities Matrices (DPAM); alignment with national planning and poverty alleviation criteria, complementarity with other planned activities; and performance of the Department concerned in implementation of activities in previous years. With this provisional allocation, the Department then programs activities through the District Integration Process. Finally, the agreed activities, plus support costs amounting to no more than 25% of the total, are included in a sub-contract signed between PRDC and the Department, pursuant to the overall PSDD contract signed between NCDD and PRDC. Total budget has been around \$ 2 million per year.

Province: the 23 Provinces and Phnom Penh Capital City represent the 2nd layer of government. They vary in size, from very small, like Kep (approx. 36,000 people) and Pailin (approx. 70,000 people), or large but with small populations, like Mondulkiri (over 60,000 people), and Ratanakiri (over 153,000) to densely populated and large, like Kampong Cham (over 1.7 million people) and Kandal (approx. 1.4 Million people).

PSDD: the Project to Support Democratic Development through Decentralization and Deconcentration is funded by DFID (UK), SIDA (Sweden) and UNDP and runs from 2006 till the end of 2010 (including a one year extension). Annual budgets range from \$ 11 million to over \$ 18 million. The project provides core technical support to NCDD and to the provinces, financial support to the C/S Fund, District Initiative, Provincial Investment Fund and capacity building support through training, studies and advisory services.

RILGP: The Rural Investment and Local Governance Project is a World Bank funded project that provides substantial support to C/S Fund projects and to developing the required infrastructure, policies, systems and skills. It started in 2003 with a Loan for \$ 22 million for 2003-2007 and was then extended with a Grant of \$ 36 million for the period of 2007-2010. Discussions about a possible RILGP 2 are taking place between RGC and the World Bank.

RPRP: the Rural Poverty Reduction Project is a seven year project from 2004 till 2010, funded by IFAD and UNDP and implemented through the Ministry of Agriculture, Forestry and Fishery, supported by the Ministry of Interior and facilitated by NCDD. The project is active in the provinces Prey Veng and Svay Rieng and focuses on 120,600 households below poverty line. The objective is poverty reduction with the active participation of the poor through improved livelihoods, Strengthened capacity, Sustainable farming systems and natural resource management, new and/or rehabilitated infrastructure development, increase accessibly to technology, services and markets for their economic and social development.

RULIP: the Rural Livelihoods Improvement Project is implemented by the Ministry of Agriculture Forestry and Fisheries (MAFF)' Project Support Unit- PSU, with the NCDD playing the role of cooperating agency. Funded by IFAD and UNDP, the project will run till 2014. The target group consists of poor households who have little or even no land, few livestock or other assets and often many dependents. The main goal of the project is to directly or indirectly improve the livelihood systems, food security and incomes of a total of 33,900 rural poor, ethnic minority and female headed households in targeted village of Kratie, Preah Vihear and Ratanakiri provinces in a sustainable manner.

Seth Koma: The UNICEF funded Seth Koma program focuses on measurable action for children and women. During 2006 -2010 it is implemented in six provinces. Government and UNICEF pursue a set of inter-related goals, addressing critical stages of the life cycle of the child: a) Mothers have safe pregnancies and deliveries and healthy newborns; b) best possible start in life of infant; c) Children enter schools at the right age of six years; d) Children are protected from exploitation, abuse, violence, discrimination and other risks; and e) Youth and adolescents acquire life skills, express their views, participate in the decisions.

Preface

The Government of Cambodia attaches great importance to optimal use of scarce resources and to participatory planning and management at all levels. The Organic Law which was adopted in 2008 provides the legal context for further steps towards improving and decentralizing planning, management and monitoring, and towards greater accountability and transparency of institutions at sub-national levels.

The Government has established elected Councils at the sub-national levels, and we will progressively give them the responsibilities, together with the human and financial resources, to deliver a wide range of public services. They will be more democratic, more efficient, more transparent and accountable, better at addressing gender and other inequalities, and at fighting corruption. We recognize that development does not come from government alone; it needs the involvement of citizens, civil society and the private sector, and the new system will facilitate this.

A central element in this process is the availability of information on any aspect of development to all concerned parties. The newly elected Councillors at District and Khan level, line departments operating at these levels, but also NGOs, Development Partners, Commune Councillors and citizens throughout Cambodia need information on problems and requirements, resources and opportunities, services and agencies, plans and projects. They will need such information to better understand the present situation, set targets for the future, monitor progress, know what others are doing and to apply resources wisely and this is the reason the District Data books will be so valuable.

The District Data Books are a major step towards full transparency and towards informed planning and decision-making. They provide all available data at District, Khan, Commune and Sangkat level in easily accessible formats, in Khmer and English, through over 16,000 printed copies, CD-ROMs and the NCDD website.

This is the first time in Cambodia (and possibly in South East Asia) that such detailed information is made so widely available and NCDD should be commended for the hard work that has gone into this. We also thank the Ministry of Planning, which provided the detailed data of the Commune Data Base, the sectoral ministries and provincial authorities who contributed data and the Development Partners who provided financial support.

It is our sincere hope that the publication of the District Data Books will strengthen capacities, especially at district levels, for evidence-based development planning. We also hope that this information will deepen the understanding among Ministries, Provincial Authorities, Development Partners, NGOs and research agencies of the realities at commune and district levels.

We call upon all to use and distribute this information, complement or correct where appropriate and to contribute new data in the years to come.

Sar KHENG

Deputy Prime Minister, Minister of Interior and Chairman of NCDD

Introduction

Purpose

The purpose of the District Data Books is to bring together information on any aspect of life and development of Districts, Khans, Communes and Sangkat, together and make this widely available. The primary targets are the newly elected District Councilors, district level line departments, provincial agencies, Development Partners and NGOs operating at this level. They need detailed knowledge on current living conditions, natural resources, infrastructure, agriculture and other economic activities, current service levels, past and planned projects and available resources.

While much information exists on many of the above aspects, it is often hard to access that information and much is lost to reports, databases and statistics that are not widely shared. Data are often only available in one language and often out-of-date, and many reports cover only one sector or region.

We found that these problems are especially acute at the district level. Now that Districts are becoming a much more significant level of local government and development planning, there is an urgent need for wide-ranging data to be used for setting base-lines, planning and prioritizing, monitoring and learning.

Approach

We have attempted to identify and compile all available statistics, reports, maps and other data at district and/or commune level. From this we have selected information that is available for all or most districts, reasonably reliable and up-to-date, sufficiently detailed and of possible interest to development planners, decision makers, agencies and citizens.

The major sources of the information in these District Data Books are:

- a) The Commune Data Base information over the years 2006 to 2009 (the most recent data were collected late last 2008), as compiled by the Ministry of Planning
- b) Detailed information directly collected from the Ministry of Health, the Ministry of Education, Youth and Sports and (for maps) the Ministry of Land Management, Urban Planning and Construction
- c) The Project Information Database (PID) at NCDD (up-to-date)
- d) The Commune Development and Planning Database (CDPD) (up to date)
- e) The District Information System (DIS) (updated per Mid 2009)
- f) Direct data collection at provincial and district level on private sector, irrigation, roads, and electricity, through provincial agencies
- g) Medical data collected from MEDiCAM
- h) The ID Poor Project – for poverty data on a number of provinces and districts
- i) NCDD's work on predictive poverty rates
- j) Specific projects for outputs, plans and budgets (Seth Koma, RILGP, RPRP and ICC)

Limitations of the data

We are fully aware that the data we collected are not always complete, consistent or correct. While we have rejected information that was wrong or very incomplete, we decided not to aim for statistical and scientific perfection, but to include information that is useful, relevant

and comprehensive. We also accepted different sources for the same data as this may encourage discussion on the quality of the respective data.

We strongly encourage anyone who notes errors or incompleteness in these data to contact us and to share their data. We hope that the next round of producing such District Data Books can draw on wider sources and more complete data.

We encourage the District Administrations, who receive these data also in digital format, not only to use these for their planning and monitoring, but also to start correcting and updating these data and to share new data with NCDD for future use.

Contents

The information in the following pages is organized in five sections:

- a) **Geographical data:** this section provides maps on infrastructure and administration and on land use and natural resources management. These maps are also provided in large format to all Districts and Khans.
- b) **District Profile:** this presents wide ranging data, covering 2006 – 2009, at district and commune level, extracted from the Commune Data Base, but edited for better understanding.
- c) **Plans and Projects:** this section presents development priorities determined by Commune and Sangkat Councils, Temporary Agreements, outputs and expenditure of major projects at Commune and District level over 2006 – 2008 and plans and budgets for 2009.
- d) **Services and Organizations:** this section provides details on key infrastructure (roads, electricity, irrigation systems) and services in health and education at district and commune level. It also provides an inventory of resources at the District Administration, NGOs operating in the district and private sector agencies active in the district.
- e) **Poverty Data:** this section provides predicted poverty rates for 2009 for all districts and communes and detailed poverty data compiled and processed by the ID Poor project for those that have been covered by this project.

The future

It is our hope that this is the start of a longer-term process. We hope that a next edition of these District Data Books will offer more comprehensive, correct and up-to-date information. We hope that the District Administrations will not only start using this information, but also improve and update it. For this they are all provided with the full data set in digital format.

We invite agencies, projects and experts to send reports, statistics and maps that could be used for a next version to us and we invite all users of the District Data Books to inform us about errors, updates and inconsistencies. Please contact us through info@ncdd.gov.kh

We now invite you to browse through this data book. You may open this randomly or use the table of contents and go to the aspects that have your special interest.

We hope that you will be informed, surprised and assisted. We hope, above all, that this information will lead to a deeper understanding of causes and effects of poverty, to purposeful decisions on how to tackle those causes and to greater transparency in using scarce resources for the benefit of all.

Martin de Graaf
Program Advisor, PSDD/NCD

SECTION A: GEOGRAPHY

1 Administration and Infrastructure

Please see separate folder containing A3 maps.

2 Land Use and Natural Resources

Please see separate folder containing A3 maps

3 Geography

3.1 Land Area

Total Land Area (ha)	Forest Land Area (ha)		Cultivation Land Area (ha)	Construction Land Area (ha)	Other Land Area (ha)
	Total	Flooded Forest Area			
16517	6115	288	8645	697	1060

3.2 Distances between Offices

Location	Distance (Km)
From District Office to C/S Office of Angkaol	3
From District Office to C/S Office of Ou Krasar	11
From District Office to C/S Office of Pong Tuek	400

SECTION B: DISTRICT PROFILE¹

¹ All data in this section come from the Commune Database (CDB) unless otherwise specified. These include primarily new CDB data, collected late 2008, and some data from earlier years. Please note that percentages are rounded to the nearest whole number.

1 General Information

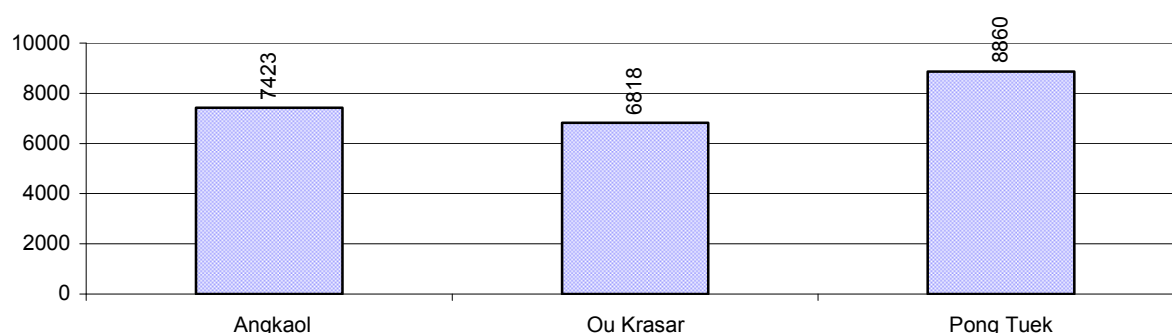
1.1 Population of the District

1.1.1 Total Population

Number of families	2005	2006	2007	2008
Total number of families	4,481 families	4,498 families	4,559 families	4,782 families
Increase (+)/Decrease (-) in nr of families		0%	1%	5%
Total population	23,229 pers	21,779 pers	22,182 pers	23,101 pers
Increase (+)/Decrease (-) in nr of people		-6%	2%	4%
Number of female Headed Households (HH)	1,047 families	1,060 families	1,051 families	860 families

Note: Percentages of population and increase/decrease are calculated on basis of the previous year. A negative sign in front of the percentage indicates a decrease in population.

1.1.2 Population, by Commune, in 2008



1.1.3 Population, by Age Group, over 3 years

Population by age group	2006	2007	2008	
	%	%	%	Number
Age 0-5 years (as percentage of the population)	14%	14%	14%	3,120 persons
Male 0-5 yrs	53%	52%	52%	1,624 persons
Female 0-5 yrs	47%	48%	48%	1,496 persons
Age 6-17 (as percentage of the population)	34%	33%	31%	7,147 persons
Male 6-17 yrs	52%	52%	52%	3,694 persons
Female 6-17 yrs	48%	48%	48%	3,453 persons
Age 18-60 (as percentage of the population)	46%	48%	49%	11,281 persons
Male 18-60 yrs	46%	45%	47%	5,289 persons
Female 18-60 yrs	54%	55%	53%	5,992 persons
Age 61 above (as percentage of the population)	6%	5%	7%	1,553 persons
Male 61	46%	45%	49%	768 persons
Female 61	54%	55%	51%	785 persons

Note: The overall percentage for each age group is calculated on the basis of the total population. The gender distribution of each group is calculated on the basis of the population within that particular age group.

1.2 Occupations

1.2.1 Percentage of families with a particular Occupation over 3 years

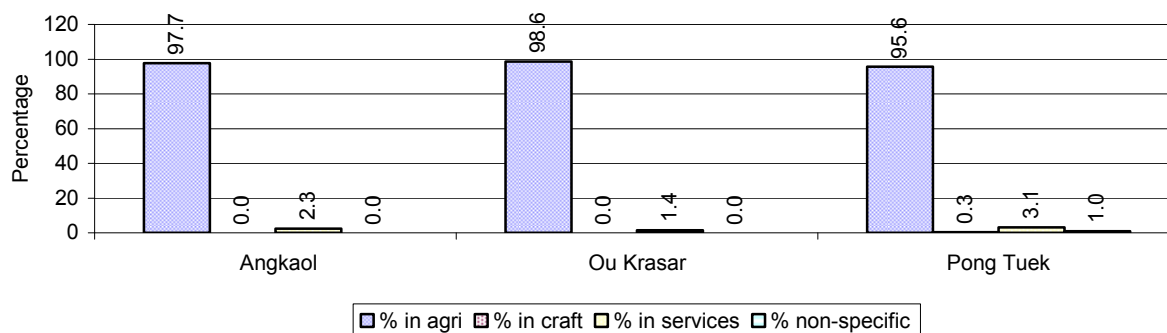
This table shows the percentage of the population who have a particular occupation (job), for example the percentage of the population in the district who are rice farmers, furniture crafter, trader, etc.

Description	2006	2007	2008	
	%	%	%	Number
Families whose main occupation is agriculture	92%	90%	97%	4,644 Families
Families whose primary occupation is rice farming	72%	72%	81%	3,890 Families
Families whose primary occupation is cultivating long-term crops	2%	1%	1%	35 Families
Families whose primary occupation is cultivating short-term crops	7%	9%	6%	288 Families
Families whose primary occupation is cultivating vegetable	3%	2%	2%	90 Families
Families whose primary occupation is fisherman	7%	6%	6%	309 Families
Families whose primary occupation is livestock farmer	0%	0%	0%	22 Families
Families whose primary occupation is NTFP collection	0%	0%	0%	10 Families
Families whose main occupation is craft work	0%	0%	0%	6 Families
Families, whose main occupation is in furniture craft, wooden, rattan, vine, bamboo	0%	0%	0%	0 Families
Families whose main occupation is in metal, aluminum, glass goods production	0%	0%	0%	2 Families
Families whose main occupation is food production	0%	0%	0%	0 Families
Families whose main occupation is tire, plastics and rubber goods production	0%	0%	0%	0 Families
Families whose main occupation is textile, clothing goods production	0%	0%	0%	2 Families
Families whose main occupation is in other production, not listed above	0%	0%	0%	2 Families
Families whose main occupation is services	2%	2%	2%	113 Families
Families whose main occupation is trade	0%	1%	1%	44 Families
Families whose main occupation is repair	1%	1%	1%	28 Families
Families whose main occupation is providing transport services	1%	1%	1%	31 Families
Families whose main occupation is providing other services	0%	0%	0%	10 Families
Families whose main occupation is not clear (or multi)	5%	8%	0%	19 Families

Note: The occupation percentages are calculated on the basis of the total number of families.

1.2.2 Percentage Families that work in one of four occupational sectors, by Commune in 2008

This table indicates the percentage of families involved in one of four occupation types: agriculture, craft, services or non-specific (other). Please note agriculture includes forestry activities such as cutting down trees and gathering gum from the trees.



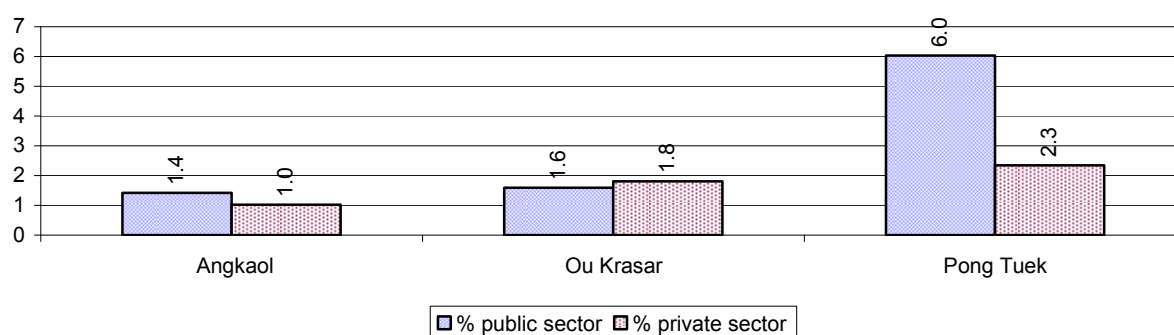
Note: Calculated on the basis of the total number of families within a commune.

1.2.3 Percentage of Families with public Sector, private Sector or uncertain Jobs, over 3 years

Description	2006	2007	2008	
	%	%	%	Number
Families that have a family member who is a government official, staff or worker	5%	5%	3%	159 families
Families that have a family member who is a private sector staff or worker	1%	1%	2%	85 families
Number of people aged 18-60 with uncertain/irregular jobs	17%	14%	12%	1,349 persons

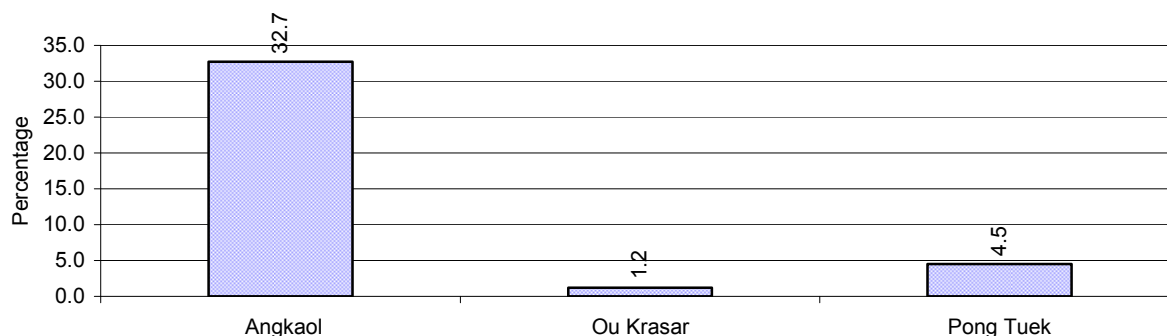
Note: In the first two rows percentages are calculated on the basis of the total number of families. In the third row the percentage is calculated on the basis of the total number of people aged 18-60 years.

1.2.4 Percentage of Families with public or private Sector Jobs, by Commune in 2008



Note: Calculated on the basis of the total number of families in the commune

1.2.5 Percentage of People aged 18-60 years with uncertain/irregular Jobs, by Commune, in 2008.



1.3 Property

1.3.1 Housing types and facilities over 3 years

This table shows the percentage of people living in a certain type of house. It also indicates how many houses have electricity or battery powered lights and how many have TV.

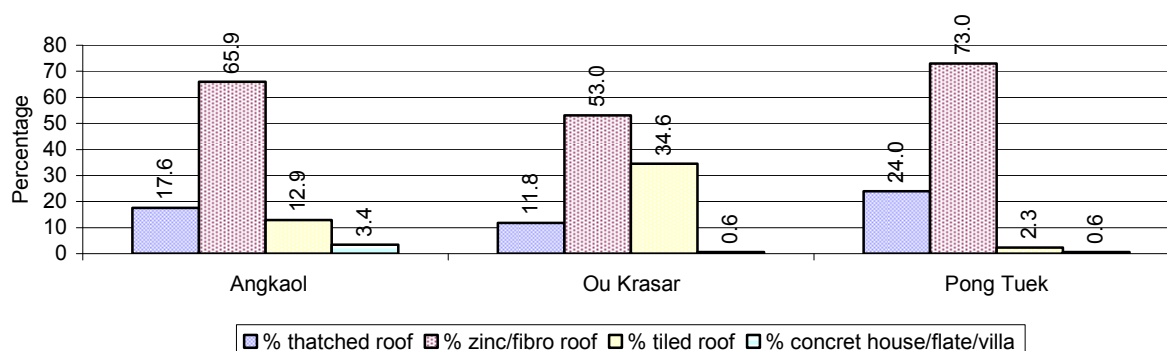
House Type	2006	2007	2008	
	%	%	%	Number
House with thatched roof	39 %	21 %	18 %	800 houses
House with zinc/fibro roof	45 %	60 %	65 %	2,838 houses
House with tiled roof	15 %	15 %	15 %	679 houses
Flats/apartments (with many families living)	0 %	0 %	0 %	21 houses
Concrete house or flat (with one family living)	1 %	1 %	1 %	49 houses
Villa house	0 %	1 %	0 %	0 houses
Houses with electricity	0 %	6 %	9 %	404 houses
Houses with battery light	49 %	43 %	45 %	1,972 houses
Houses with TV	18 %	10 %	23 %	1,015 houses

Note: Calculated against the total number of houses

1.3.2 Families living on public Land or without a permanent House

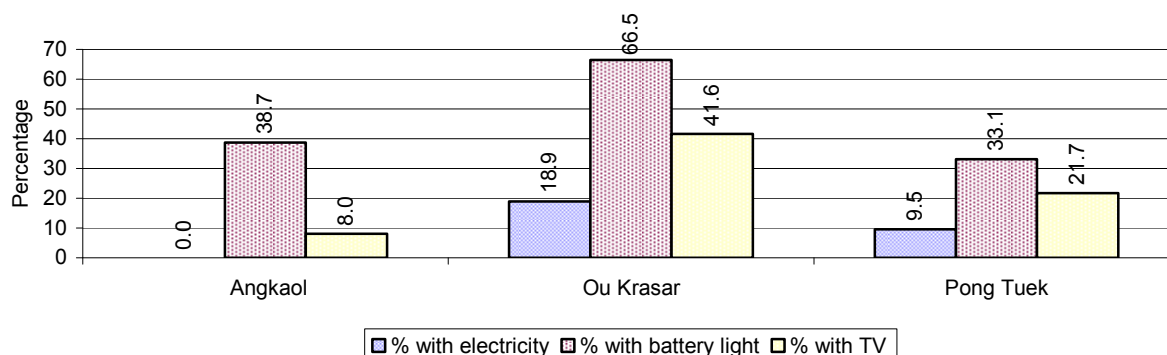
Living situation	2006	2007	2008
Families living in a house on public land	9 families	12 families	17 families
People, without permanent housing	5 person(s)	1 person(s)	3 person(s)

1.3.3 Percentage of Population living in a particular type of House, by Commune, in 2008



Note: Calculated against the total number of houses in each commune

1.3.4 Percentage of Houses with Electricity, Battery Lights and/or TVs, by Commune, in 2008



Note: Calculated against the total number of houses in each commune

1.3.5 Types of Vehicles and their ratio to Families across 3 years

This table shows the number of families per vehicle in the district. The last column shows the total number of each type of vehicle in the district for 2008.

Description	2006 ratio	2007 ratio	2008	
			Ratio	Number
Bicycle and bicycle with trailer	1	1	1	3,866
Ox-carts and horse-carts	2	3	3	1,765
Motorbike/with trailer	4	4	3	1,477
Motor tri-cycle	2,249	1,140	956	5
Large Transportation				
Total number of cars/trucks	237	127	80	60
Locally made vehicles	1,125	912	598	8
Trucks for goods transport	1,499	380	154	31
Buses/mini buses for passengers	4,498	1,140	956	5
Family cars	409	304	299	16
Agriculture machinery				
Tractors used for plowing	1,499	1,520	1,594	3
Power-tillage used for plowing	196	147	137	35
Other type of machinery				
Other type of machinery	N/A	N/A	N/A	0
Water transportation				
Row boats	17	15	13	372
Total number of motor boats	19	21	21	230
Motor boats used for fishing	19	21	21	229
Motor boats used for passengers	N/A	N/A	N/A	0
Motor boats used for goods transporting	N/A	N/A	4,782	1

Note: Ratio of families to a particular type of vehicle is the result of the total number of families divided by total number of that type of vehicle. Other types of vehicles, such as bulldozer, excavator, rollers etc. are not listed.

2 Infrastructure and Economy

2.1 Roads in meters over 3 years

Description	2006	2007	2008
Bituminous road	0 m	0 m	0 m
DBST, Macadam road	9,500 m	9,500 m	9,500 m
Concrete road	0 m	30 m	0 m
Laterite road	10,200 m	12,900 m	21,770 m
Constructed earth road	6,330 m	7,633 m	23,600 m
Un-constructed earth road	20,000 m	20,800 m	25,500 m

2.2 Sewerage Pipes in meters over 3 years

Description	Sewage pipe length		
	2006	2007	2008
Total length of sewage pipe, diameter 30-50 cm	0 m	0 m	18 m
Length of newly constructed sewage pipe, diameter 30-50 cm	0 m	0 m	0 m
Length of sewage pipe, diameter 30-50 cm needs repair/rehabilitation	0 m	0 m	4 m
Total length of sewage pipe, diameter of pipe 60-100 cm	53 m	53 m	53 m
Length of newly constructed sewage pipe, diameter 60-100 cm	0 m	0 m	0 m
Length of sewage pipe, diameter 60-100 cm needs repair/rehabilitation	0 m	0 m	0 m
Sewage pipe, diameter of pipe over 100 cm	30 m	0 m	30 m
Length of newly constructed sewage pipe, diameter over 100 cm	0 m	0 m	0 m
Length of sewage pipe, diameter over 100 cm needs repair/rehabilitation	0 m	0 m	0 m

2.3 Drainage and Bridges

Construction Type	2006		2007		2008	
	place(s)	Length	place(s)	Length	place(s)	Length
Single pipe culvert	26	44m	28	40 m	28	53 m
Double-pipe culvert	9	34m	11	28 m	11	68 m
Box pipe culvert	3	11m	3	11m	3	11 m
Wooden bridge	1	15m	1	8m	1	8 m
Concrete bridge	12	63m	12	65m	12	65 m
Bale bridge	0	0m	0	0m	0	0 m
Spillway construction	9	27m	9	27m	9	27 m

2.4 Services in the District

Descriptions	Number of places by year		
	2006	2007	2008
Public			
Electricity generating stations	0	0	0
Health clinics	0	0	4
Private			
Bicycle and motorcycle repair places	26	25	23
Agricultural machinery, tools and equipment repair places	0	0	3
Electronic tool repair places	1	1	4
Battery-charging services	20	127	15
Handicraft places, wooden furniture and forest by-products	0	0	2
Other handicraft places (excluding furniture)	2	2	3
Small-scale services (hairstylist, phone service, massage,	15	15	15

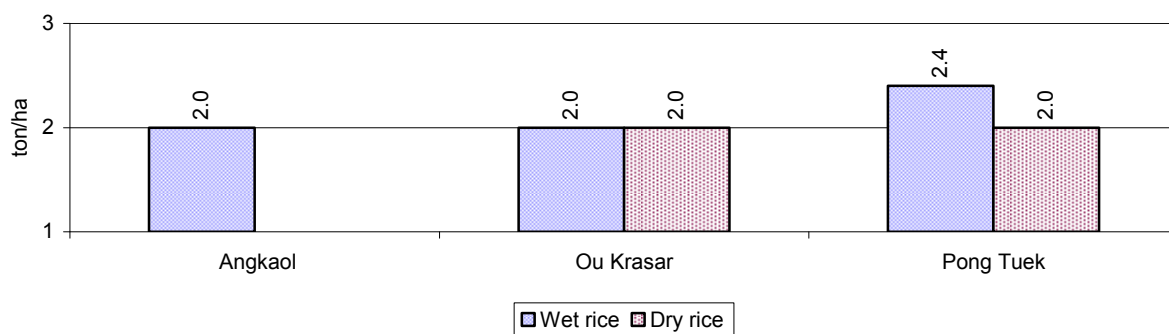
Descriptions	Number of places by year		
	2006	2007	2008
Karaoke, etc)			
Small-scale food shop businesses (Food, groceries, drink shop, etc)	10	10	27
Small-scale rice mills	79	72	70
Medium or large-scale rice mills	0	0	0
Small-scale markets	3	3	3
Large-scale market	0	0	0
Alcohol refinery places	29	23	10
Pharmacies and small drug stores	1	1	6
Hotels	0	0	0
Guest houses	0	0	0
Restaurants	0	0	0
Gasoline stations	0	0	0

2.5 Agriculture

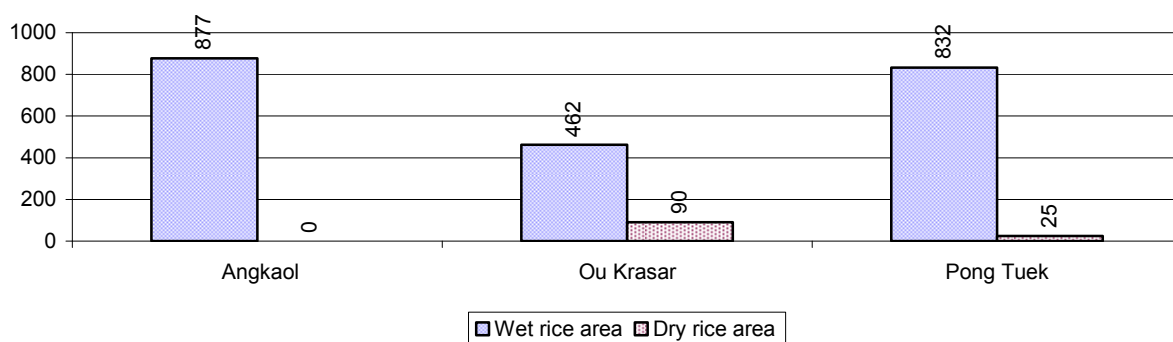
2.5.1 Rice cultivation in the District over 3 years

Description	2006	2007	2008
Total dry rice land area	121 ha	115 ha	115 ha
Actual dry rice cultivation area	115 ha	115 ha	115 ha
% actual cultivation to total land	95%	100%	100%
Total dry rice production	168 tonne(s)	201 tonne(s)	230 tonne(s)
Average dry rice yield	1.5 tonne(s)/ha	1.8 tonne(s)/ha	2.0 tonne(s)/ha
Total wet rice land area	2,298 ha	2,298 ha	2,171 ha
Actual wet rice cultivation area	2,298 ha	2,298 ha	2,171 ha
% actual cultivation to total land	100 %	100%	100%
Total wet rice production	3,293.80 tonne(s)	3,447.00 tonne(s)	4,632.17 tonne(s)
Average wet rice yield	1.4 tonne(s)/ha	1.5 tonne(s)/ha	2.1 tonne(s)/ha
Total intensive rice land area	76 ha	75 ha	80 ha
Actual intensive rice cultivation area	114 ha	- ha	141 ha
Average intensive rice yield	1.3 tonne(s)/ha	- tonne(s)/ha	1.9 tonne(s)/ha
Actual upland rice cultivation area	178 ha	178 ha	178 ha
Total upland rice production	267 tonne(s)	267 tonne(s)	356 tonne(s)
Average upland rice yield	1.5 tonne(s)/ha	1.5 tonne(s)/ha	2.0 tonne(s)/ha

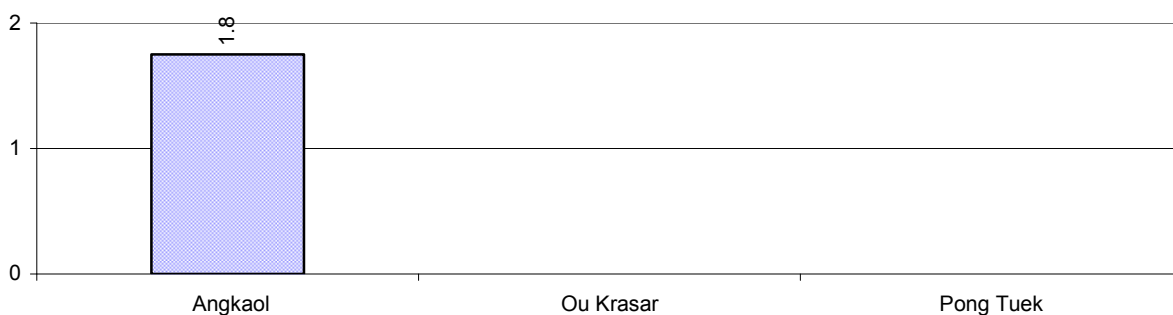
2.5.2 Estimated wet and dry Season Rice Yield in tonne(s)/Ha, by Commune, in 2008



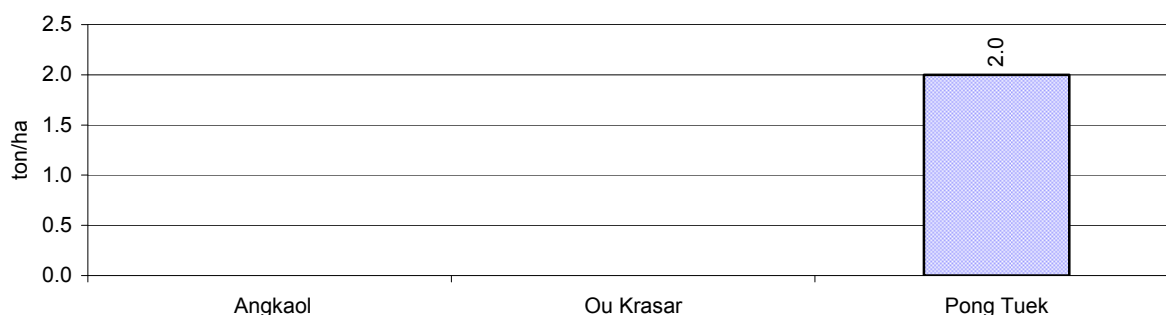
2.5.3 Cultivated wet and dry Season Rice areas in Ha, by Commune, in 2008



2.5.4 Estimated intensive Rice Yields in tonnes/Ha, by Commune, for 2008



2.5.5 Estimated upland Rice Yield in tonnes/Ha, by Commune, for 2008

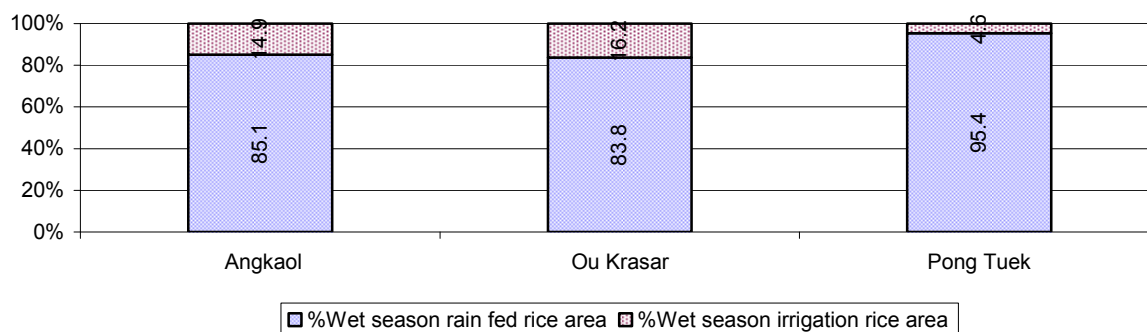


2.5.6 Wet season Rice irrigation across 3 years

Description		2006	2007	2008	
		%	%	%	Number
Total area of wet season rain fed rice land		81%	84%	89 %	1,928 ha
Percentage of wet season rice land that is irrigated; and for 2008 area in Ha		19 %	16 %	11 %	243 ha
Where	Area irrigated from canal/dam	100 %	100 %	100 %	243 ha
	Area irrigated from river, stream, lake, natural pond	0 %	0 %	0 %	0 ha
	Area irrigated from drilled well	0 %	0 %	0 %	0 ha
	Area irrigated from dug pond	0 %	0 %	0 %	0 ha

2.5.7 Water sources for wet Season Rice Cultivation, by Commune, in 2008

This chart shows the percentage of wet season rice cultivation receiving water from rain (natural) and from irrigation.



2.5.8 Access to Irrigation

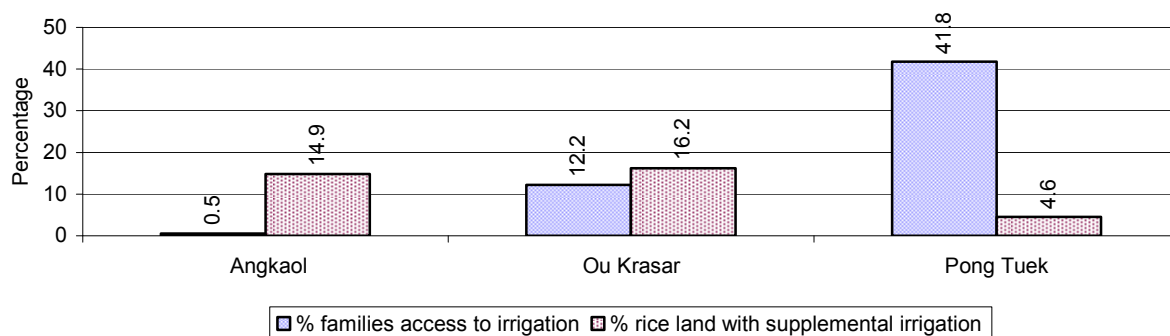
Description	2006	2007	2008	
	%	%	%	Number
Families who have access to irrigation water	21%	20%	21%	831 families
Families who have irrigation wells	2%	2%	2%	72 families

Note: Calculated against the total number of families are rice farmers

2.5.9 Number of Irrigation Wells over 3 years

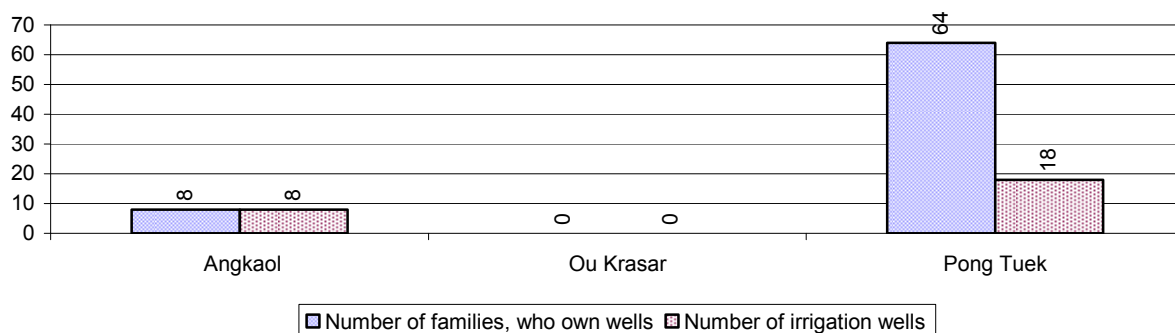
Description	2006	2007	2008
Number of irrigation wells	23 wells	26 wells	26 wells

2.5.10 Percentage of Families with access to (supplemental) Irrigation for wet Season Rice cultivation, by Commune, in 2008



Note: % of families, with access to irrigation is calculated against the total number of families, whose main occupation is rice farming. Irrigated wet rice land area is calculated against the total actual wet rice land cultivated areas

2.5.11 Irrigation Wells, by Commune, in 2008

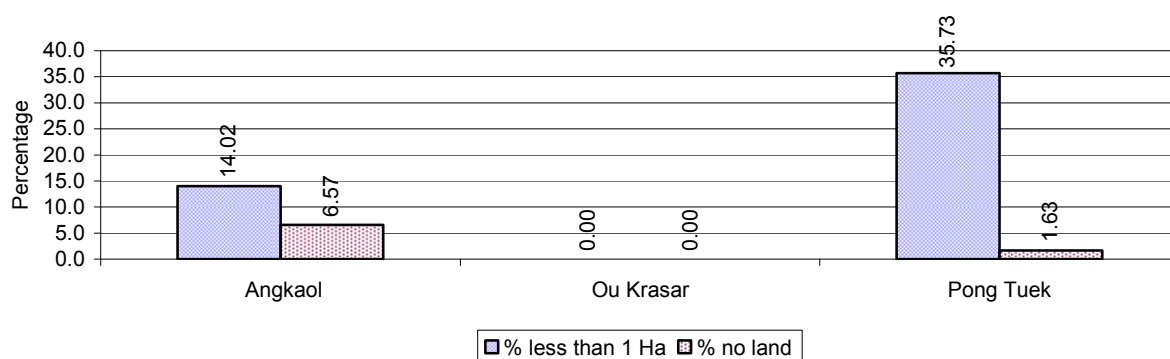


2.5.12 Farmers owning less than one hectare of Rice Land

Description	2006	2007	2008	
	%	%	%	Number
Families who have less than one hectare of rice land	69%	47%	19%	752 families
Families who do not own any rice land	3%	2%	3%	102 families

Note: Calculated on basis of total number of families who are rice farming

2.5.13 Percentage of Farmers with less than one Hectare or no Rice Land, by Commune, in 2008

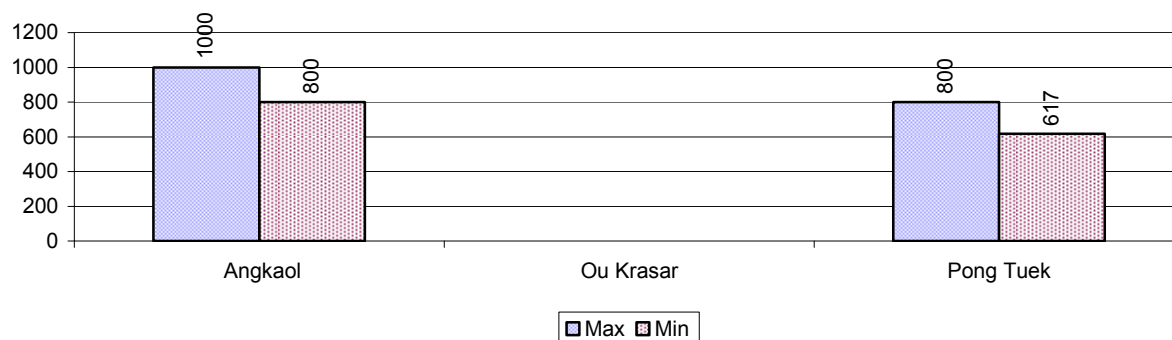


Note: Calculated on basis of total number of families who are rice farming

2.5.14 Average farm-gate Prices of Rice, over 3 years

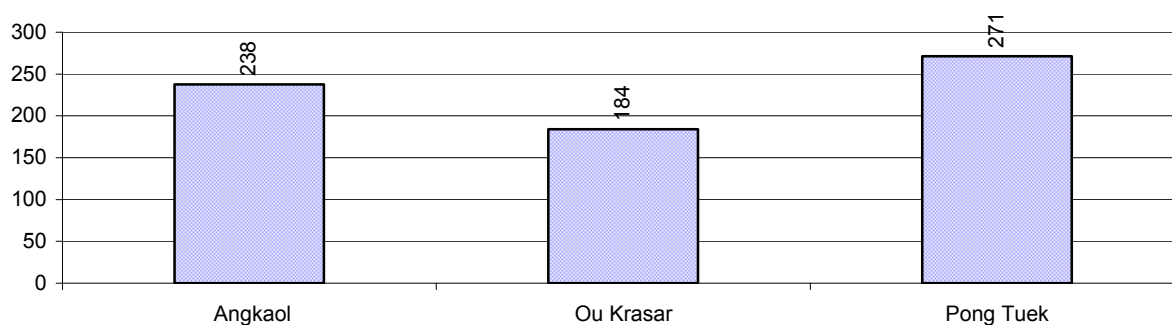
Description	2006	2007	2008
Maximum average farm gate price	658 Riels/Kg	787 Riels/Kg	900 Riels/Kg
Minimum average farm gate price	504 Riels/Kg	670 Riels/Kg	708 Riels/Kg
Average farm gate price	581 Riels/Kg	728 Riels/Kg	804 Riels/Kg
Average rice production per person	176 Kg/person	183 Kg/person	232 Kg/person

2.5.15 Minimum and maximum farm-gate Prices of Rice in Riel/kg, by Commune, in 2008



2.5.16 Production of Paddy in Kgs/Person, by Commune, in 2008

This table shows how much paddy (harvested rice) is produced in a year in a commune, in kgs per person.

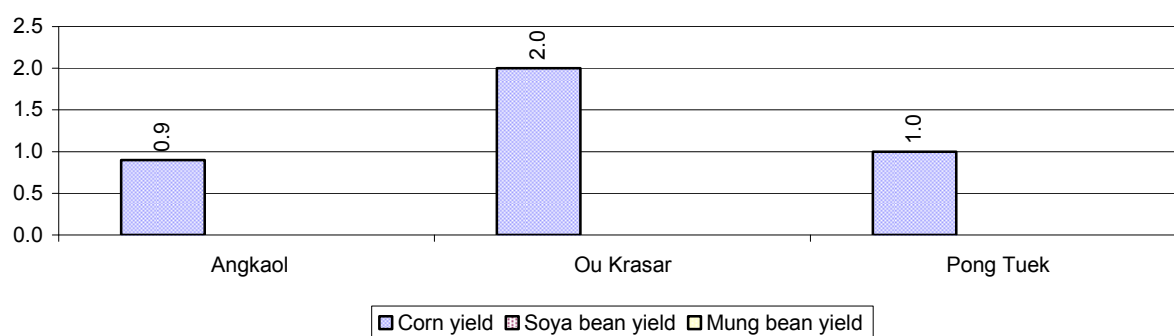


2.5.17 Production of other Crops, over 3 years

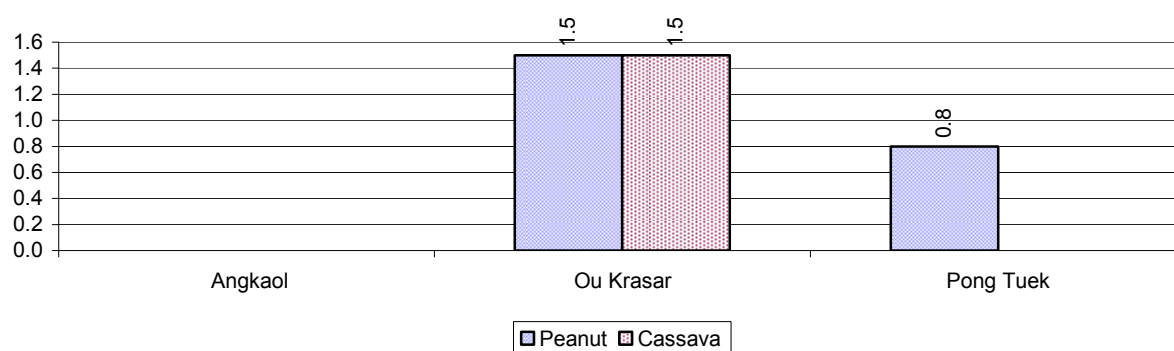
Crops	2006	2007	2008
Corn cultivation area	19 ha	19 ha	44 ha
Estimated corn yield	0.9 tonne(s)/ha	1.3 tonne(s)/ha	1.3 tonne(s)/ha
Estimated corn production	17 tonne(s)	24 tonne(s)	57 tonne(s)
Soya bean cultivation area	0 ha	0 ha	0 ha
Estimated Soya bean yield	- tonne(s)/ha	- tonne(s)/ha	- tonne(s)/ha
Estimated Soya bean production	- tonne(s)	- tonne(s)	- tonne(s)
Mungbean cultivation area	0 ha	0 ha	0 ha
Estimated Mungbean yield	- tonne(s)/ha	- tonne(s)/ha	- tonne(s)/ha
Estimated Mungbean production	- tonne(s)	- tonne(s)	- tonne(s)

Crops	2006	2007	2008
Peanut cultivation area	8 ha	6 ha	7 ha
Estimated Peanut yield	0.9 tonne(s)/ha	1.2 tonne(s)/ha	1.2 tonne(s)/ha
Estimated Peanut production	7 tonne(s)	7 tonne(s)	8 tonne(s)
Cassava cultivation area	3 ha	3 ha	1 ha
Estimated Cassava yield	1.6 tonne(s)/ha	1.5 tonne(s)/ha	1.5 tonne(s)/ha
Estimated Cassava production	5 tonne(s)	4 tonne(s)	2 tonne(s)
Sweet potatoes cultivation area	47 ha	48 ha	55 ha
Estimated Sweet potatoes yield	2.3 tonne(s)/ha	2.3 tonne(s)/ha	2.3 tonne(s)/ha
Estimated Sweet potatoes production	107 tonne(s)	112 tonne(s)	127 tonne(s)
Sesame cultivation area	0 ha	0 ha	0 ha
Estimated Sesame yield	- tonne(s)/ha	- tonne(s)/ha	- tonne(s)/ha
Estimated Sesame production	- tonne(s)	- tonne(s)	- tonne(s)

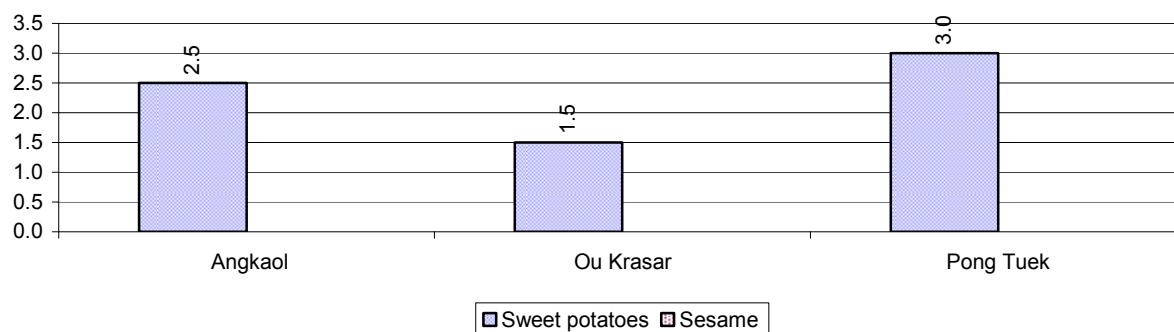
2.5.18 Yields of Corn, Soya beans and Mungbeans in tonne(s)/ha, by Commune, in 2008



2.5.19 Yields of Peanuts and Cassava in tonne(s)/ha by Commune, in 2008



2.5.20 Yields of Sweet Potatoes and Sesame in tonne(s)/ha, by Commune, in 2008



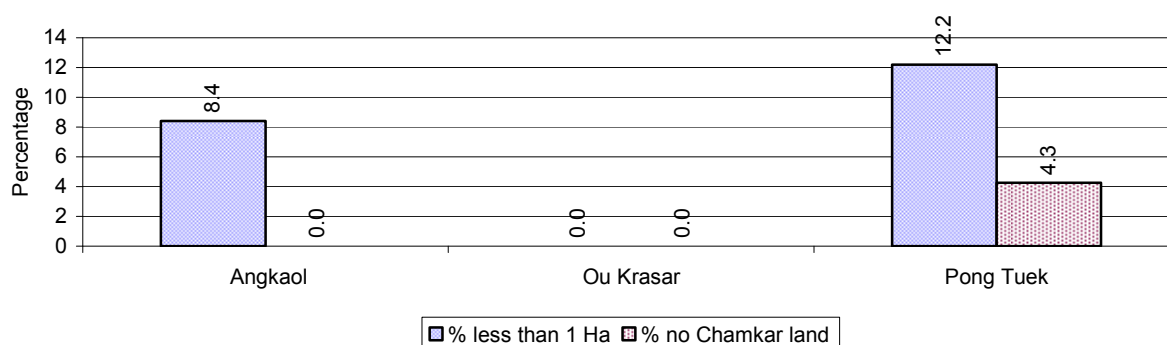
2.5.21 Percentage Farmers who own less than 1 Ha or no Chamkar land

Description	2006	2007	2008	
	%	%	%	Number
Families, who own less than 1ha of Chamkar land	67%	47%	7%	29 families
Families, with no Chamkar land	5%	7%	2%	7 families

Note 1: Calculated as a percentage of the total number of families whose main occupation is Chamkar (not rice) farming

Note 2: Chamkar land is no-rice land, i.e. other crops

2.5.22 Percentage Farmers owning less than 1 ha or no Chamkar land, by Commune, in 2008



Note: Percentage is calculated among families, who Chamkar farm as a main occupation, not the total population of the commune.

2.5.23 Percentage of Families raising Cattle/Buffalo, over 3 years

Description	2006	2007	2008	
	%	%	%	Number
Families raising cattle/buffalo	89%	90%	84%	4,029 families
Families raising cattle/buffalo as labor forces	80%	77%	71%	3,409 families

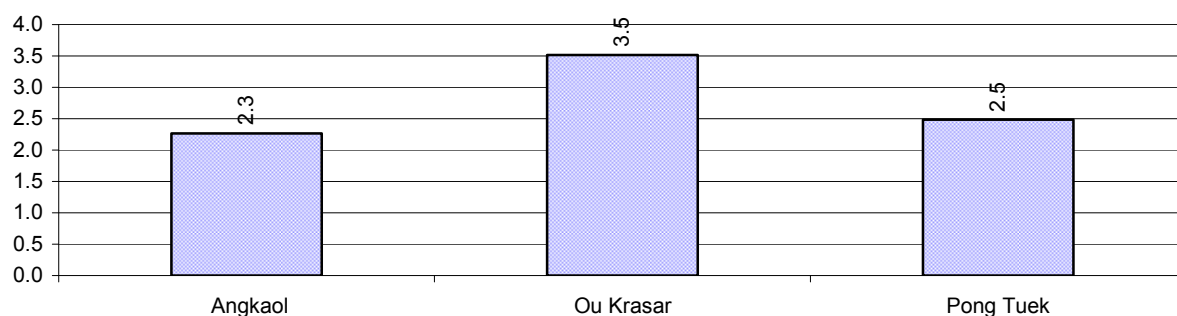
Note: Calculated against the total number of families.

2.5.24 Number of Cattle/buffalo being raised, over 3 years

Description	2006	2007	2008
Total number of cattle/buffalo	9,277 head(s)	11,015 head(s)	11,113 head(s)
Average cattle/buffalo per families	2.3 head(s)/families	2.7 head(s)/families	3 head(s)/families

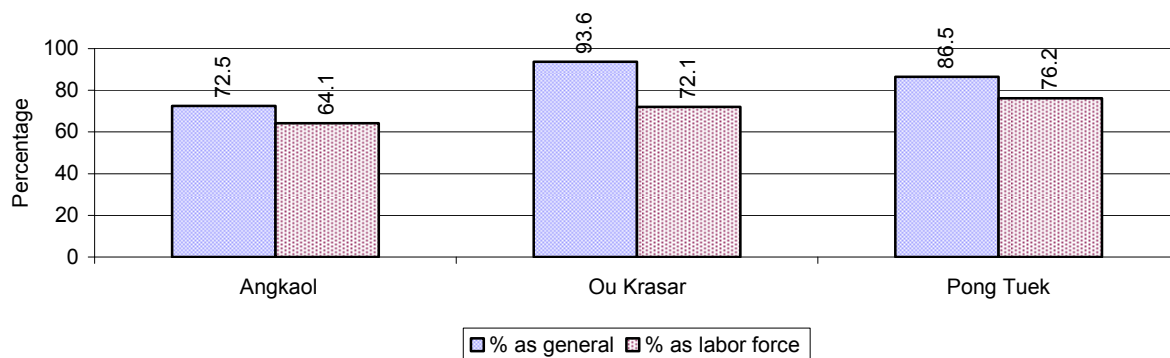
Note: Calculated by dividing total number of cattle/buffalo by total number of cattle/buffalo raising families

2.5.25 Average number of Cattle/Buffalo per Family, by Commune, in 2008



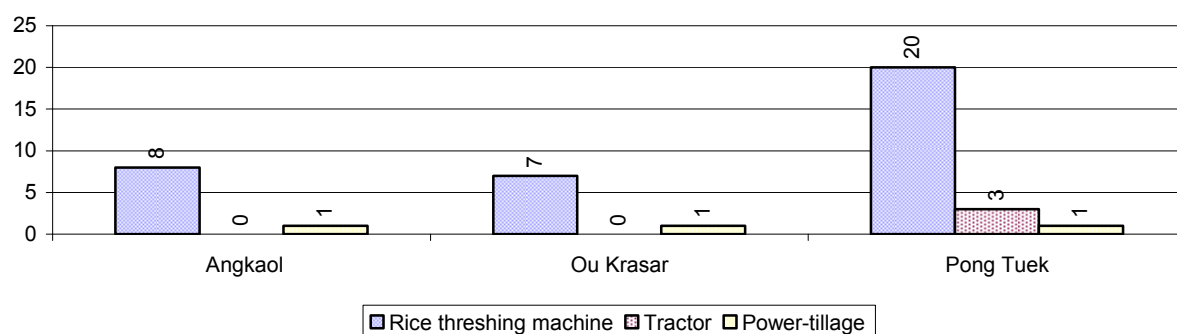
Note: Calculated by dividing total number of cattle/buffalo by total number of cattle/buffalo raising families

2.5.26 Percentage Families raising Cattle/Buffalo, for general and labor purposes in 2008, by Commune



Note: Calculated using the total number of families raising cattle/buffalo against the total number of families.

2.5.27 Type and number of agricultural Machines, by Commune, in 2008

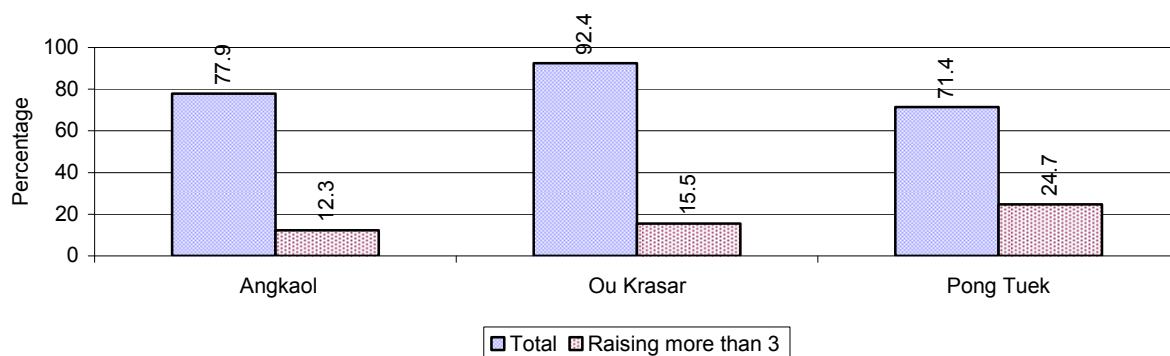


2.5.28 Livestock-producing Households over 3 years

Description	2006 %	2007 %	2008	
			%	Number
Total number of families raising pigs	89%	90%	80%	3,802 families
number of families raising more than 3 pigs	18%	16%	18%	871 families
Total number of families raising chickens	96%	95%	92%	4,391 families
number of families raising more than 3 chickens	66%	78%	80%	3,842 families
Total number of families raising ducks	29%	18%	16%	766 families
number of families raising more than 5 ducks	21%	14%	13%	605 families
Total number of families raising goats or sheep	0%	0%	0%	9 families
Total number of families raising horses	0%	0%	0%	10 families

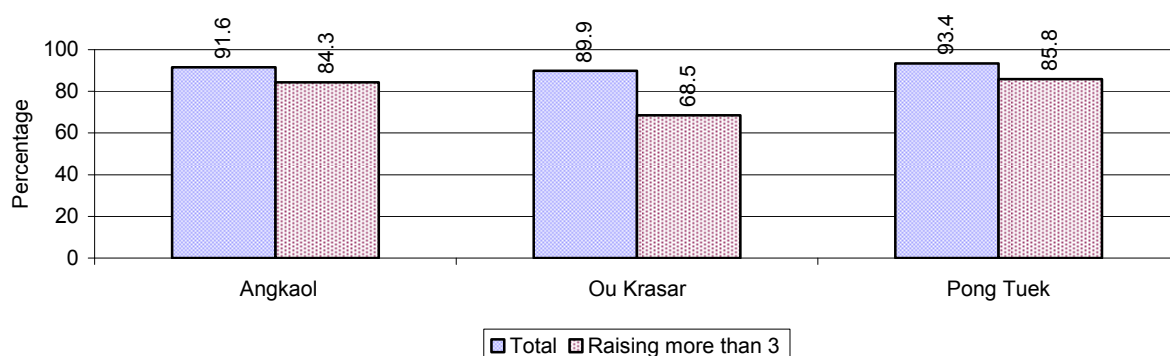
Note: Calculated against the total number of families

2.5.29 Percentage Families raising Pigs, by Commune, in 2008



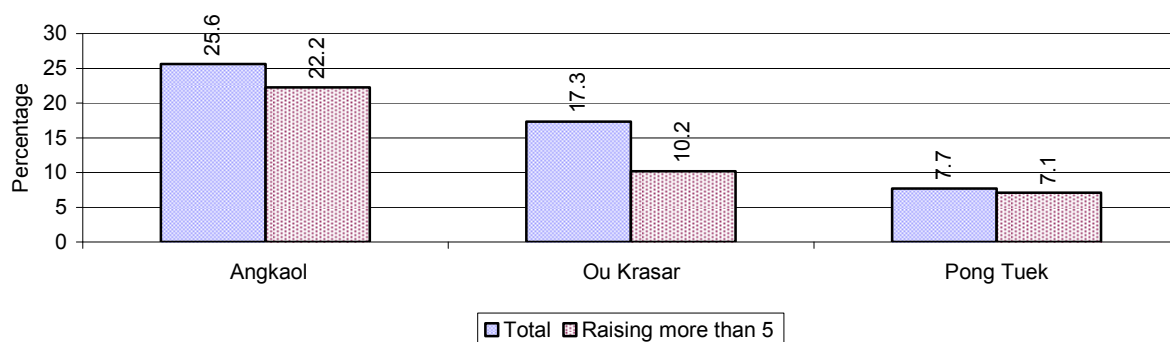
Note: Calculated against the total number of families in the commune

2.5.30 Percentage Families raising Chickens, by Commune, in 2008



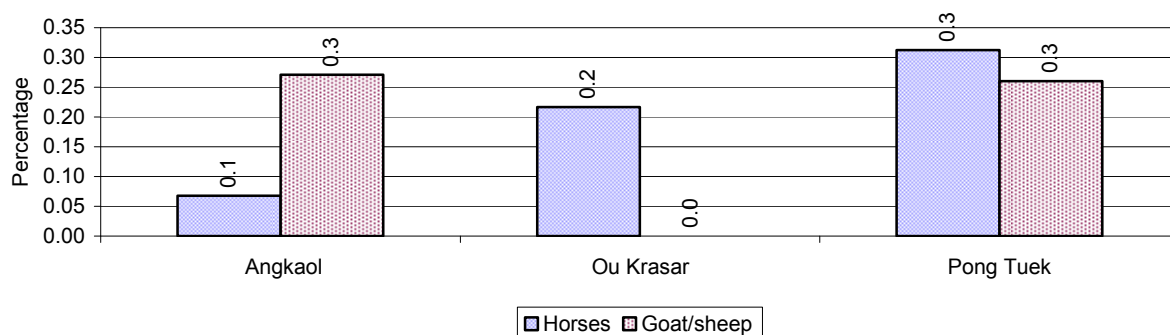
Note: Calculated against the total number of families in the commune

2.5.31 Percentage Families raising Ducks, by Commune, in 2008



Note: Calculated against the total number of families in the commune

2.5.32 Percentage Families raising Horses, Goats or Sheep, by Commune, in 2008

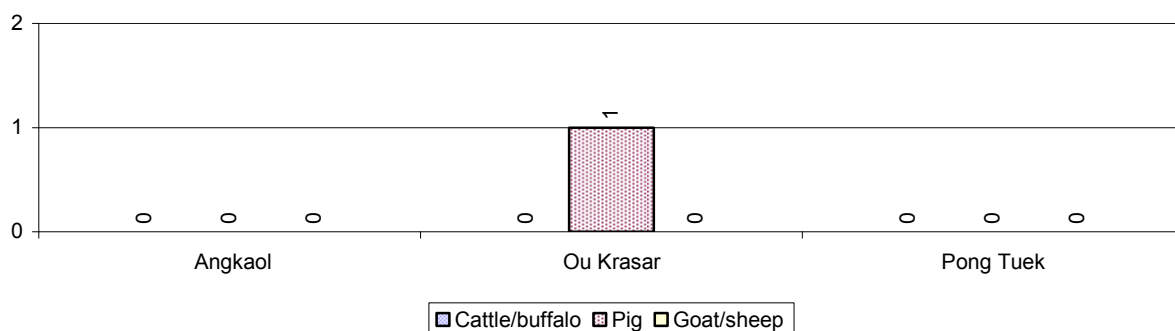


Note: Calculated against the total number of families in the commune

2.5.33 Livestock Farms over 3 years

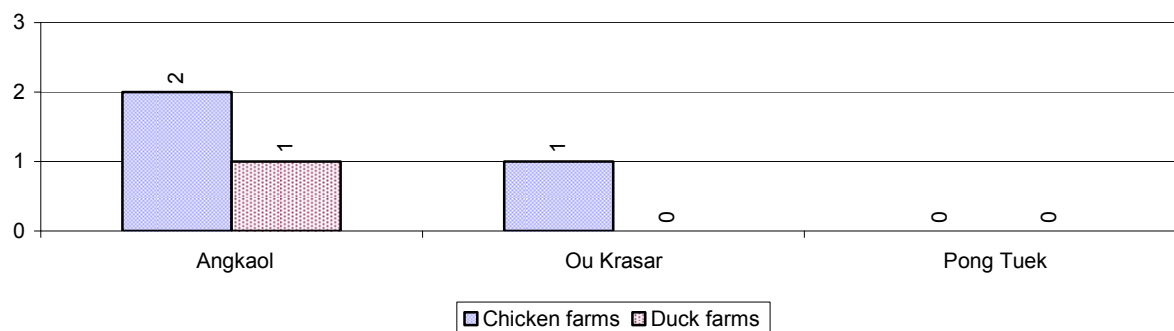
Description	2006	2007	2008
Number of cattle/buffalo farms	0 farm(s)	0 farm(s)	0 farm(s)
Number of pig farms	2 farm(s)	1 farm(s)	1 farm(s)
Number of goat/sheep farms	0 farm(s)	0 farm(s)	0 farm(s)
Number of chicken farms	0 farm(s)	0 farm(s)	3 farm(s)
Number of duck farms	0 farm(s)	0 farm(s)	1 farm(s)

2.5.34 Number Livestock Farms, by Commune in 2008



Note: Number of farms are recorded by the village chief, not by counting number of livestock in each farm

2.5.35 Number Chicken and Duck Farms, by Commune, for 2008



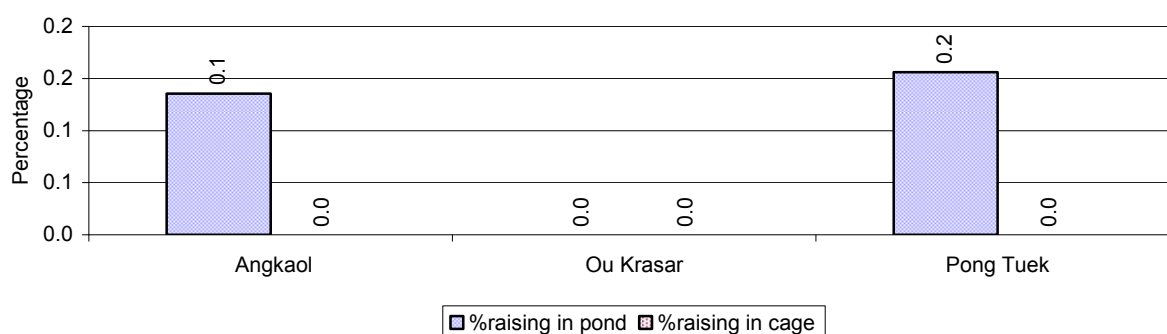
Note: Number of farm places recorded by village chief, not by counting number of livestock in each farm

2.5.36 Families raising Fish over 3 years

Description	2006	2007	2008
Total number of families raising fish	7 families	8 families	5 families
% families raising fish	0%	0%	0%
Number families raising fish in pond	7 families	8 families	5 families
% families raising fish in pond	0%	0 %	0%
Number fish pond	7 pond(s)	8 pond(s)	5 pond(s)
No. of ponds per family	1.0 pond/families	1.0 pond/families	1.0 pond/families
Number of families raising fish in cage	0 families	0 families	0 families
%families raising fish in cage	0 %	0 %	0%
Number of fish cage	0 cage(s)	0 cage(s)	0 cage(s)
No. of fish cage per family	- cage /families	- cage /families	- cage /families

Note: % of families raising fish or fish in ponds or cages is calculated as a percentage of the total number of families.

2.5.37 Percentage of Families raising Fish, by Commune, in 2008



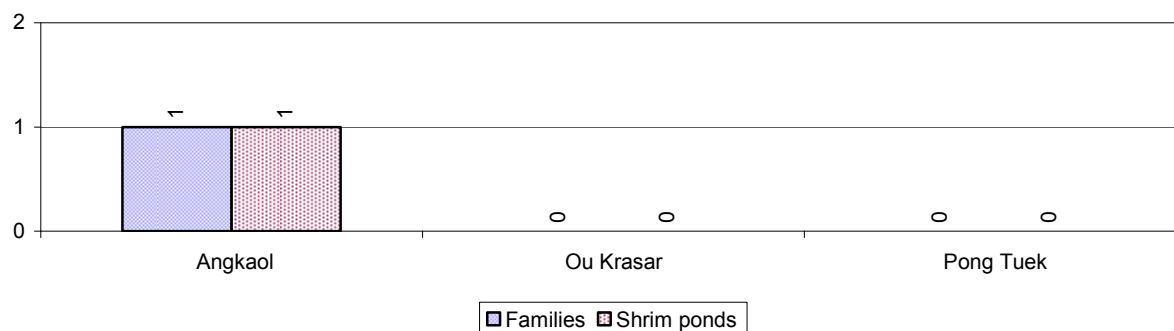
Note: Calculated as a percentage of the total number of families in the commune.

2.5.38 Shrimp and Prawn Farming over 3 years

Description	2006	2007	2008
Number of families raising shrimps	1 families	1 families	1 families
% Families raising shrimps	0%	0%	0%
Number of shrimp ponds	1 pond	1 pond	1 pond
Total area raising shrimps	2 ha	1 ha	1 ha
Area per family	2ha/families	1ha/families	1ha/families
Number of families raising prawns	0 families	0 families	0 families
% families raising prawns	0%	0%	0%
Number prawn ponds	0 pond	0 pond	0 pond
Ponds per families	- pond/families	-pond/families	-pond/families
Number of prawn cages	0 cage	0 cage	0 cage
Cages per families	0 cage /families	0 cage /families	0 cage /families

Note: Percentage of families raising either prawns or shrimp is calculated against the number of families, who do aquaculture farming, NOT the total population.

2.5.39 Numbers of Families raising Shrimps and number of Shrimp Ponds, by Commune, in 2008



2.5.40 Number of Families raising Prawn and Number of Prawn Ponds/Cages, by Commune, in 2008

There were none of these in this District in 2008

3 Social Aspects

3.1 Education

3.1.1 Kindergarten in the District over 3 years

Description	2006	2007	2008
Number of community kindergarten schools	0 school(s)	3 school(s)	3 school(s)
Number of community kindergarten class rooms	0 room(s)	3 room(s)	3 room(s)
Number of community kindergarten classes	0 class(es)	5 class(es)	5 class(es)
Number of community kindergarten teachers	0 person(s)	0 person(s)	4 person(s)
Number of women community kindergarten teachers	0 women	0 women	3 women
Number of state and private kindergarten schools	4 school(s)	4 school(s)	5 school(s)
Number of state and private kindergarten class rooms	6 room(s)	6 room(s)	7 room(s)
Number of state and private kindergarten classes	6 class(es)	6 class(es)	7 class(es)
Number of state and private kindergarten teachers	5 person(s)	5 person(s)	7 person(s)
Number of women state and private kindergarten teachers	3 women	4 women	6 women

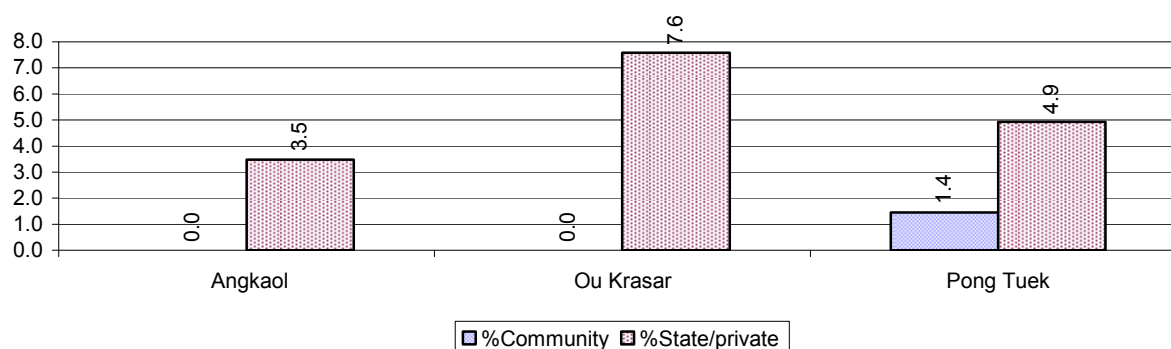
3.1.2 Percentage enrolment at Kindergarten level over 3 years

This table shows the percentage of the total 3-5 year old population attending kindergarten.

Description	2006 %	2007 %	2008	
			%	Number
Total percentage of children, 3-5 yrs, go to kindergarten	8%	4%	6%	106 person(s)
Percentage of children, 3-5 yrs, go community kindergarten	1%	0%	1%	10 person(s)
Percentage children, 3-5 yrs, go state/private kindergarten	7%	4%	5%	96 person(s)

Note: Calculated against the total for that age group

3.1.3 Percentage of Children 3-5 yrs attending Kindergarten, by Commune, in 2008



3.1.4 Basic Education over 3 years

Primary School

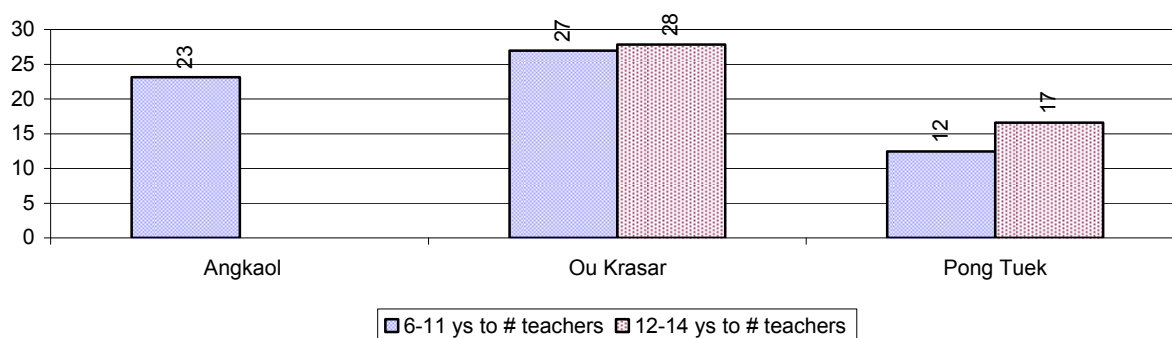
Description	2006	2007	2008
Number of primary schools	17 school(s)	18 school(s)	21 school(s)
Number of primary school rooms	93 room(s)	87 room(s)	110 room(s)
Number of primary classes	127 class(es)	117 class(es)	135 class(es)
Number of primary teachers	126 person(s)	122 person(s)	189 person(s)
Ratio of children 6-11 yrs to school	209	195	164
Ratio of children 6-11 yrs to school room	38	40	31
Ratio of children 6-11 yrs to class	28	30	26
Ratio of children 6-11 yrs to teacher	28	29	18

Note: According to education norm, children 6-11 yrs should attend primary school, while 12-14 yrs should be in lower secondary school, but in reality this varies.

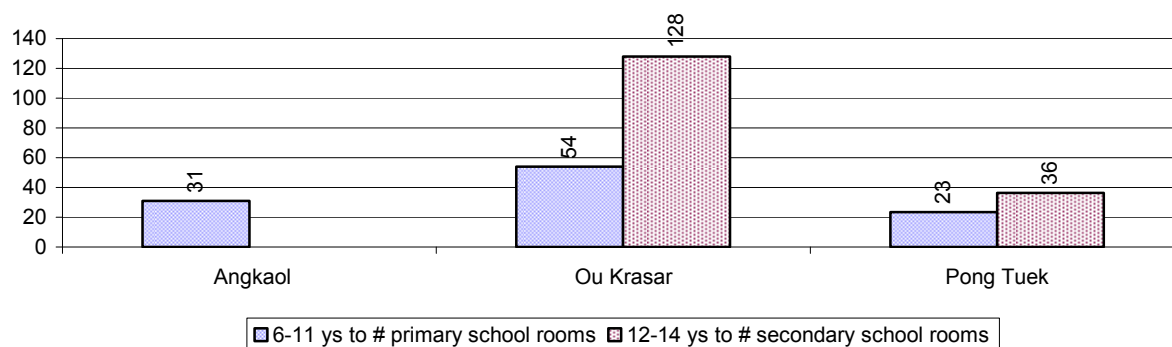
Lower Secondary School

Description	2006	2007	2008
Number of lower secondary schools	1 school(s)	2 school(s)	2 school(s)
Number of lower secondary school rooms	5 room(s)	21 room(s)	21 room(s)
Number of lower secondary classes	14 class(es)	16 class(es)	17 class(es)
Number of lower secondary teachers	28 person(s)	44 person(s)	58 person(s)
Ratio children 12-14 yrs to school	1,938	950	937
Ratio of children 12-14 yrs to school room	388	90	89
Ratio of children 12-14 yrs to class	138	119	110
Ratio of children 12-14 yrs to teacher	69	43	32

3.1.5 Ratio of 6-11 year old and 12-14 year old Children to number of Teachers, by Commune, in 2008



3.1.6 Ratio of 6-11 year old and 12-14 year old Children to number of School Rooms, by Commune, in 2008



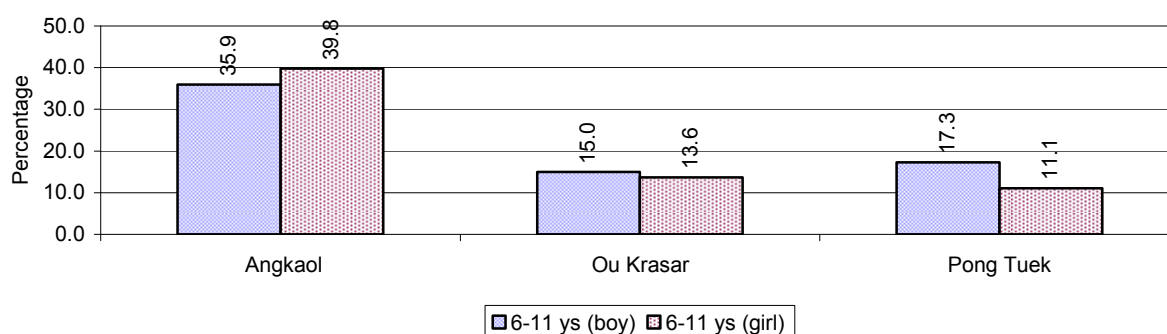
3.1.7 Enrolment status at Primary Level over 3 years

Description	2006 %	2007 %	2008	
			%	Number
Total children aged 6-11 years old	16%	16%	15%	3,448 person(s)
Total children aged 6-11 who are in school	78%	72%	78%	2,679 person(s)
Total children aged 6-11 who are not in school	22%	28%	22%	769 person(s)
Total girls aged 6-11 years old	16%	15%	14%	1,695 person(s)
Total girls aged 6-11 who are in school	76%	71%	78%	1,330 person(s)
Total girls aged 6-11 who are not in school	24%	29%	22%	365 person(s)
Total boys aged 6-11 years old	17%	17%	15%	1,753 person(s)
Total boys aged 6-11 who are in school	80%	73%	77%	1,349 person(s)
Total boys aged 6-11 who are not in school	20%	27%	23%	404 person(s)

Note 1: Percentage is calculated on the basis of the total number of children within 6-11 year age group for the first 3 rows and for the total girls and the total boys aged 6-11 yrs.

Note 2: Number of girls aged 6-11 who are in & not in school is calculated against the total number of girls aged 6-11 yrs. Number boys, 6-11 yrs who are in & not in school are calculated against the total number of boys aged 6-11 yrs.

3.1.8 Percentage of 6-11 year old Children not in School, by Commune, in 2008



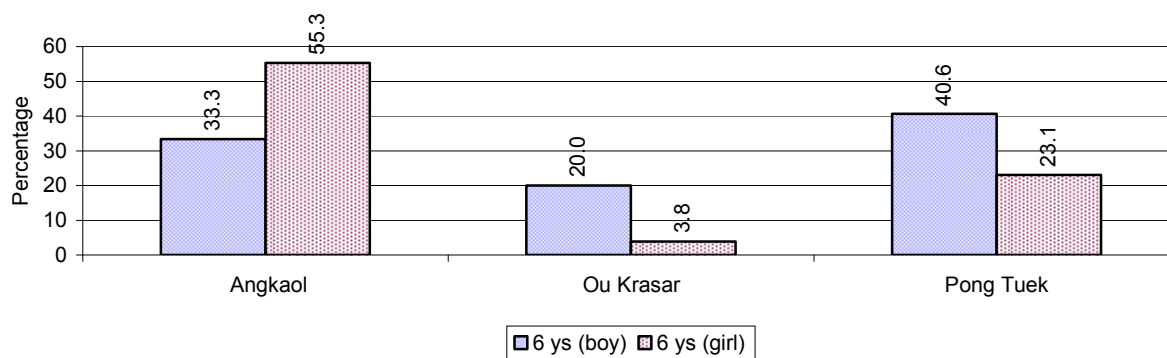
Note: calculated on the basis of the total number of children within 6-11 year age group in the commune.

3.1.9 Enrolment of 6 year old Children over 3 years

Description	2006 %	2007 %	2008	
			%	Number
Total % and number of children aged 6 years old	4%	4%	4%	961 person(s)
Total % of children aged 6 years old in school	55%	60%	65%	621 person(s)
Total % of children aged 6 years old not in school	45%	40%	35%	340 person(s)

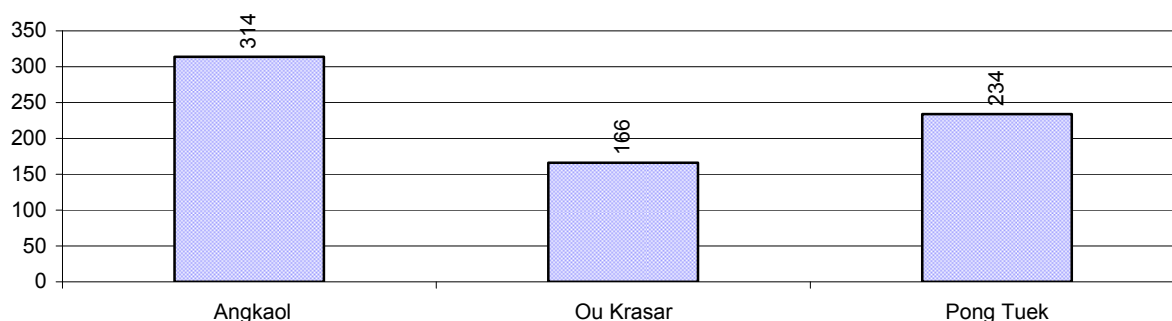
Note: First row calculated as a percentage of total population. Second and third row calculated as a percentage of the total number of 6 year olds.

3.1.10 Percentage of 6 year old Children not in School, by Commune, in 2008



Note: Calculated as a percentage of total 6 year old population

3.1.11 Number of 5 year old Children in each Commune in 2008

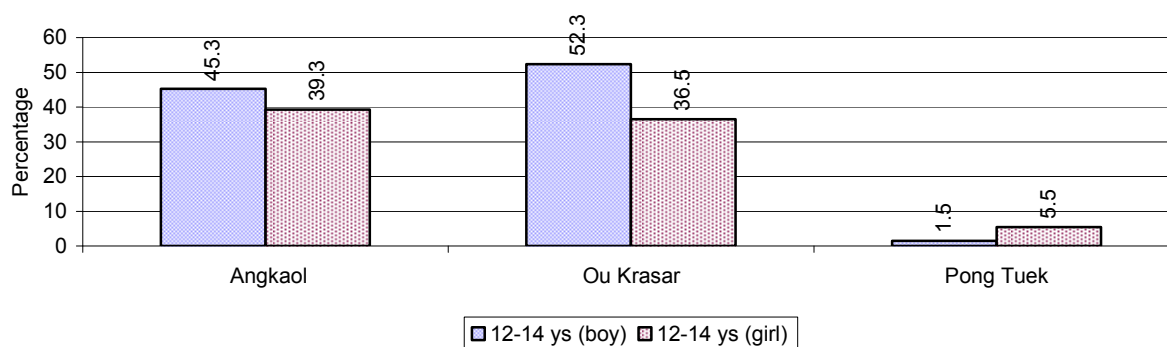


3.1.12 Enrolment at Lower Secondary Level over 3 years

Description	2006 %	2007 %	2008	
			%	Number
Total children aged 12-14 years old	9%	9%	8%	1,874 person(s)
Children aged 12-14 years old in school	76%	78%	69%	1,292 person(s)
Children aged 12-14 years old not in school	24%	22%	31%	582 person(s)
Total girls aged 12-14 years old	8%	9%	8%	952 person(s)
Girls aged 12-14 years old in school	78%	79%	73%	692 person(s)
Girls aged 12-14 years old not in school	22%	21%	27%	260 person(s)
Total boys aged 12-14 years old	10%	8%	8%	922 person(s)
Boys aged 12-14 years old in school	74%	77%	65%	600 person(s)
Boys aged 12-14 years old not in school	26%	23%	35%	322 person(s)

Note: Percentage is calculated on the basis of number of the total number of children within 12-14 yrs group, except for the first row of each section which is calculated on the basis of the total population.

3.1.13 Percentage of 12-14 year olds not in School, by Commune, in 2008



Note: Calculated as a percentage of the total 12-14 year old population in each commune

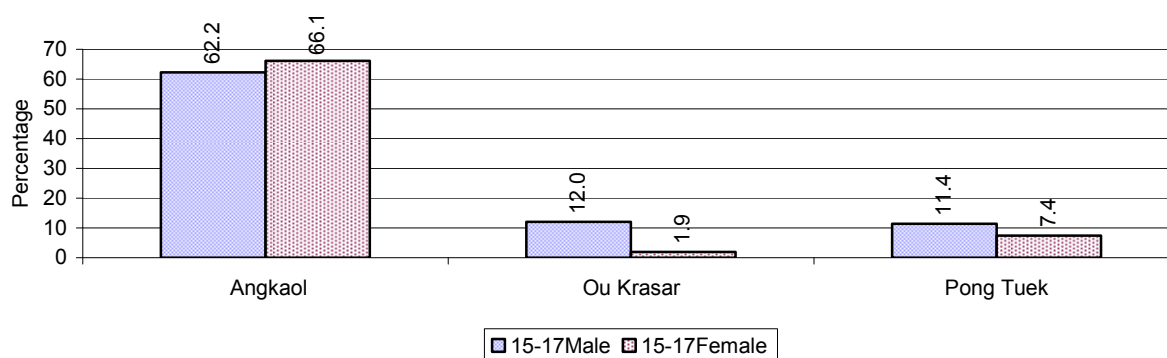
3.1.14 Upper Secondary Schools over 3 years

Description	2006	2007	2008
Number of upper secondary schools	0 school(s)	0 school(s)	0 school(s)
Number of upper secondary school rooms	0 room(s)	0 room(s)	0 room(s)
Number of upper secondary classes	0 class(es)	0 class(es)	0 class(es)
Number of upper secondary teachers	0 person(s)	0 person(s)	0 person(s)
Ratio of 15-17 yr olds to number of school	N/A	N/A	N/A
Ratio of 15-17 yr olds to number of school room	N/A	N/A	N/A
Ratio of 15-17 yr olds to number of classes	N/A	N/A	N/A
Ratio of 15-17 yr olds to number of teacher	N/A	N/A	N/A

3.1.15 Enrolment of 15-17 year old teenagers over 3 years

Description	2006	2007	2008
Number of teenage, 15-17 years old	1,911 person(s)	1,966 person(s)	1,825 person(s)
Number of teenage, 15-17 years old, who are not studying	451 person(s)	305 person(s)	438 person(s)
Percentage of teenage, 15-17 years old not studying	24%	16%	24%

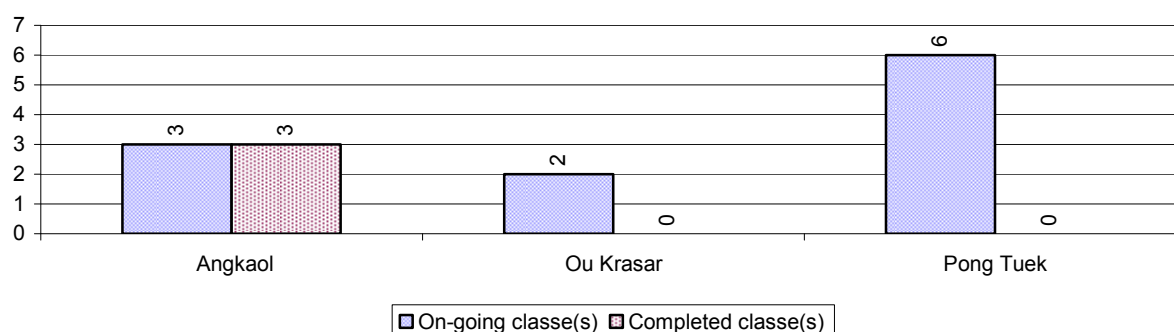
3.1.16 Percentage of 15-17 year old Teenagers not at School, by Commune, in 2008



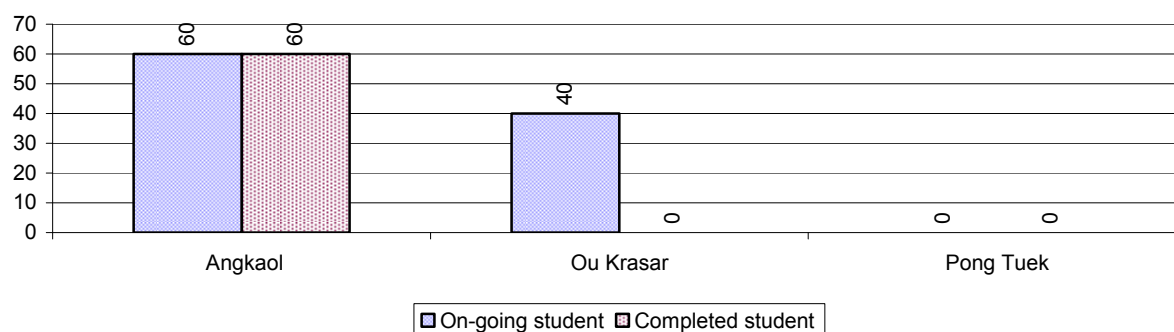
3.1.17 Literacy Classes as of 2008

Literacy classes	Organized by:		Other Program(s)	Total
	PDoEYS	NGOs		
Number of On-going literacy classes	11 class(es)	0 class(es)	0 class(es)	11 class(e(s)
Number of literacy students in on-going classes	100 person(s)	0 person(s)	0 person(s)	100 person(s)
Completed literacy class(es)	3 classes	0 classes	0 classes	3 classes
Number of literacy students that have completed literacy classes	60 person(s)	0 person(s)	0 person(s)	60 person(s)
Number of students that passed	54 person(s)	0 person(s)	0 person(s)	54 person(s)

3.1.18 Number of on-going and completed Literacy Classes, by Commune, in 2008



3.1.19 Students of on-going & completed Literacy Classes, by Commune, in 2008

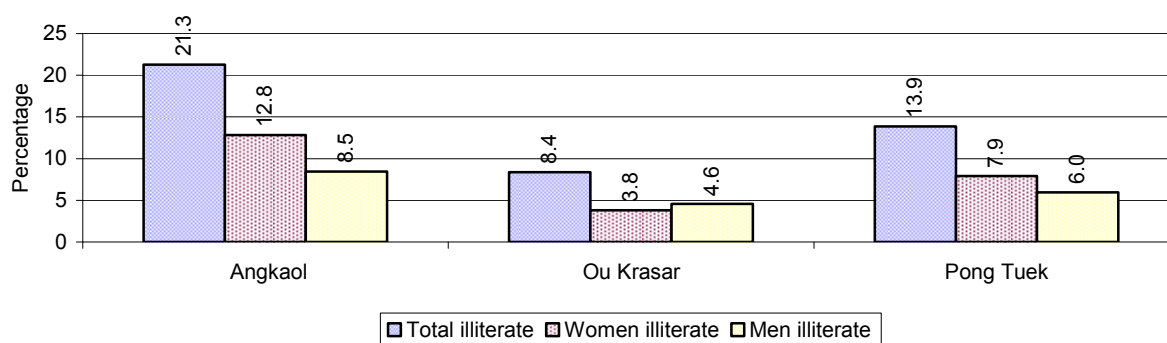


3.1.20 Percentage of illiterate People between 15-60, over 3 years

Illiteracy Status	2006 %	2007 %	2008	
			%	Number
Illiterate people, 15-60 years old	17%	11%	14%	1,886 person(s)
Illiterate females, 15-60 years old	9%	6%	8%	1,063 person(s)
Illiterate people, 15-17 years old	7%	4%	6%	112 person(s)
Illiterate females, 15-17 years old	4%	1%	3%	46 person(s)
Illiterate people, 18-24 years old	13%	7%	13%	423 person(s)
Illiterate females, 18-24 years old	8%	4%	8%	258 person(s)
Illiterate people, 25-60 years old	21%	15%	17%	1,351 person(s)
Illiterate females, 25-60 years old	12%	8%	9%	759 person(s)

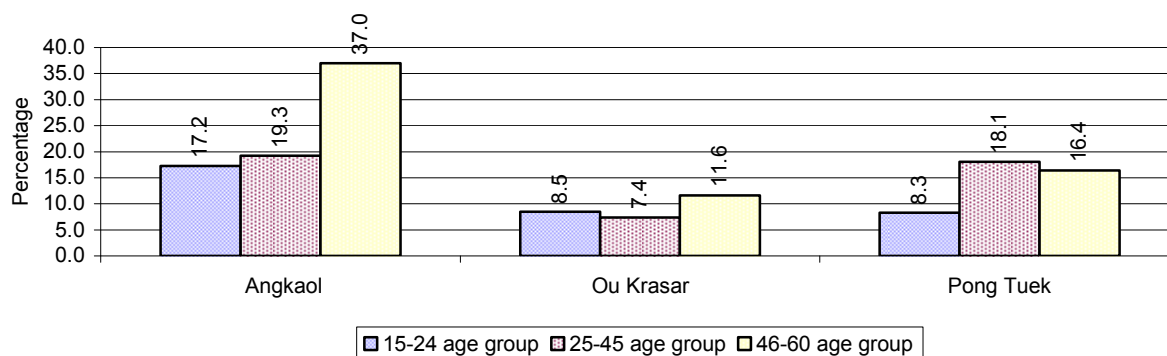
Note: Percentage is calculated on the basis of number of people in age each group.

3.1.21 Percentage illiterate People among 15-60 yrs old, by Commune, in 2008



Note: Percentages are calculated on the basis of number of people in that age group.

3.1.22 Percentage illiterate People for 15-24 yrs, 25-45 yrs and 46-60 yrs, by Commune, in 2008



Note: Percentage of illiterate people in each age group is calculated on the basis of number of people in that age group.

3.2 Health

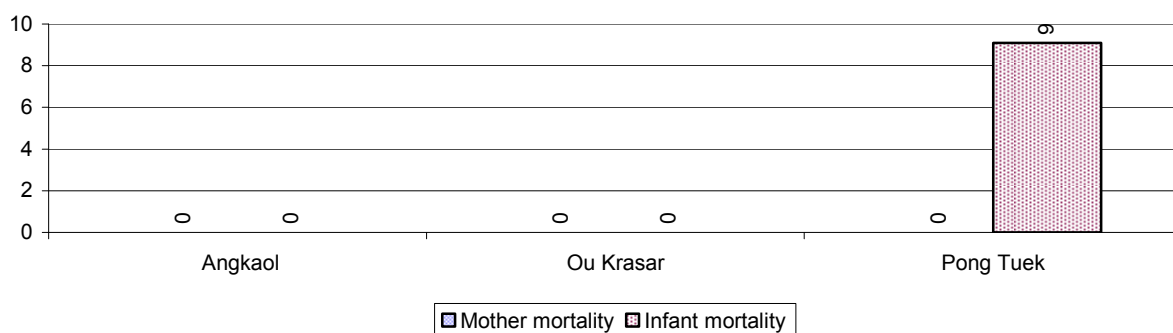
3.2.1 Health Situation of Women and Children, over 3 years

Description	2006	2007	2008
Number families with a birth during the year	420 families	383 families	330 families
Number of women who had their baby delivered by a TBA	260 person(s)	203 person(s)	134 person(s)
Percentage of women who had their baby delivered by a TBA	62 %	53 %	41 %
Number of women who had their baby delivered by a midwife	160 person(s)	180 person(s)	196 person(s)
Percentage of women had their baby delivered by a midwife	38 %	47 %	59 %
Number of mothers who died within 1 month of giving birth	1 person(s)	1 person(s)	0 person(s)
Mothers who died within 1 month of giving birth per 100,000 families having a delivery	238	261	0
Number of infants born during the year	420	400	332

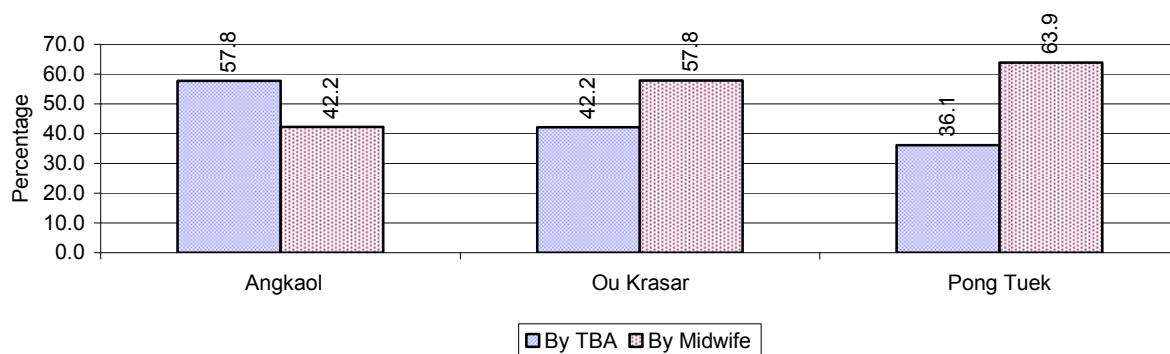
Description	2006	2007	2008
	person(s)	person(s)	person(s)
Number of Infants who died within 1 month	3 person(s)	7 person(s)	2 person(s)
Infants mortality within 1 month per 1,000 births	7	18	6
Number of children who died below the age of 5.	13 person(s)	9 person(s)	6 person(s)
Number of infants, aged 9-12 months, born during the year	192 person(s)	230 person(s)	108 person(s)
Nr. infants, aged 9-12 months, not receiving full immunization	23 person(s)	8 person(s)	3 person(s)
% of 9-12 months infants, not receiving full immunization	12 %	3 %	3 %

Note: TBA = Traditional Birth Attendant

3.2.2 Mothers dying within 0 days to 1 month of giving Birth and Infants dying within 1 month in 2008, by Commune

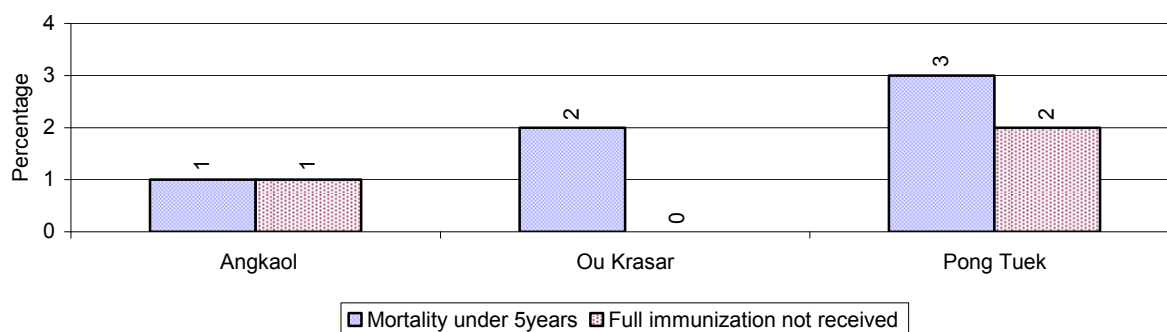


3.2.3 Percentage of Women delivering with a TBA or Midwife, by Commune



Note: Calculated as a percentage of total deliveries

3.2.4 Percentage of Children dying below 5 & of 9-12 months not receiving full Immunization, by Commune, in 2008



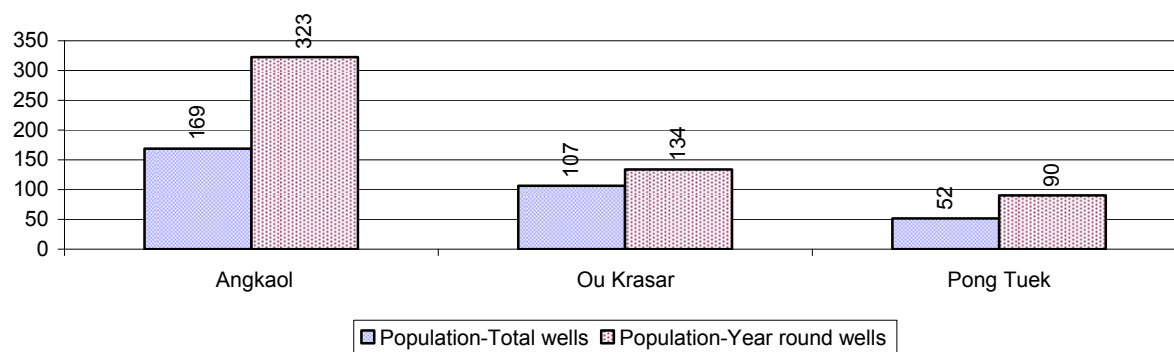
Note: Mortality rate calculated as a percentage of the total 5 year old population. Lack of immunization received calculated as a percentage of the total number 9-12 months olds there are

3.3 Water and Sanitation

3.3.1 Number of different types of Wells over 3 years

Type of wells	Number of wells by year		
	2006	2007	2008
<i>Total number of pumped or mixed wells</i>	108	118	158
Year-round usable pumped or mixed wells	65	72	96
Dry season unusable pump or mixed wells	43	46	62
Pump or mixed wells needing repair/rehabilitation	44	51	47
<i>Total number of ring wells</i>	86	93	121
Year-round usable ring wells	51	62	76
Dry season unusable ring wells	35	31	45
Ring wells needing repair/rehabilitation	31	24	29
<i>Total number of unprotected dug wells</i>	45	51	20
Year-round usable unprotected dug wells	18	22	13
Dry season unusable unprotected dug wells	27	29	7

3.3.2 Ratio of People to Wells, by Commune, in 2008

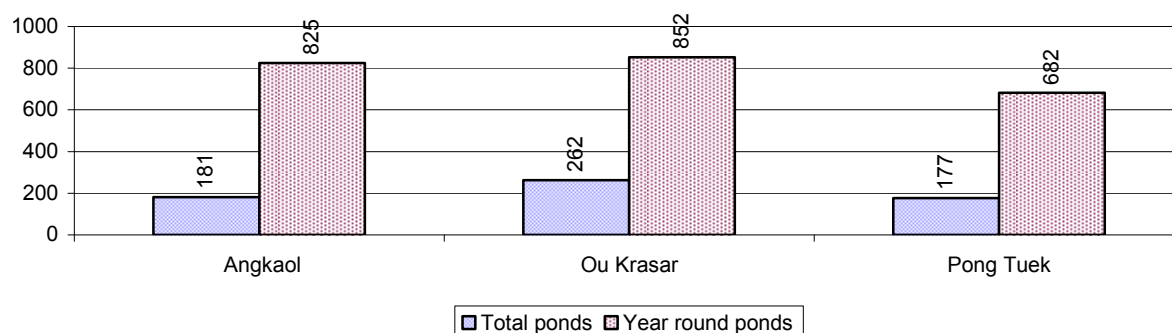


Note: Year-round wells excluding unprotected wells

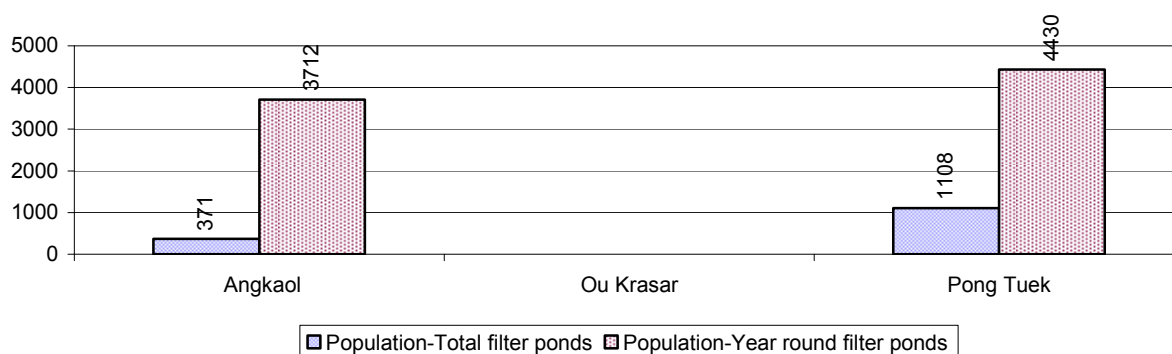
3.3.3 Potable Ponds over 3 years

Type of Pond	2006	2007	2008
Total number of normal-type ponds	94 pond	117 pond	117 pond
Year-round usable normal-type ponds	31 pond	25 pond	30 pond
Dry season unusable normal-type ponds	63 pond	92 pond	87 pond
Normal-type ponds needing repair/rehabilitation	41 pond	76 pond	47 pond
Total number of filter ponds	14 pond	30 pond	28 pond
Year-round usable filter ponds	4 pond	7 pond	4 pond
Filter ponds, dry season unusable	10 pond	23 pond	24 pond
Filter ponds needing repair/rehabilitate	10 pond	21 pond	4 pond

3.3.4 Ratio of People to normal Ponds, by Commune in 2008



3.3.5 Ratio of People to Filter Ponds, by Commune, in 2008

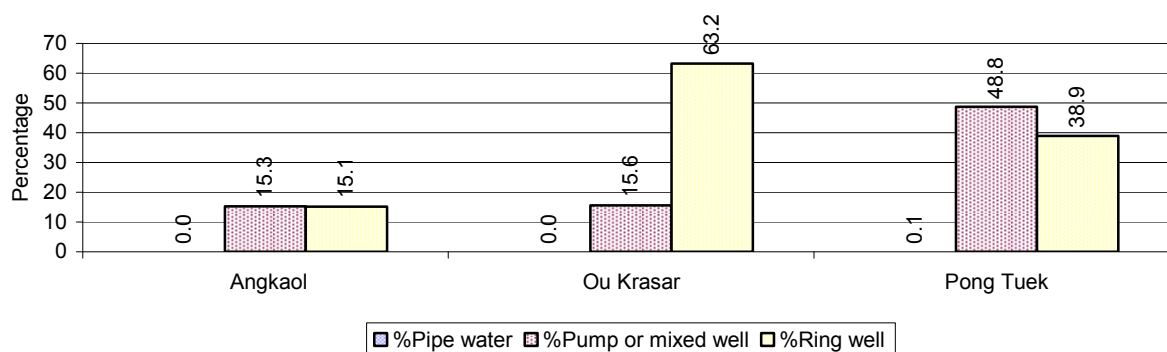


3.3.6 Source of potable Water for Households, over 3 years

Water sources	2006 %	2007 %	2008	
			%	Number
Families using water from purification system	0%	0 %	0 %	1 families
Families using water from pump, mixed wells	30%	29 %	29 %	1,379 families
Families using water from ring wells and open dug wells	23%	35 %	39 %	1,846 families
Families using water from pond	35%	24 %	25 %	1,203 families
Families using water from rain water storage	1%	5 %	6 %	285 families
Families using water from rivers, lakes, natural ponds and reservoirs	11%	7 %	1 %	68 families

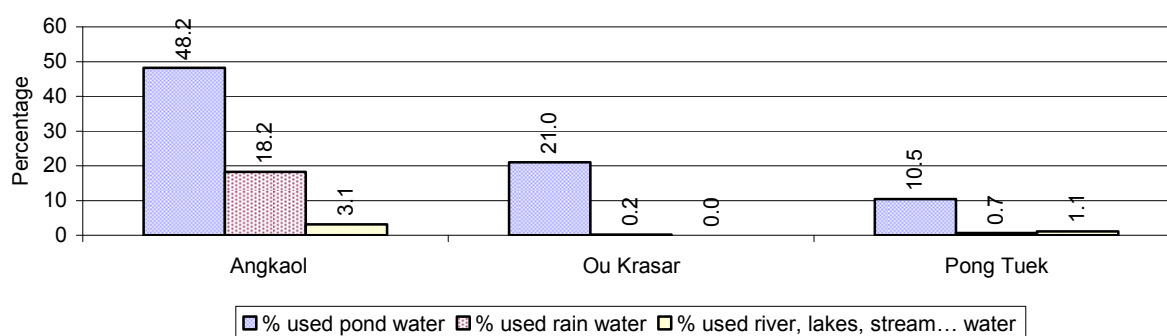
Note: Calculated as a percentage of the total number of families.

3.3.7 Percentage Families using different Water Sources, by Commune, in 2008



Note: Calculated as a percentage of the total number of families in each commune

3.3.8 Percentage Families using Water from Rain Water Storage, Ponds and natural Sources (rivers/lakes/natural ponds/reservoirs), by Commune, 2008



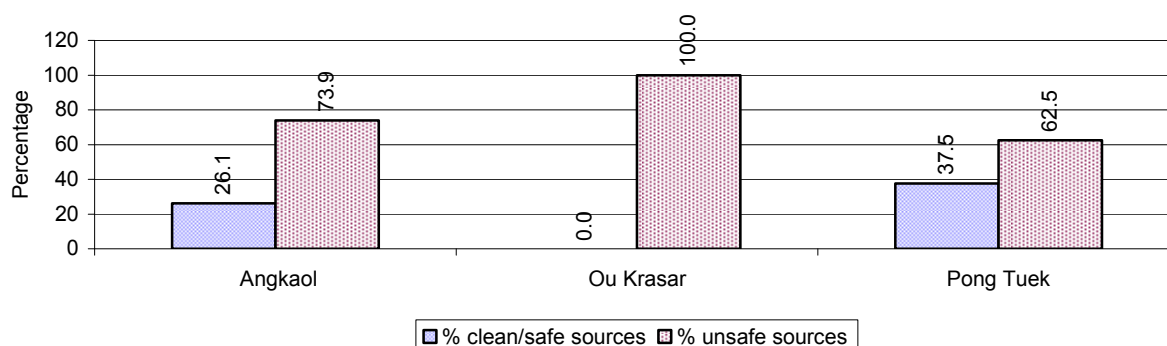
Note: Calculated as a percentage of the total number of families in each commune

3.3.9 Drinking Water Sources in the dry Season over 3 years

Percentage Families that get drinking water from:	2006 %	2007 %	2008	
			%	Number
from clean/safe sources	5 %	28 %	23 %	1,106 families
from unsafe sources	95 %	72 %	77 %	3,676 families

Note: Calculated as a percentage of the total number of families.

3.3.10 Percentage Families using safe and unsafe Water Sources in the dry Season, by Commune, in 2008



Note: Calculated as a percentage of the total number of families in each commune.

3.3.11 Drinking Water Purification by Households, over 3 years

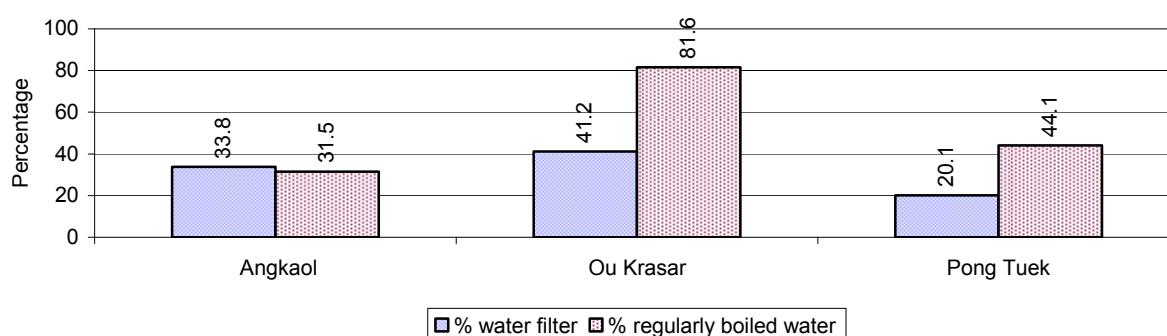
This table shows the different ways families make water safe for drinking.

Families, who:	2006	2007	2008	
	%	%	%	Number
Filter water for drinking	15%	16%	30 %	1,454 families
Boil water for drinking	54%	54%	51 %	2,443 families

Note: Calculated as a percentage of the total number of families

3.3.12 Percentage Families filtering Water or regularly boiling Water, by Commune, in 2008

This graph shows the different ways families make drinking water safe.



Note: Calculated on as a percentage of the total number of families in each commune.

3.3.13 Families' access to Water, over 3 years

Families access to water	2006	2007	2008	
	%	%	%	Number
Families with water at home or in less than 150m	2%	2%	3 %	134 families
Families with water 150m or more away from home	9%	19%	25 %	1,185 families

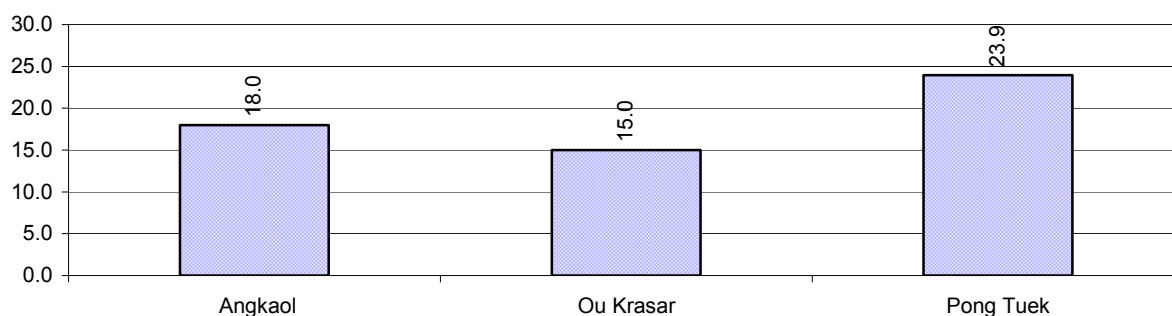
Note: Calculated as a percentage of the total number of families

3.3.14 Ratio of people to Latrines over 3 years

Description	2006	2007	2008	
	Ratio	Ratio	Ratio	Number
Ratio of people to latrines	29.8	25.8	18.7	1,238.0

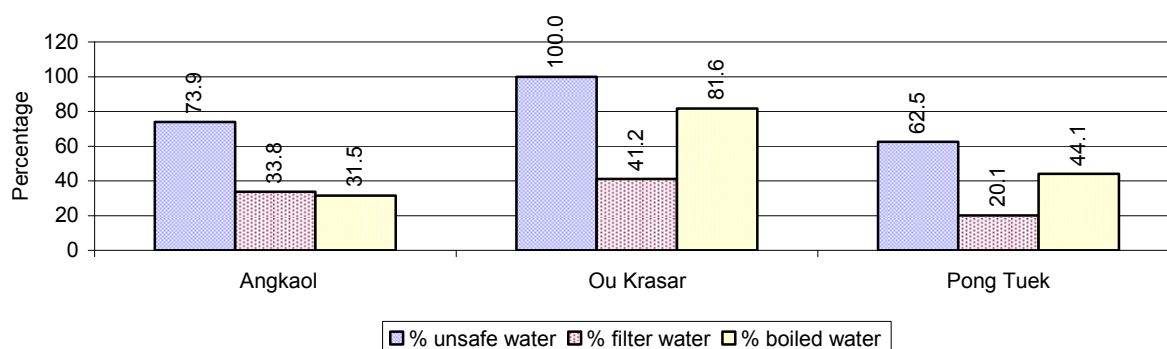
Note: Ratio calculated by dividing the number of houses with latrines by the total population

3.3.15 Ratio of People to Latrines, by Commune, in 2008



Note: Ratio calculated by dividing the number of houses with latrines by the total population in a Commune.

3.3.16 Percentage of Families drinking boiled, filtered or unsafe Water, by Commune, in 2008



Note: Calculated as a percentage of the total number of families in each commune.

3.4 Vulnerable groups

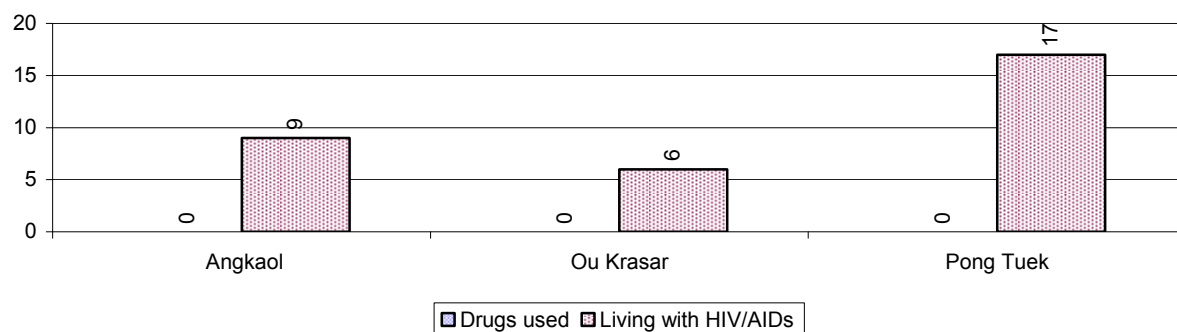
3.4.1 Vulnerable Groups in need of special Protection over 3 years

Vulnerable groups	2006	2007	2008
Victims of sexual abuse	0 person(s)	4 person(s)	0 person(s)
Victims of human trafficking	0 person(s)	0 person(s)	0 person(s)
Families with family member(s) using drugs	0 families	0 families	0 families
Families with family member(s) living with HIV/AIDS	37 families	18 families	32 families
Children under 18 yrs old whose parent died of AIDS	59 person(s)	48 person(s)	45 person(s)
Orphaned/abandoned children under 18 yrs old (all cases)	89 person(s)	79 person(s)	68 person(s)
Elderly persons without guardian	12 person(s)	14 person(s)	8 person(s)
Disabled people able to earn an income	110 person(s)	11 person(s)	63 person(s)
Disabled people unable to earn an income	9 person(s)	53 person(s)	33 person(s)
Disabled people under 18 yrs old	17 person(s)	9 person(s)	24 person(s)
Victims of natural disasters	176 families	38 families	30 families
Victims of land mines and unexploded weapons	2 person(s)	4 person(s)	8 person(s)

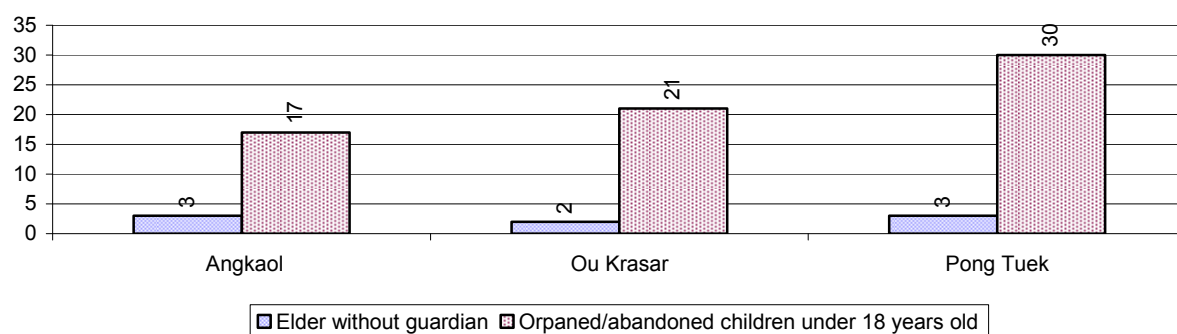
3.4.2 Registered Victims of sexual Abuse or Trafficking, by Commune, for 2008

There were no sexual abuse or trafficking in this District in 2008

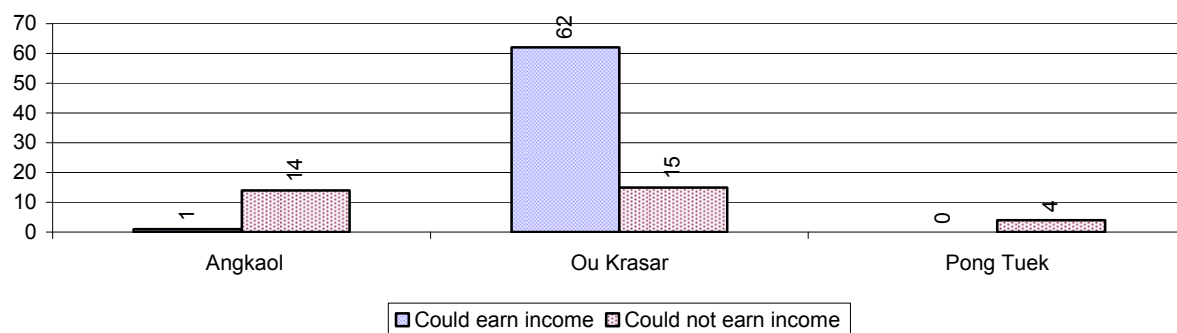
3.4.3 Registered Families with Member(s) using Drugs or living with HIV/AIDS, by Commune, for 2008



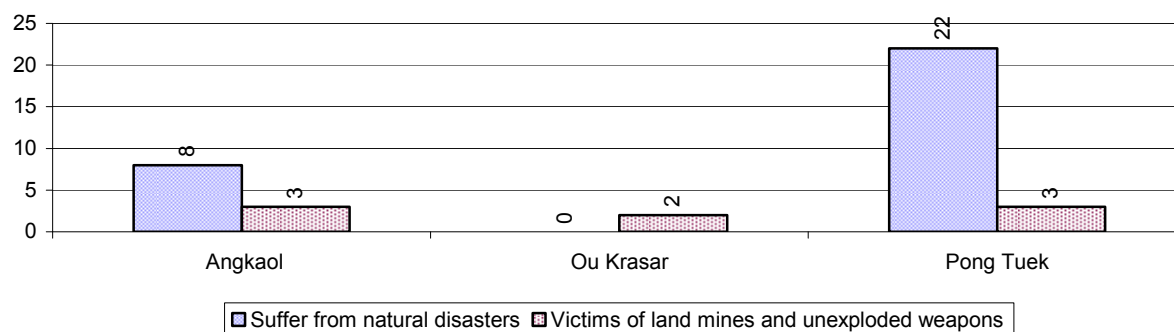
3.4.4 Elderly Persons without a Guardian and orphaned/abandoned Children under 18 years old, by Commune, for 2008



3.4.5 Number of disabled People who could or could not earn an Income, by Commune, for 2008



3.4.6 Number of Families who suffered from natural Disasters, and number of Victims of Land Mines and unexploded Weapons, by Commune, in 2008



3.5 Migration

3.5.1 Migration over 3 years

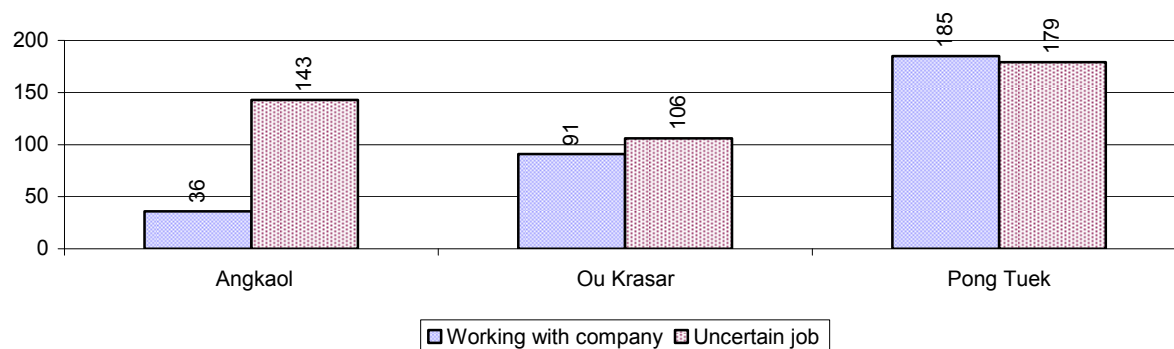
Description	2006	2007	2008
Number of families permanently in-migrated	15 families	14 families	35 families
Total number of people	53 person(s)	59 person(s)	138 person(s)
Total number of female	30 person(s)	19 person(s)	65 person(s)
Number of families permanently out-migrated	50 families	29 families	83 families
Total number of people	109 person(s)	88 person(s)	240 person(s)
Total number of female	64 person(s)	43 person(s)	99 person(s)
Number of families staying temporarily	10 families	8 families	17 families
Total number of people	20 person(s)	37 person(s)	55 person(s)
Total number of female	8 person(s)	20 person(s)	27 person(s)

3.5.2 Job Migration

Description	2006	2007	2008
Number of people migrated to work with company/factory	2%	2%	3%
Number of people migrated to work, but have uncertain jobs	2%	3%	4%

Note: Calculated as a percentage of the total population of 18-60 year olds

3.5.3 Number of People working outside their home Villages in a Company/Factory or with an uncertain Job in 2008

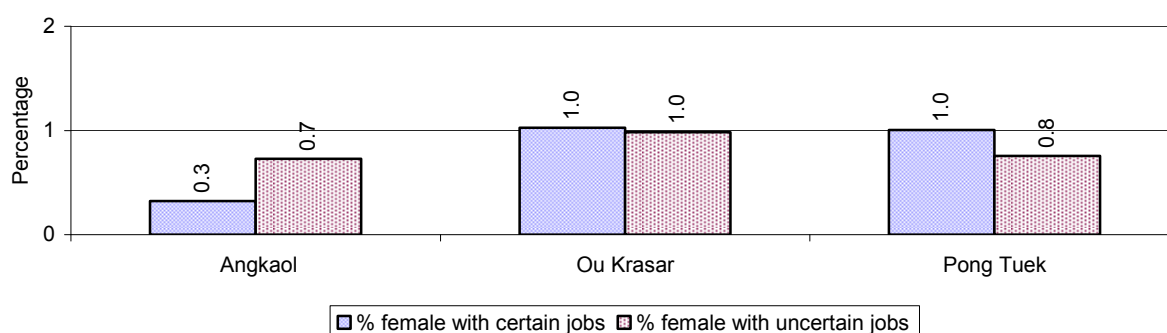


3.5.4 Female migration over 3 years

Description	2006 %	2007 %	2008	
			%	Number
Total number of migrants	2.0%	2.4%	3.2%	740 person(s)
Number of female migrants	1.1%	1.3%	1.6%	371 person(s)
Total number of migrants, who go to work with company/factory (with certain jobs)	0.8%	1.1%	1.4%	312 person(s)
Number of female migrants with certain jobs	0.6%	0.8%	0.8%	183 person(s)
Total number of migrants with uncertain jobs	1.1%	1.2%	1.9%	428 person(s)
Number of female migrants with uncertain jobs	0.5%	0.5%	0.8%	188 person(s)

Note: Calculated as a percentage of the total population

3.5.5 Percentage female Migrants with certain and uncertain Jobs, by Commune, in 2008



Note: Calculated as a percentage of the total population of the commune

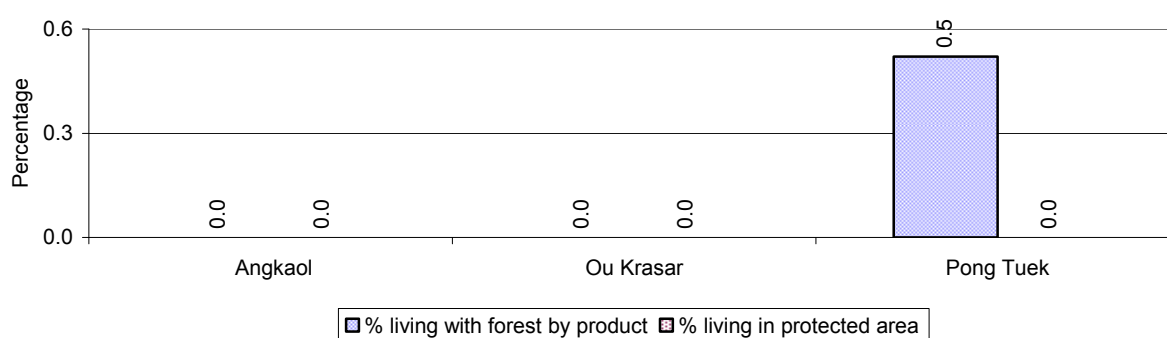
4 Natural Resources and Environment (NRE)

4.1 Families involved with NRE issues over 3 years

Description	2006 %	2007 %	2008	
			%	Number
Families living with forest by products	0 %	0 %	0 %	10 families
Families living in a protected area	0 %	0 %	0 %	0 families
Houses with access to garbage collection service	0 %	0 %	0 %	0 families
Families affected by environmental pollution	0 %	0 %	0 %	0 families
Families using chemical fertilizer	83 %	87 %	81 %	3,879 families
Families using chemical pesticide	29 %	21 %	28 %	1,328 families

Note: Calculated as a percentage of the total number of families

4.2 Percentage of Families involved with Natural Resource issues, by Commune, for 2008



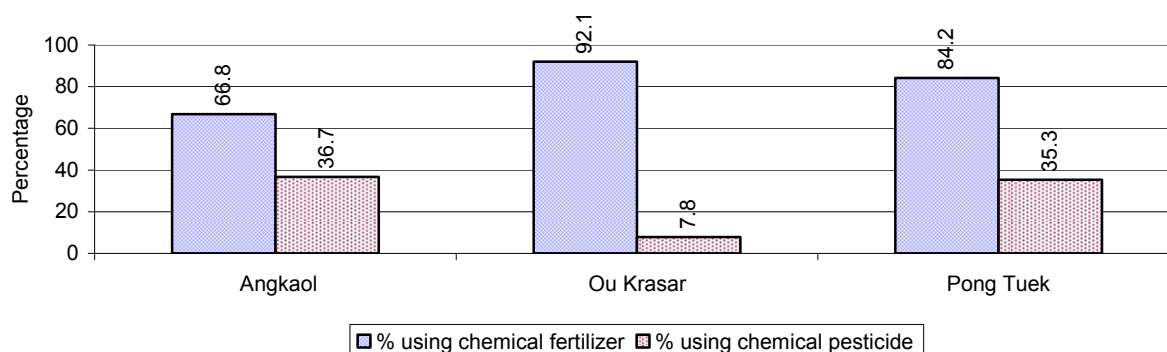
Note: Calculated as a percentage of the number of families in each commune

4.3 Percentage Houses with access to Garbage collection and Families affected by environmental Pollution, by Commune, for 2008

There were no houses with access to garbage collection and there were no families affected by environmental pollution in this District in 2008

Note: Garbage collection is calculated as a percentage of the total number of houses in each commune and families affected by environmental pollution is calculated as a percentage of the total number of families in each commune.

4.4 Percentage Families using chemical Fertilizer and chemical Pesticides, by Commune, for 2008



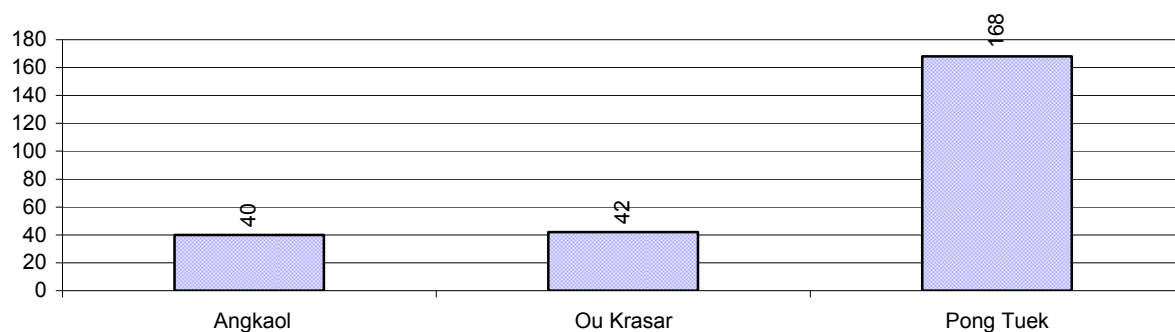
Note: Calculated as a percentage of the total number of families in each commune

5 Administration and Security

5.1 Birth Registration across 3 years

Description	2006	2007	2008
Number of infants to be registered	417 person(s)	393 person(s)	330 person(s)
Number of unregistered infants the year	138 person(s)	245 person(s)	250 person(s)
Percentage of infants unregistered	33 %	62 %	76 %

5.2 Number of unregistered Infants born in 2008, by Commune

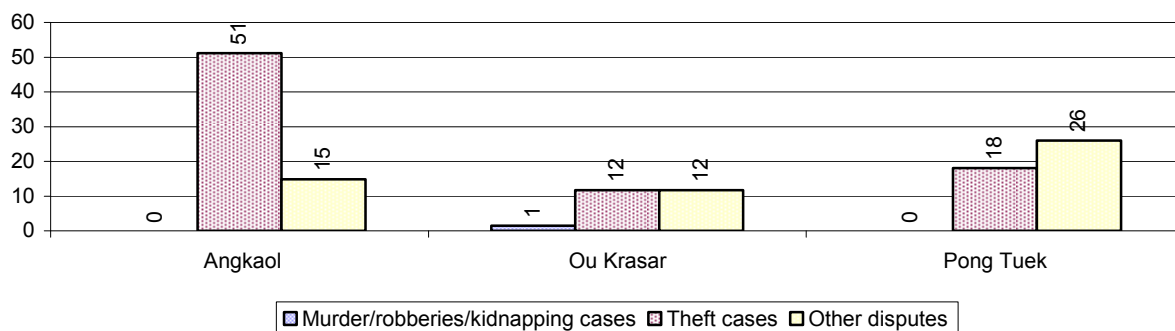


5.3 Registered criminal Cases over 3 years

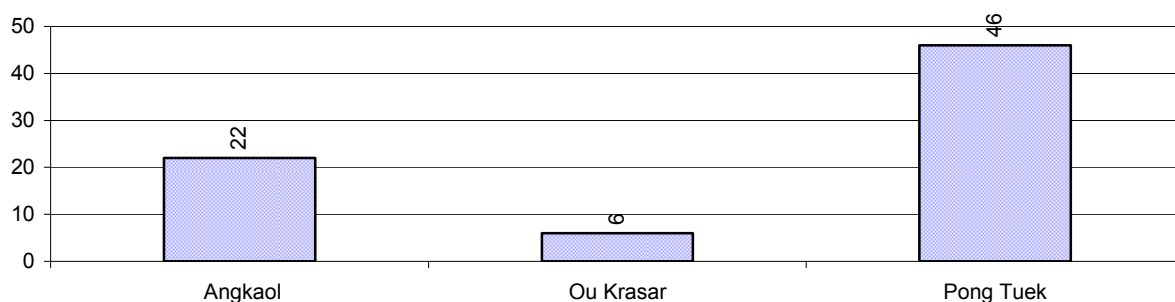
Description	2006	2007	2008
Murders, robberies and kidnapping cases	0 case(s)	1 case(s)	1 case(s)
Theft cases	113 case(s)	70 case(s)	62 case(s)
land dispute cases	96 case(s)	90 case(s)	74 case(s)
Other disputes cases	74 case(s)	50 case(s)	42 case(s)

Note: this reflects only registered criminal cases

5.4 Registered criminal Cases per 10,000 people, by Commune, for 2008



5.5 Number of registered Land Disputes, by Commune, in 2008

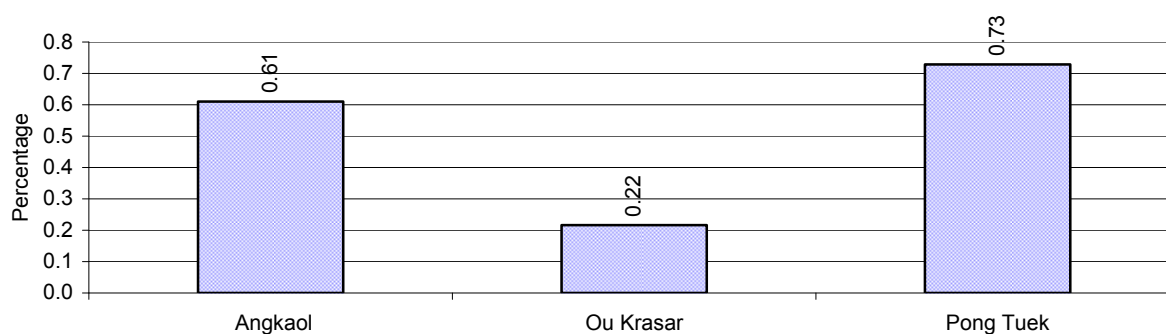


6 Gender

6.1 Registered Domestic Violence over 3 years

Description		2006	2007	2008
Families experiencing domestic violence		37 families	26 families	26 families(s)
% families experiencing domestic violence		1 %	1 %	1 %
Domestic violence cases reported by village chiefs		43 case(s)	13 case(s)	15 case(s)
Type	Physical violence	31 case(s)	6 case(s)	11 case(s)
	Sexual violence	0 case(s)	0 case(s)	0 case(s)
	Mental violence	6 case(s)	0 case(s)	0 case(s)
	Household economic violence	6 case(s)	7 case(s)	4 case(s)
Number of administrative decisions on domestic violence		4 case(s)	12 case(s)	15 case(s)
% of administrative decisions on domestic violence		9 %	92 %	100 %

6.2 Percentage of registered cases of Families experiencing domestic Violence, by Commune, in 2008



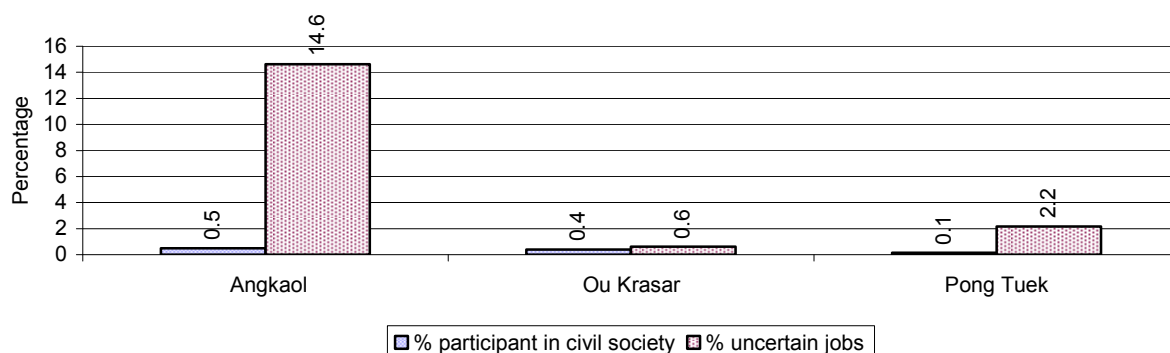
Note: Calculated as a percentage of the total number of families in each commune

6.3 Women's involvement over 3 years

Description	2006 %	2007 %	2008	
			%	Number
People participating in civil society	0%	1%	1%	158 person(s)
Women participating in civil society	0%	0%	0%	76 person(s)
People, 18-60 yrs, with uncertain/irregular jobs	17%	14%	12%	1,349 person(s)
Women, 18-60 yrs, with uncertain/irregular jobs	9%	7%	5%	612 person(s)

Note: Participation can be in NGOs, CBOs, credit groups, women's unions, parties and other civil society organizations. The first section is calculated as a percentage of the total population. The second section is calculated as a percentage of the total 18-60 year old population.

6.4 Percentage of Female Participants in Civil Society and of 18-60 year women with uncertain Jobs, by Commune, in 2008



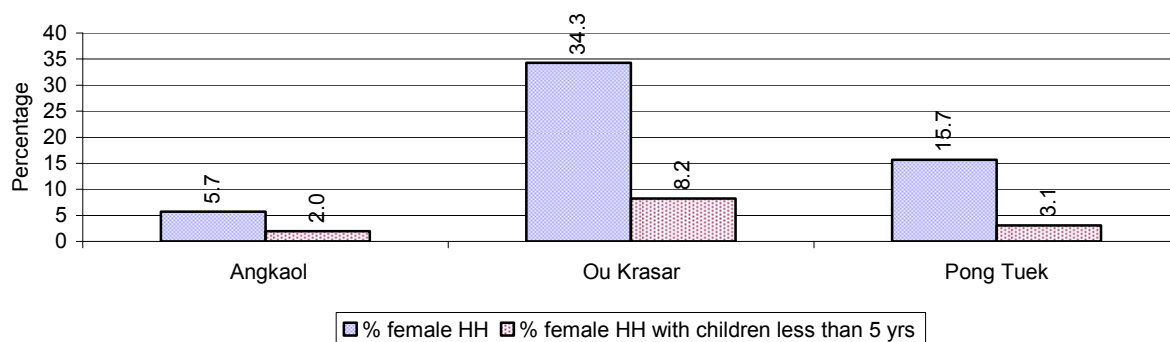
Note: Percentage of female participants in civil society is calculated as a percentage of the total population per commune. The percentage of 18-60 years old women with uncertain jobs is calculated as a percentage of the total 18-60 year old population per commune.

6.5 Female-headed Households over 3 years

Families with:	2006	2007	2008	
	%	%	%	Number
Households in which a woman is the family head	24%	23%	18%	860 families
Households in which a woman is the family head with children of less than 5 yrs	4%	5%	4%	202 families

Note: Calculated as a percentage of the total number of families

6.6 Percentage female-headed Households and with Children of less than 5 years old, by Commune, in 2008



Note: Calculated as a percentage of the total number of families in each commune
HH: Headed Household

7 Indigenous People in the District

7.1 Ethnic Minorities in the District over 3 years

Race of indigenous	2006		2007		2008	
	# families	# population	# families	# population	# families	# population
Phnong	0 families	0 person(s)	0 families	0 person(s)	0 families	0 person(s)
Kouy	0 families	0 person(s)	0 families	0 person(s)	0 families	0 person(s)
Stieng	0 families	0 person(s)	0 families	0 person(s)	0 families	0 person(s)
Mil	0 families	0 person(s)	0 families	0 person(s)	0 families	0 person(s)
Kroal	0 families	0 person(s)	0 families	0 person(s)	0 families	0 person(s)
Thmorn	0 families	0 person(s)	0 families	0 person(s)	0 families	0 person(s)
Khaonh	0 families	0 person(s)	0 families	0 person(s)	0 families	0 person(s)
Tompouonn	0 families	0 person(s)	0 families	0 person(s)	0 families	0 person(s)
Charay	0 families	0 person(s)	0 families	0 person(s)	0 families	0 person(s)
Kroeung	0 families	0 person(s)	0 families	0 person(s)	0 families	0 person(s)
Kavet	0 families	0 person(s)	0 families	0 person(s)	0 families	0 person(s)
Saouch	0 families	0 person(s)	0 families	0 person(s)	0 families	0 person(s)
Lun	0 families	0 person(s)	0 families	0 person(s)	0 families	0 person(s)
Kachak	0 families	0 person(s)	0 families	0 person(s)	0 families	0 person(s)
Praov	0 families	0 person(s)	0 families	0 person(s)	0 families	0 person(s)
Others	0 families	0 person(s)	0 families	0 person(s)	0 families	0 person(s)
Total	0 families	0 person(s)	0 families	0 person(s)	0 families	0 person(s)

Note: "Others" refer to other ethnic groups which are not listed.

7.2 Other Minorities in the District over 3 years

Minority	2006		2007		2008	
	# families	# population	# families	# population	# families	# population
Khmer Islamic	0 families	0 person(s)	0 families	0 person(s)	0 families	0 person(s)
Vietnamese	0 families	0 person(s)	2 families	3 person(s)	0 families	0 person(s)
Laos	0 families	0 person(s)	0 families	0 person(s)	0 families	0 person(s)

Note: Number of indigenous and minority population are additional data, so some village may not recorded.

SECTION C: PLANS AND PROJECTS

8 Priorities and Plans

8.1 Priorities of Commune Councils for 2009 in the District by Sector

The District Priority Activity Matrix (DPAM) data are taken from the CDPD. The DPAM is used for the District Integration Workshop (DIW), to show what kind of projects the commune has proposed in their Commune Investment Plan (CIP) for 2009. Donors, departments and other agencies then consider which projects they want to support and which projects they are not interested in. This results in Temporary Agreements between the Commune Council and the Supporter (NGO, Department, private donor, etc), as shown in table 8.2

No.	Project Name	Angkaol	Ou Krasar	Pong Tuek	Req.Project
		230101	230102	230103	Total
Economic					
1	Compost fertilizer training	4 Course/year	2 Course/year	5 Course/year	3
2	Chemical and pesticide application training	4 Course/year	2 training	5 Course/year	4
3	Mixed farming system training	4 Course/year		5 Course/year	2
4	Rice field demonstration	4 ha			1
5	IPM training			5 Course/year	1
6	Subsidiary cropping technique training		2 Course/year	5 Team	2
7	Natural rice cultivation practice	4 Course/year	2 place		2
8	Animal vaccination request	2 time		50 Time	3
9	Village veterinary training	2 person		5 Course/year	3
10	Animal raising training	4 Course/year			1
11	Rat eradication day			5 Team	1
12	Rice seed request	1000 km		2 T	2
13	Calf for raising request	8 Head			1
14	Sow for raising request	40 Head			1
15	Chicken request	300 Head			1
16	Chemical fertilizer request	2000 Kg	10 T		2
17	Road maintenance committee			10 Team	1
18			2 Line		1
19			5 place	4 place	2
20			2 place		1
21		4750 m		3900 m	2
22		2500 m		300 m	2
23	Irrigation maintenance group	3 Team			1
24	Irrigation committee strengthening/formation			5 Fishing Community	1

District Data Book 2009: Development Plans and Projects

No.	Project Name	Angkaol	Ou Krasar	Pong Tuek	Req.Project
		230101	230102	230103	Total
25		1350 m			2
26				14 place	1
27		15 place	4 place	6 place	3
28				2 place	1
29			2 Line	1500 m	2
30		850 m		3 place	3
31				2 place	1
32				1000 m	1
33	Cash credit		2 Team		1
Social					
1	Family planning	12 time		12 time	2
2	Health/hygiene education for local people	4 Course/year	6 time	10 time	3
3	Nutrition awareness education	50 person			1
4	Transmitting disease prevention education			5 time	1
5	Children immunization provision			12 time	1
6	Children and women vaccination	48 time			1
7	Midwife strengthening/training			5 person	1
8	TBA training	2 time		5 person	3
9	TBA equipment needs	4 package			1
10	Tuberculosis treatment accessibility	4 Course/year			1
11	Mosquito nets distribution/treatment	3500 mosqui-net	60 mosqui-net	5 time	3
12	Malaria awareness education	4 Course/year		5 time	2
13	Mosquito larvae removal treatment	20 Time		1620 family	2
14	Dengue fever education programme	4 Course/year	2 time		2
15	Mosquito insecticide spraying campaign		2 time		1
16	Health card for the poor			150 family	1
17	Health subsidiary fund for the poor	700 person		5 time	2
18	Nutrition support	4 time			1
19	Latrine construction	200 toilet	10 toilet	50 place	3
20	KMeragBagykS	200 Jar	10 Jar		2
21				10 place	1
22		10 Pond	2 Pond	2 place	3
23				10 place	1
24				10 place	1

District Data Book 2009: Development Plans and Projects

No.	Project Name	Angkaol	Ou Krasar	Pong Tuek	Req.Project
		230101	230102	230103	Total
25			6 well		1
26	Literacy class	6 place			1
27	Junior high school construction	1 place			1
28	School building			3 building	3
29	Kindergarten school construction/repair		1 class	2 building	2
30	Kid center creation/support		1 class		1
31	Kid center nurse training	150 person			1
32	Teacher/volunteer teacher need		1 person		1
33	School enrollment motivation committee			5 time	1
34	School materials support to poor pupils			5 time	1
35	Scholarship provision to poor pupils	200 person		200 set	3
36	Bicycle/motorcycle/radio repairing skill training			5 Course/year	1
NREM					
1	Environmental awareness and law education	4 Course/year		5 time	2
2	Fishery law education	4 Course/year		1 Team	2
3	Forestry law education	4 Course/year			1
4	Education on importance of the forests			1 Team	1
5	Wildlife protection law education	12 time			2
6	Establishment of NREM protection community			1 Fishing Community	1
7	NREM strengthening			2 time	1
8	Forestry protection poster setting up			2 Team	1
9	Tree plantation project			1650 Tree	1
10	Illegal fishing prevention	12 time		1 Team	2
11	Strengthening fishery community	1 time			2
12	Mangrove forest protection strengthening		2 Fishing Community		1
13	Forest protection strengthening			2 Team	1
14	Public rubbish bin sitting			10 place	1
15	Market/urban place sanitation control			4 place	1
16	Biogas cooking project			25 place	1
17	Waste management education			5 time	1
Administration and Security					
1	Civil registration encouragement		2 time		1
2	Human rights and law training		6 time		1

District Data Book 2009: Development Plans and Projects

No.	Project Name	Angkaol	Ou Krasar	Pong Tuek	Req.Project
		230101	230102	230103	Total
3	Land law dissemination	4 Course/year		5 time	2
4	Provision of land titles/certificates	1420 doc	100 Library	1470 family	3
5	Land conflict resolution committee strengthening			5 place	1
6	People guard activities formation/strengthening			45 Team	1
7	Gambling control/elimination activation	12 time	2 time	5 Time	3
8	Security post creation/construction/repairing	1 Team			1
9	Police post construction/renovation	1 building			1
10	Local security regulation/order dissemination		20 time		1
11	Law/regulation dissemination	4 time			1
12	Water pump group establishment	3 set	4 set	5 Fishing Community	3
13	Poor household listing preparation/support			5 time	1
Gender					
1	Scholarship provision to female pupil			5 Course/year	1
2	Women & Children FP strengthening	1 Course/year			1
3	Women capacity building for social participation		2 time		1
4	Women vocational training			1 Course/year	1
5	Tailor skill training	1 Course/year			1
6	Food cooking/processing skill training	1 Course/year	2 time		2
7	Lady makeup/hair dressing skill training	1 Course/year			1
8	Law against domestic violence dissemination	4 Course/year	2 time	5 time	3
9	Law against trafficking dissemination			5 Course/year	1
10	Trafficking of women/children control activity strengthening			5 Course/year	1
11	Trafficking information disseminations		2 Course/year		1
12	Child protection network formation/strengthening			5 time	1
13	Children's labor exploitation elimination			2 Course/year	1

Source: CDPD – District Priority Matrix

8.2 Temporary Agreements by Commune, for 2009²

At the District Integration Workshop (DIW) the Supporters (donors, agencies, private donors, NGOs, etc.) identify which projects/activities they would like to support or they put forward their own projects to be implemented in a particular commune. Once there is agreement between Commune Councils and Supporters on specific projects a **Temporary Agreement** is signed by the commune and the Supporter to show their mutual commitment to the identified projects/activities.

It is important to keep in mind that such Temporary Agreements do not necessarily result in implementation.

8.2.1 Temporary Agreements for 2009 as per DIW 2008 for Commune: Angkaol

Commune GIS	Commune	Temporary Agreements				Supporter	Funding Source	Listed in CIP befor DIW
		Project Name	Quantity	Unit	Est.Cost (K.Riels)			
Economic								
230101	Angkaol	Vegetable seeds support	200	can	3200	Department of Agriculture Forestry and Fisheries		<input type="checkbox"/>
230101	Angkaol	Mixed farming system training	1	place	1200	Department of Agriculture Forestry and Fisheries	PIF	✓
230101	Angkaol	Child labor awareness dissemination	2	training	1600	Department of Labor and Vocational Training		<input type="checkbox"/>
230101	Angkaol	Labor law dissemination	1	training	5000	Department of Labor and Vocational Training		<input type="checkbox"/>
230101	Angkaol	Animal raising training	1	Course/year	720	Department of Agriculture Forestry and Fisheries	PIF	✓
230101	Angkaol	Animal vaccination request	2	time	4000	Department of Agriculture Forestry and Fisheries		✓
230101	Angkaol	Vegetable growing training	2	training	640	Department of Agriculture Forestry and Fisheries	PIF	<input type="checkbox"/>
230101	Angkaol	IPM on vegetable training	1	training	1200	Department of Agriculture Forestry and Fisheries	PIF	<input type="checkbox"/>
230101	Angkaol	Fish raising, spawning and fry nursery training and demonstration	1	training	2400	Department of Agriculture Forestry and Fisheries	PIF	<input type="checkbox"/>
Social								
230101	Angkaol	Children and women vaccination	48	time	1728	Department of Health	PIF	✓
230101	Angkaol	Health subsidiary fund for the poor	12	Month	3400	Department of Health	PIF	✓

² Not all the data from the CDPD has been translated to English, this has resulted in some cells in the TA tables being blank.

Commune GIS	Commune	Temporary Agreements				Supporter	Funding Source	Listed in CIP before DIW
		Project Name	Quantity	Unit	Est.Cost (K.Riels)			
230101	Angkaol	Family planning	4	training	1600	Department of Health	PIF	✓
230101	Angkaol	Dengue fever education programme	4	Course/year	1600	Department of Health	PIF	✓
230101	Angkaol	Nutrition awareness training for maternity health care	2	training	800	Department of Health	PIF	□
230101	Angkaol	Health/hygiene education for local people	4	Course/year	1600	Department of Health	PIF	✓
Gender								
230101	Angkaol	Women & Children FP strengthening	1	Course/year	600	Department of Women		✓
230101	Angkaol	Tailor skill training	1	Course/year	600	Department of Women	PIF	✓
230101	Angkaol	Lady makeup/hair dressing skill training	4	Course/year	16000	Department of Labor and Vocational Training		✓

8.2.2 Temporary Agreements for 2009 as per DIW 2008 for Commune: Ou Krasar

Commune GIS	Commune	Temporary Agreements				Supporter	Funding Source	Listed in CIP before DIW
		Project Name	Quantity	Unit	Est.Cost (K.Riels)			
Economic								
230102	Ou Krasar	Vegetable seeds support	200	time	3200	Department of Agriculture Forestry and Fisheries		<input type="checkbox"/>
230102	Ou Krasar	Ou Krasa dam water user group community strengthening	1	training	320	Department of Water Resources and Meteorology	PIF	<input type="checkbox"/>
230102	Ou Krasar	Painting water gate, Ou Boeung Krasa	16	time	880	Department of Water Resources and Meteorology	PIF	<input type="checkbox"/>
230102	Ou Krasar	Subsidiary cropping technique training	2	training	640	Department of Agriculture Forestry and Fisheries	PIF	<input checked="" type="checkbox"/>
230102	Ou Krasar	Mixed farming system training and fund support	1	place	120	Department of Agriculture Forestry and Fisheries	PIF	<input type="checkbox"/>
230102	Ou Krasar	IPM on vegetable training	1	training	120	Department of Agriculture Forestry and Fisheries	PIF	<input type="checkbox"/>
230102	Ou Krasar	Fish raising, spawning and fry nursery training and demonstration	1	training	2400	Department of Agriculture Forestry and Fisheries	PIF	<input type="checkbox"/>
230102	Ou Krasar	Education system program support	3	time	4000	Department of Education Youth	PIF	<input type="checkbox"/>

District Data Book 2009: Development Plans and Projects

Commune GIS	Commune	Temporary Agreements				Supporter	Funding Source	Listed in CIP before DIW
		Project Name	Quantity	Unit	Est.Cost (K.Riels)			
						and Sports		
230102	Ou Krasar	Child labor awareness dissemination	2	training	1600	Department of Labor and Vocational Training		<input type="checkbox"/>
230102	Ou Krasar	Community, family and children participation	2	time	1000	Department of Education Youth and Sports	PIF	<input type="checkbox"/>
Social								
230102	Ou Krasar	Health/hygiene education for local people	2	time	800	Department of Health	PIF	✓
230102	Ou Krasar	Effective learning approach	2	time	2000	Department of Education Youth and Sports	PIF	<input type="checkbox"/>
230102	Ou Krasar	Health, safety and child protection	4	time	4600	Department of Education Youth and Sports	PIF	<input type="checkbox"/>
230102	Ou Krasar	All children go to school program	4	time	3516	Department of Education Youth and Sports	PIF	<input type="checkbox"/>
230102	Ou Krasar	Support for vaccinating cattle-buffalo	2	time	4000	Department of Agriculture Forestry and Fisheries		<input type="checkbox"/>
230102	Ou Krasar	Support searching children do not receive full immunization	12	Month	864	Department of Health	PIF	<input type="checkbox"/>
230102	Ou Krasar	Nutrition awareness training for maternity health care	1	training	400	Department of Health	PIF	<input type="checkbox"/>
230102	Ou Krasar	Birth spacing awareness dissemination	1	training	400	Department of Health	PIF	<input type="checkbox"/>
230102	Ou Krasar	Dengue fever education programme	1	time	400	Department of Health	PIF	✓
230102	Ou Krasar	Vocational training	1	training	800	Department of Labor and Vocational Training		<input type="checkbox"/>
Gender								
230102	Ou Krasar	Women capacity building for social participation	1	time	600	Department of Women	PIF	✓
230102	Ou Krasar	Gender responsiveness	3	time	800	Department of Education Youth and Sports	PIF	<input type="checkbox"/>
230102	Ou Krasar	Food cooking/processing skill training	1	time	2000	Department of Women		✓

8.2.3 Temporary Agreements for 2009 as per DIW 2008 for Commune: Pong Tuek

Commune GIS	Commune	Temporary Agreements				Supporter	Funding Source	Listed in CIP befor DIW
		Project Name	Quantity	Unit	Est.Cost (K.Riels)			
Economic								
230103	Pong Tuek	Mixed farming system training	4	Course/year	1600	Human Resource Development Community Sustainability Organization		✓
230103	Pong Tuek	House repairing for the poor	4	training	1600	Human Resource Development Community Sustainability Organization		□
230103	Pong Tuek	Subsidiary cropping technique training	4	Course/year	1280	Department of Agriculture Forestry and Fisheries	PIF	✓
230103	Pong Tuek	Mixed farming system training	1	place	120	Department of Agriculture Forestry and Fisheries	PIF	✓
230103	Pong Tuek	IPM training	1	Course/year	120	Department of Agriculture Forestry and Fisheries	PIF	✓
230103	Pong Tuek	Animal vaccination request	2	time	4000	Department of Agriculture Forestry and Fisheries		✓
230103	Pong Tuek	Agro-eco system analysis at Sangkat Pong Toeung	1	time	4528	Department of Agriculture Forestry and Fisheries	PIF	□
230103	Pong Tuek	Bio gas stove project training	1	Course/year	600	Department of Agriculture Forestry and Fisheries	PIF	□
230103	Pong Tuek	Ring wells construction	5	well	13340	Department of Rural Development	PIF	□
230103	Pong Tuek	Compost fertilizer training	1	Course/year	600	Human Resource Development Community Sustainability Organization		✓
230103	Pong Tuek	Village pond rehabilitation	4	place	8000	Human Resource Development Community Sustainability Organization		✓
230103	Pong Tuek	Vegetable seeds support	200	can	3200	Department of Agriculture Forestry and Fisheries		□
230103	Pong Tuek	Water gate construction	1	place	44000	Department of Water Resources and Meteorology	PIF	✓
230103	Pong	Irrigation committee	4	Fishing	1280	Department of Water	PIF	✓

District Data Book 2009: Development Plans and Projects

Commune GIS	Commune	Temporary Agreements				Supporter	Funding Source	Listed in CIP before DIW
		Project Name	Quantity	Unit	Est.Cost (K.Riels)			
	Tuek	strengthening/formation		Community		Resources and Meteorology		
230103	Pong Tuek	Ronel dam feasibility study	1	time	4000	Department of Water Resources and Meteorology	PIF	<input type="checkbox"/>
230103	Pong Tuek	Child labor awareness dissemination	2	training	1600	Department of Labor and Vocational Training		<input type="checkbox"/>
230103	Pong Tuek	Small business group formation	4	training	1600	Human Resource Development Community Sustainability Organization		<input type="checkbox"/>
230103	Pong Tuek	Water gate painting	40	time	1400	Department of Water Resources and Meteorology	PIF	<input type="checkbox"/>
230103	Pong Tuek	Animal vaccination request	400	Head	2000	Human Resource Development Community Sustainability Organization		✓
230103	Pong Tuek	Fish raising, spawning and fry nursery training and demonstration	1	Course/year	2400	Department of Agriculture Forestry and Fisheries	PIF	<input type="checkbox"/>
230103	Pong Tuek	Cash credit	4	time	10000	Human Resource Development Community Sustainability Organization		<input type="checkbox"/>
230103	Pong Tuek	Eco-system of rice intensification (S.R.I) training	4	training	1600	Human Resource Development Community Sustainability Organization		<input type="checkbox"/>
230103	Pong Tuek	Dream family operation	4	time	1600	Human Resource Development Community Sustainability Organization		<input type="checkbox"/>
230103	Pong Tuek	Vegetable growing training	4	training	1600	Human Resource Development Community Sustainability Organization		<input type="checkbox"/>
230103	Pong Tuek	Rice crop demonstration training	4	training	4756	Human Resource Development Community Sustainability Organization		<input type="checkbox"/>
230103	Pong Tuek	Livestock raising technique training	4	training	1600	Human Resource Development Community Sustainability Organization		<input type="checkbox"/>
230103	Pong	Cow and buffalo raising provision	40	Head	1600	Human Resource		<input type="checkbox"/>

District Data Book 2009: Development Plans and Projects

Commune GIS	Commune	Temporary Agreements				Supporter	Funding Source	Listed in CIP before DIW
		Project Name	Quantity	Unit	Est.Cost (K.Riels)			
	Tuek					Development Community Sustainability Organization		
230103	Pong Tuek	Pig supply for raising	40	Head	8000	Human Resource Development Community Sustainability Organization		<input type="checkbox"/>
230103	Pong Tuek	Water filter container supply	40	Container	1600	Human Resource Development Community Sustainability Organization		<input type="checkbox"/>
230103	Pong Tuek	Duck supply	40	Head	4500	Human Resource Development Community Sustainability Organization		<input type="checkbox"/>
230103	Pong Tuek	Village veterinary training	4	Course/year	4000	Human Resource Development Community Sustainability Organization		✓
230103	Pong Tuek	IPM training	4	Course/year	2050	Human Resource Development Community Sustainability Organization		✓
230103	Pong Tuek	Rice seed request	4	T	2000	Human Resource Development Community Sustainability Organization		✓
230103	Pong Tuek	Rat eradication day	4	Team	2050	Human Resource Development Community Sustainability Organization		✓
230103	Pong Tuek	Subsidiary cropping technique training	4	Team	1200	Human Resource Development Community Sustainability Organization		✓
230103	Pong Tuek	Pond reservoir construction in central compound	4	place	5000	Human Resource Development Community Sustainability Organization		✓
230103	Pong Tuek	Nutrition awareness education	4	Team	20000	Human Resource Development Community Sustainability Organization		<input type="checkbox"/>
230103	Pong Tuek	Nutrition support	4	Team	1600	Human Resource Development Community		<input type="checkbox"/>

District Data Book 2009: Development Plans and Projects

Commune GIS	Commune	Temporary Agreements				Supporter	Funding Source	Listed in CIP before DIW
		Project Name	Quantity	Unit	Est.Cost (K.Riels)			
						Sustainability Organization		
230103	Pong Tuek	Thom Kiri school support	4	time	1600	Human Resource Development Community Sustainability Organization		<input type="checkbox"/>
Social								
230103	Pong Tuek	Food cooking/processing skill training	4	training	32000	Human Resource Development Community Sustainability Organization		<input type="checkbox"/>
230103	Pong Tuek	Children immunization provision	60	time	2160	Department of Health	PIF	✓
230103	Pong Tuek	Health/hygiene education for local people	5	time	2400	Department of Health	PIF	✓
230103	Pong Tuek	School materials support to poor pupils	4	time	12000	Human Resource Development Community Sustainability Organization		✓
230103	Pong Tuek	English class operation	4	Course/year	1600	Human Resource Development Community Sustainability Organization		<input type="checkbox"/>
230103	Pong Tuek	Computer class operation	4	class	1600	Human Resource Development Community Sustainability Organization		<input type="checkbox"/>
230103	Pong Tuek	Youth bridge program	4	time	1600	Human Resource Development Community Sustainability Organization		<input type="checkbox"/>
230103	Pong Tuek	Scholarship provision to poor pupils	200	person	4000	Human Resource Development Community Sustainability Organization		✓
230103	Pong Tuek	School building	4	place	3000	Human Resource Development Community Sustainability Organization		✓
230103	Pong Tuek	Plastic processing skills training	4	Course/year	1600	Human Resource Development Community Sustainability Organization		<input type="checkbox"/>
230103	Pong	Malaria and dengue fever	3	training	1200	Department of Health	PIF	<input type="checkbox"/>

District Data Book 2009: Development Plans and Projects

Commune GIS	Commune	Temporary Agreements				Supporter	Funding Source	Listed in CIP before DIW
		Project Name	Quantity	Unit	Est.Cost (K.Riels)			
	Tuek	prevention training						
230103	Pong Tuek	Weaving skills straining	4	training	1600	Human Resource Development Community Sustainability Organization		<input type="checkbox"/>
230103	Pong Tuek	Coconut shell artwork skills training	4	training	1600	Human Resource Development Community Sustainability Organization		<input type="checkbox"/>
230103	Pong Tuek	School enrollment motivation committee	4	time	2050	Human Resource Development Community Sustainability Organization		✓
230103	Pong Tuek	Scholarship provision to poor pupils	4	set	4000	Human Resource Development Community Sustainability Organization		✓
230103	Pong Tuek	Ring wells construction	4	place	2000	Human Resource Development Community Sustainability Organization		✓
230103	Pong Tuek	Health card for the poor	2	Course/year	800	Department of Health	PIF	✓
230103	Pong Tuek	Kindergarten school construction/repair	4	class	3000	Human Resource Development Community Sustainability Organization		✓
230103	Pong Tuek	Malaria awareness education	4	time	1600	Human Resource Development Community Sustainability Organization		✓
230103	Pong Tuek	TBA training	4	training	1600	Human Resource Development Community Sustainability Organization		✓
230103	Pong Tuek	Health/hygiene education for local people	4	time	1680	Human Resource Development Community Sustainability Organization		✓
230103	Pong Tuek	Latrine construction	4	place	25000	Human Resource Development Community Sustainability Organization		✓
230103	Pong	Health service for the poor support	12	Month	3400	Department of Health	PIF	<input type="checkbox"/>

District Data Book 2009: Development Plans and Projects

Commune GIS	Commune	Temporary Agreements				Supporter	Funding Source	Listed in CIP before DIW
		Project Name	Quantity	Unit	Est.Cost (K.Riels)			
	Tuek							
230103	Pong Tuek	Family planning	3	Course/year	1200	Department of Health	PIF	✓
230103	Pong Tuek	Vocational skill training	1	training	10000	Department of Labor and Vocational Training		□
230103	Pong Tuek	Labor law dissemination	1	training	5000	Department of Labor and Vocational Training		□
NREM								
230103	Pong Tuek	Tree plantation project	200	Tree	1000	Human Resource Development Community Sustainability Organization		✓
230103	Pong Tuek	NREM strengthening	4	time	1600	Human Resource Development Community Sustainability Organization		✓
Administration and Security								
230103	Pong Tuek	Land law dissemination	4	time	1600	Human Resource Development Community Sustainability Organization		✓
230103	Pong Tuek	Poor household listing preparation/support	4	time	2050	Human Resource Development Community Sustainability Organization		✓
Gender								
230103	Pong Tuek	Law against domestic violence dissemination	4	time	1600	Human Resource Development Community Sustainability Organization		✓
230103	Pong Tuek	Child protection network formation/strengthening	4	time	2050	Human Resource Development Community Sustainability Organization		✓
230103	Pong Tuek	Women vocational training	4	Course/year	8000	Human Resource Development Community Sustainability Organization		✓
230103	Pong Tuek	Women vocational training	4	Course/year	3200	Human Resource Development Community Sustainability Organization		✓

District Data Book 2009: Development Plans and Projects

Commune GIS	Commune	Temporary Agreements				Supporter	Funding Source	Listed in CIP before DIW
		Project Name	Quantity	Unit	Est.Cost (K.Riels)			
230103	Pong Tuek	Law against trafficking dissemination	4	Course/year	1600	Human Resource Development Community Sustainability Organization		✓
230103	Pong Tuek	Children's labor exploitation elimination	1	Course/year	600	Department of Women		✓
230103	Pong Tuek	Women vocational training	1	Course/year	600	Department of Women	PIF	✓
230103	Pong Tuek	Child protection network formation/strengthening	4	time	1600	Human Resource Development Community Sustainability Organization		✓

Source: CDPD, District Level Detail TA resulting from DIW

8.3 Outputs, estimated and actual costs of C/S Fund Projects between 2005 and 2008, by Commune

Commune	Project Type	Budget Year	Output		Quantity	Unit	Unit Cost MR	
			Description	Type			Estimate	Actual
Angkaol	Rural Transport	2005	Triple cell box culvert	New	1	Place	22.67	18.14
Angkaol	Rural Domestic Water Supplies	2005	Ring well	New	2	Place	3.00	2.40
Angkaol	Rural Transport	2006	Double pipe culvert	New	1	Place	2.11	23.95
Angkaol	Rural Transport	2006	Earth road	Repair	0.75	Km	20.13	23.95
Angkaol	Rural Transport	2006	Single pipe culvert	New	1	Place	1.91	23.95
Angkaol	Rural Transport	2006	Laterite road	Repair	0.65	Km	3.33	11.00
Angkaol	Rural Transport	2007	Double pipe culvert	New	1	Place	2.58	29.45
Angkaol	Rural Transport	2007	Earth road	Repair	1230	Km	29.27	29.45
Angkaol	Rural Transport	2008	Laterite road	New	1.6	Km	12.56	26.00
Angkaol	Rural Transport	2008	Earth road	Repair	1.6	Km	16.61	26.00
Ou Krasar	Rural Transport	2005	Single pipe culvert	New	2	Place	2.81	20.86
Ou Krasar	Rural Transport	2005	Laterite road	Repair	1.1	Km	21.46	20.86
Ou Krasar	Rural Transport	2005	Single cell box culvert	New	1	Place	2.81	20.86
Ou Krasar	Rural Transport	2006	Laterite road	Repair	0.6	Km	9.48	14.50
Ou Krasar	Rural Transport	2006	Double pipe culvert	New	3	Place	4.05	17.45
Ou Krasar	Rural Transport	2006	Laterite road	Repair	0.55	Km	13.50	17.45
Ou Krasar	Rural Transport	2007	Single pipe culvert	New	1	Place	1.41	16.32
Ou Krasar	Rural Transport	2007	Earth road	Repair	0.4	Km	5.82	16.32
Ou Krasar	Rural Transport	2007	Earth road	New	0.5	Km	4.76	10.00
Ou Krasar	Rural Transport	2007	Laterite road	Repair	0.5	Km	5.24	10.00
Ou Krasar	Rural Transport	2007	Double cell box culvert	New	1	Place	9.86	16.32
Ou Krasar	Rural Transport	2008	Earth road	Repair	0.9	Km	30.21	30.10
Pong Tuek	Irrigation	2005	Small water gate	New	1	Place	7.95	7.90
Pong Tuek	Rural Domestic Water Supplies	2005	Ring well	New	6	Place	9.00	7.40
Pong Tuek	Rural Domestic Water Supplies	2005	Pond with no filter	Repair	1	Place	6.00	5.00
Pong Tuek	Irrigation	2005	Small water gate	New	3	Place	15.52	11.40
Pong Tuek	Rural Domestic Water Supplies	2006	Ring well	New	7	Place	13.64	13.55
Pong Tuek	Irrigation	2006	Canal	Repair	1	Km	8.14	8.13
Pong Tuek	Irrigation	2006	Small water gate	New	2	Place	8.30	8.20
Pong Tuek	Rural Transport	2007	Earth road	Repair	1.136	Km	31.82	31.81
Pong Tuek	Rural Transport	2008	Earth road	Repair	1	Km	31.67	30.00

Source: PID

8.4 Total Expenditure on C/S Fund Projects by sector and commune between 2005 and 2008

Sector	Total Cost in Million Riels		
	Angkaol	Ou Krasar	Pong Tuek
Irrigation			35.63
Rural Domestic Water Supplies	2.40		25.95
Rural Transport	108.54	109.23	61.81

Source: PID

8.5 Actual 2009 C/S Fund projects by Commune

Commune	Project Type	Project Output		Quantity	Unit	Fund Source (Riels)		
		Description	Type			Total	C/S	Local Contribution
Angkaol	Rural Transport	Earth road	Repair	0.51	km	39,729,579	38,632,579	1,097,000
Angkaol	Agriculture	IFS trainings	New	1	course	32,821,128	32,821,128	0
Ou Krasar	Rural Transport	Laterite road	Repair	1.2	km	37,340,551	36,740,551	600,000
Ou Krasar	Agriculture	IFS trainings	New	1	course	31,144,000	31,144,000	0
Pong Tuek	Rural Transport	Earth road	Repair	1.1	km	43,476,000	42,666,000	810,000
Pong Tuek	Agriculture	IFS trainings	New	1	course	32,080,000	32,080,000	0

Source: PID

9 District level Projects from 2006 to 2009

District Initiative Projects (DIPs) are funded by Danida, DFID and PSDD (UNDP, DFID and SIDA).

Funding for 2006-2008

Between 2006 and 2008 there were 14 provinces funded by PSDD and 10 by Danida and DFID. The list of provinces and who funded these is below

Danida and DFID funded DIPs:

Kampong Cham	Kampong Speu	Koh Kong	Kratie	Monduliri
Pursat	Ratanakiri	Siem Reap	Sihanoukville	Kep

PSDD funded DIPs:

Banteay Meanchey	Battambang	Kampong Chhnang	Kandal	Phnom Penh
Prey Veng	Svay Rieng	Takeo	Kampong Thom	Preah Vihear
Stung Treng	Kampot	Oddar Meanchey	Pailin	

Funding for 2009

In 2009 there was a change to the number of provinces funded by the two streams. Danida and DFID were still funding the same 10 provinces they had been funding the previous three years, but two more provinces were added *Kampong Thom and Kampot*. Now PSDD funds 12 provinces and Danida and DFID fund 12.

9.1 District Initiative Infrastructure Projects from 2006 to 2009

9.1.1 District Initiative Infrastructure Projects for 2006 to 2008

Date	Project Name	Implementing Agencies	Budget (US\$)	Project Output & Capacity	Number of Beneficiaries
2006	Canal rehabilitation	Water resource department	6,824.00		
2006	Dam repair	Water resource department	3,448.00		
2006	Water gates	Water resource department	1,326.00		
2007	Rehabilitae canal 7317m	DWRM	12,695.00		

Date	Project Name	Implementing Agencies	Budget (US\$)	Project Output & Capacity	Number of Beneficiaries
2007	Rehabilitae Tanes dam, 308m	DWRM	4,346.00		
2007	Construct water gates of canal	DWRM	3,202.00		
2008	Dam rehabilitation of Rones	Inter-commune	6,225.76	800m	
2008	Water gate construction	Inter-commune	6,126.93	3 place	
2008	Canal reparation	Inter-commune	5,996.20	1150m	

9.1.2 District Initiative Infrastructure Projects in 2009

No District Initiative Infrastructure Projects have been implemented in this district for 2009

9.2 District Initiative Service Projects from 2006 to 2009

9.2.1 District Initiative Service Projects for 2006 to 2008

Date	Project Names	Implementing agencies	Budget (US\$)	Project Output & Capacity	Number of Beneficiaries
2006	NREM education for villagers	Environment department	762.00		
2006	Tree planting along canal	Environment department	3,035.00		
2006	Formation of NREM working group	Environment department	60.00		
2006	Monthly monitoring by working group	Environment department	1,460.00		
2006	Monthly meeting of working group	Environment department	240.00		
2007	Establish bio-diversity protection community of Rones dam	CBOs and Khan	2,446.00		
2007	Produce rubbish bins for public places	Khan	860.00		
2007	Establish working group to prevent from illegal NR activities	Khan Working Group	1,755.00		
2007	Establish working group to maintain trees along canals	Local Community	660.00		
2007	Dissemination on roles and resp of Khan Cadastral Committee	Khan Land Office	1,029.00		
2008	Annual workshop	Salakhan	163.00	1 workshop	9752
2008	Posters on NRM and environment protection	Dept of Environment	811.00	2 posters	6890
2008	Demarcation of mangrove forest boundary	Dept of Environment	2,022.00	50 concrete	7921
2008	Tree plantation	Sangkat Forestry Admin	1,822.00	1000 trees	5231
2008	Establishment of community for bio-diversity protection	DWRM	326.00	4 times	9752
2008	Prevention and crack down illegal NRM activities	Salakhan	1,005.00	4 times	9179
2008	Identification of mangrove forest protection	Dept of Environment	1,164.00	12 times	6420

9.2.2 District Initiative Service Projects in 2009

Project Name	Sector	Implementing Agency	Budget	Project outputs/ capacities	No. of Beneficiaries		Progress	Remarks on Issues of Progress
					Total	Female		
Support community farmer water user group	WRM	PDWRM	\$2,600.00	2 Community	8,465	4,390	0%	
Veal Vong dam fishery day	AGR	Fisheries Admin	\$3,200.00	1 time	8,465	4,390	0%	
Setup Ou Krasa community fishery	AGR	Fisheries Admin	\$2,000.00	1 Community	3,570	1,980	0%	

9.3 Inter Commune Council Projects in 2008 and 2009

9.3.1 ICC Projects in 2008

No ICC projects in this district at this time

9.3.2 ICC Projects in 2009

No ICC projects in this district at this time

Source: ICC project, Ministry of Interior (DoLA), -UNDP project for Local Governance – DDLG

9.4 Other Projects in 2008 and 2009

9.4.1 RPRP

There are no RPRP projects being implemented in this district or province at this time. The RPRP is only being implemented in Svay Rieng and Prey Veng

9.4.1.1 RPRP Projects from 2006 to 2008

No RPRP projects in this district at this time

9.4.1.2 RPRP Projects in 2009

No RPRP projects in this district at this time

9.4.2 Seth Korma

9.4.2.1 Seth Korma 2007

There are no Seth Korma projects being implemented in this district or province at this time.

Source: UNICEF

9.4.2.2 Seth Korma 2008

There are no Seth Korma projects being implemented in this district or province at this time.

Source: UNICEF

9.4.2.3 Seth Korma 2009

There are no Seth Korma projects being implemented in this district or province at this time.

Source: UNICEF

SECTION D: SERVICES AND ORGANIZATIONS

10 Infrastructure

10.1 Length of and Expenditure on Roads in 2008, by District

Roads	KEP	Damnak Chang Eour	KEP
Length of paved road in the district in Km	18	3	15
Length of unpaved roads in the district in Km	32	1	31
Amount spent on construction of roads in 2008 (\$)	45,441	29,941	15,500
Amount spent on repair and rehabilitation of roads in 2008 (\$)	n/a	n/a	n/a

Note 1: Please note that these data are not necessarily complete or correct. The data are derived from government agencies at provincial and district level which used different recording systems, did not always have complete data or were, sometimes, less than willing to share their data.

Note 2: Please be aware that these data are incomplete due to the fact that the amounts for the construction, repair and rehabilitation recorded reflect only funds provided by the government, not the contributions by any other parties.

10.2 Scale of and Expenditure on Irrigation in 2008, by District

Irrigation	KEP	Damnak Chang Eour	KEP
Number of irrigation schemes operating in 2008	16	12	4
Total nr of hectares under irrigation in dry season 2008	1,368	428ha	940ha
Total funds spent in 2008 on construction of irrigation systems (\$)	39,227	20,350	18,877
Total funds spent in 2008 on rehabilitation/repair of irrigation systems (\$)	4,851	3,755	1,096
Total funds spent in 2008 on operation and maintenance (\$)	n/a	0	0

Note 1: Please note that these data are not necessarily complete or correct. The data are derived from government agencies at provincial and district level which used different recording systems, did not always have complete data or were, sometimes, less than willing to share their data.

Note 2: Please be aware that the data above are incomplete as these only reflect funds provided by the government, not the contributions by farmers or other parties.

10.3 Power Supply in 2008, by District

Electricity	KEP	Damnak Chang Eour	KEP
Total number of electricity connections to households	891	391	500
Total number of electricity connections to agencies, companies, organizations	36	2	34
Total volume in KWh of electricity consumed last in 2008	n/a	n/a	n/a
Total amount collected from users for consumed electricity (\$)	6,038	6,038	n/a
Per capita electricity consumption in 2008 in Kwh	30	30	n/a

Note 1: Please note that these data are not necessarily complete or correct. The data are derived from government agencies at provincial and district level which used different recording systems, did not always have complete data or were, sometimes, less than willing to share their data.

Note 2: These data only record electricity provided by electricity companies and does not include homes powered by generators or batteries (for this information see Section B: General Profile, Part 1: General Information; table 1.3.1 and chart 1.3.4).

Note 3: In most provinces electricity is only provided through town-based networks

Note 4: Per capita consumption is calculated by dividing the total volume of electricity produced in 2008 by the number of people living in each district as per the 2008 census (for the provincial data it is calculated against the number of people living in the province)

11 Health Facilities

Please note that the Operational District (health) boundaries are different to the administrative district boundaries. Therefore the data provided here shows the facilities, staff, NGOs etc in each Operational District within the province NOT the administrative district.

Acronyms

Com Cov	Commune Covered	MW2	Secondary Midwives
CPA	Complementary Package of Activities	NU1	Primary Nurse
Dr	Doctor	NU2	Secondary Nurse
FDH	Former District Hospital	OD	Operational District
HC	Health Center	Others	Other Staff
HC (NB)	Health Center no building	PHD	Provincial Health Department
HP	Health Post	Pop 04-05	Population Covered 2004 or 2005
MA	Medical Assistant	RH	Referral Hospital
MPA	Minimum Package of Activities	Vil Cov	Village Covered
MW1	Primary Midwives	VIL-HC	Distance from Village to Health Center

11.1 Health Facilities in the Province, by Operational District

Krong Kep	OD	RH	HC	HP
Kep Ville	1	1	4	
Total	1	1	4	0

11.2 Health Facilities and Staff in the province, by Operational District

This table shows health facilities, staff and coverage of health facilities in each operational district.

No	Facility Name	Type	Class	Dr	Ma	Nu2	Nu1	Mw2	Mw1	Others	Com Cov	Vil Cov	Pop. 04-05
Kep Ville													
1	Angkoul	HC	MPA	0	0	1	4	1	0	1	1	4	7,355
2	Ou Krasar	HC	MPA	0	0	2	3	1	0	0	1	2	6,334
3	Pong Teuk	HC	MPA	0	1	1	5	1	0	0	1	5	8,905
Total:				0	1	4	12	3	0	1	3	11	22,594

Source: MEDiCAM – Infrastructure - (http://www.medicam-cambodia.org/hsi/health_system/srch/index.asp?cboLcn=6&cmdSearch=Search&cboCHName=&cboType=)

11.3 Deliveries in 2007 in the Province, by Operational District

OD	Deliveries	Deliveries at home		Deliveries	Total deliveries	Total deliveries
	at HC	By Health Staff	ByTBAs	at RH	by Health Staff	by health staff and TBAs
Kep	6	95	251	71	172	423
<i>Sub-total</i>	<i>6</i>	<i>95</i>	<i>251</i>	<i>71</i>	<i>172</i>	<i>423</i>

Source: MoH, Annual Statistics 2007

12 Education³

12.1 Schools, Classes, Students, Staff, for all levels, for 2007/2008 by District

District	Number of Schools	Disadv. Schools	Number of Classes	Classes in Pagoda	Enrollment		Repeaters		Teaching Staff		Non-Teaching Staff		Total Staff	
					Total	Girl	Total	Girl	Total	Female	Total	Female	Total	Female
Damnak Chang Oeur	22	0	140	0	5,188	2,555	327	152	151	36	40	6	191	42
Kep	13	0	108	0	4,147	1,950	342	122	166	85	28	8	194	93
Whole Province	35	0	248	0	9,335	4,505	669	274	317	121	68	14	385	135
- Urban Area	35	0	248	0	9,335	4,505	669	274	317	121	68	14	385	135

12.2 Characteristics of Schools and School Principals for 2007/2008 by Commune

Commune	Number of Schools				2 - Shift	Floating	Schools	Attached	Schools Without		Characteristics of School Principals (Incharge)			
	Pre-Sch	Primary	College	Lycee	Schools	Schools	in Pagoda	Pre-Sch	Water Sup.	Latrine	Avg. Age	Avg. Service	U.Sec+ Ed.	Female
Angkaol	0	5	0	0	5	0	1	0	1	1	41.3	15.2	1	0
Ou Krasar	1	3	1	0	3	0	3	1	1	0	46.4	20.2	1	0
Pong Tuek	4	7	1	0	7	0	4	4	7	3	46.2	19.8	1	1

12.3 Enrolment by Level of Education, 2006/2007 by Commune

Commune	School	Pre school		Primary School		Lower Secondary School		Upper Secondary School		Enrolment	
		Total	Female	Total	Female	Total	Female	Total	Female	Total	Female
Angkaol	5	0	0	1333	650	0	0	0	0	1333	650
Ou Krasar	4	60	31	1205	578	0	0	0	0	1265	609
Pong Tuek	11	101	43	2051	978	590	288	0	0	2742	1309

³ All the data for section 12 comes from the Ministry of Education, Youth and Sport (MoEYS)

12.4 Enrolment by Level of Education, 2007/2008 by Commune

Commune	School	Pre school		Primary School		Lower Secondary School		Upper Secondary School		Enrolment	
		Total	Female	Total	Female	Total	Female	Total	Female	Total	Female
Angkaol	5	0	0	1269	609	0	0	0	0	1269	609
Ou Krasar	5	39	20	1110	529	196	112	0	0	1345	661
Pong Tuek	12	88	38	1830	897	656	350	0	0	2574	1285

12.5 Aspects of Enrolment for 2007/2008 by Commune

Commune	% Repeaters (Total)			% Over-age Enrollment (Total)			% Repeaters (Girl)			% Over-age Enrollment (Girl)		
	Primary	L.Sec.	U.Sec.	Primary	L.Sec.	U.Sec.	Primary	L.Sec.	U.Sec.	Primary	L.Sec.	U.Sec.
Angkaol	7.6	0.0	0.0	26.9	0.0	0.0	7.1	0.0	0.0	26.8	0.0	0.0
Ou Krasar	6.5	0.0	0.0	30.6	31.6	0.0	5.7	0.0	0.0	27.2	29.5	0.0
Pong Tuek	8.3	1.1	0.0	29.5	53.2	0.0	8.4	1.1	0.0	28.8	51.1	0.0

12.6 School Buildings for all schools in the District for 2007/2008, by Commune

Commune	Total Number of		Concrete/Brick Structure		Wooden Structure		Bamboo Structure		New Buildings		Buildings Without Good		
	Buildings	Rooms	Buildings	Rooms	Buildings	Rooms	Buildings	Rooms	Repaired	Constructed	Floor	Roof	Wall
Angkaol	8	26	7	23	1	3	0	0	0	0	1	1	1
Ou Krasar	5	27	5	27	0	0	0	0	0	1	0	0	0
Pong Tuek	13	58	13	58	0	0	0	0	0	1	3	1	1

12.7 Conditions of Classrooms and Existence of Separate School Office and Library, by Commune

Commune	Number of Class rooms	Number of Classrooms			Classrooms Without Good			Number of Furniture needed				Schools with Separate	
		in Pagoda	New Repaired	New Constr.	Floor	Roof	Wall	Desks	Chairs	Black-board	Teacher Table	Office	Library
Angkaol	20	0	0	0	3	1	3	0	0	0	2	3	2
Ou Krasar	21	0	0	5	0	0	0	0	0	0	0	1	2
Pong Tuek	49	0	0	5	7	3	3	30	38	1	8	3	2

12.8 Community Participation and Financing across all schools in the District for 2007/2008 by Commune

Commune	Parent Association				Commu. Teachers	Teaching Monks	PAP Fund (Riel)		Number of Schools Obtaining Funds from				
	Exists	Held Meet	Total	Female			per Student	per School	Sch. Income	Community	Gvt. For building	Abroad	IOs/NGOs
Angkaol	5	5	7	1	0	0	11,482	3,061,000	0	0	0	0	0
Ou Krasar	4	4	6	2	0	0	9,389	2,828,500	0	0	0	0	0
Pong Tuek	11	11	6	1	0	0	10,685	2,821,950	0	1	1	0	0

12.9 Percentage Student Flow Rates and Graduation by level 2006/2007, by Commune

Commune	Primary Level (Grades 1-6)			Lower Secondary Level (Grades 7-9)			Upper Secondary Level (Grades 10-12)			Successful Candidates		
	Promotion	Repetition	Dropout	Promotion	Repetition	Dropout	Promotion	Repetition	Dropout	Grade 6	Grade 9	Grade 12
Angkaol	83.3	7.3	9.4	0.0	0.0	0.0	0.0	0.0	0.0	143	0	0
Ou Krasar	83.8	6.0	10.2	0.0	0.0	0.0	0.0	0.0	0.0	145	0	0
Pong Tuek	78.5	7.4	14.1	78.0	1.2	20.8	0.0	0.0	0.0	212	95	0

13 Staff and Resources at the District

This chapter presents data from the District Information System, collected around the middle of 2009 unless otherwise specified.

13.1 District Councilors elected in 2009

Name	Sex	Year of Birth	Function	Phone
ឥន្ទ សារុន	M	1956	Chairperson of The Council	012-197 2407
ម៉ុង ឡឿន	M	1973	Councillor	012-781 581
សំ សារឿន	M	1970	Councillor	092-970 780
អ៊ុំ ស៊ីវម៉ែង	F	1975	Councillor	012-395 437
ឆាយ ម៉ែង	M	1947	Councillor	012-919 603
គង្គ សារ៉ាត	M	1952	Councillor	016-726 528
សុក ស៊ុនហាក់	M	1951	Councillor	085-444 660
កែវ តួន	M	1952	Councillor	092-251 432
កៅ តី	M	1947	Councillor	012-594 440
គង់ ណាត	M	1955	Councillor	012-710 491
ដៃត គួន	M	1944	Councillor	017-596 326

13.2 Committees of the Council

Please note at the time of producing the district data books the composition of the committees was not known for all district councils and therefore data were not available for 13.2.1, 13.2.2, 13.2.3.

13.2.1 Technical Facilitation Committee

13.2.2 Women's and Children's Affairs Committee

13.2.3 Procurement Committee

13.3 Board of Governors

Name	Sex	DoB	Function	Salary Level	Body	Phone
ទេព យុទ្ធី	M	1958	District Governor	ក.៣.៤	High Ranking Civil Servant	012-330 081
ហាស់ ស៊ូប៊ុន្ត	M	1981	District Deputy Governor	ក.៣.១៤	High Ranking Civil Servant	012-961 458
គឹម ថន្នី	F	1976	District Deputy Governor	ខ.២.៩	Medium Civil Servant	012-420 194

13.4 Offices under Sala Krong, Sala Srok and Sala Khan

Office Name	Chief		Deputy Chief		No. of Staff				Office Area (m2)	No of vehicle (public or program)	
					State		Contract			vehicle	moto
	M	F	M	F	M	F	M	F			
District/ Khan Cabinet	2	0	2	0	16	2	0	0	448.75	0	0
Adminnistration Office	1	0	0	0	4	1	0	0	89.75	0	0
Economy Office	1	0	0	0	5	0	0	0	89.75	0	0
Social Affair Office	0	0	0	0	3	1	0	0	89.75	0	0

13.5 Municipality/District/Khan line offices

Office Name	Chief		Deputy Chief		No. of Staff				Office Area (m2)	No of vehicle (public or program)	
					State		Contract			vehicle	moto
	M	F	M	F	M	F	M	F			
District/ Khan Police Headquarter	0	0	5	0	48	0	0	0	211.2	0	6
District/ Khan Military Police Headquarter	1	0	3	0	12	0	0	0	60	0	2
District/ Khan Military Subregion	1	0	2	0	13	0	0	0	72	0	0
Education Office	1	0	1	0	159	26	0	0	170	0	0
Lan Management Office	1	0	1	0	1	0	0	0	96	0	0

13.6 Properties and Equipment of District Administration

13.6.1 Buildings

Description	Unit	Number	Remark
Office building type			
- Concrete	building	0	
- Wood	building	0	
- Mixed	building	1	
Total floor space	m2		
- Concrete	m2	0	
- Wood	m2	0	
- Mixed	m2	359	
Building condition			
- Concrete	%	0	
- Wood	%	0	
- Mixed	%	85	
Office reserved land area	m2	0	
Total office land area	m2	2,400	

13.6.2 Means of Transport available at the District Administration

Description	Unit	Number	Remark
Vehicle (type, size and condition)	Vehicle	0	
Motorcycle (type, size and condition)	Motor	0	

13.6.3 Equipment in District Offices

Description	Unit	Number	Remark
Generator	per set	1	
Photocopy machine at the office	per set	0	
Private photocopy machine at the district town	place	2	
Telephone network (mobile line service)	network	4	012,097,...
Telephone network (land line service)	network	0	
Fax (include Fax number)	per set	0	
Computer	per set	2	
Printer	per set	0	
Scanner	Per set	0	
Number of computers those can access Internet and email services in the municipality/ district/khan office (including the technical line offices (please provide the email address)	set	0	
Typewriters (including the technical line offices)	per set	0	
Staff of Municipality/district/khan office can use computer	person	6	

13.6.4 Equipment and facilities at the District Town

Description	Unit	Number	Remark
Availability of electricity at noon	Nr Hours	12	
Private internet and email services in the municipality/ district/khan town.	place	1	

13.7 Registered Revenue of the District Administration in 2008⁴

Sources of Revenue	Revenue Collecting Agency	Estimated annual revenue (In Riels)
Shopping Store	Provincial Taxation Branch	1,100,000
Patent	Provincial Taxation Branch	800,000
Slaughter Hosue	Provincial Taxation Branch	1,260,000
Tax imposed on merchants	Department of Economy and Finance	1,000,000

13.8 Services in the District

13.8.1 Public Sector Services

Type of Infrastructure/services	Unit	Number	
		Public	Private
Schools			
Pre-school	room	8	1
Primary School	room	99	4
Secondary school	room	21	0
High School	room		
University	room		
Health			
Health post	place		
Health center	place	3	0
Referral Hospital	bed		

⁴ Please note that the data in this table are at best estimates. If the table appears blank it does not mean there is no revenue, just that the data have not been recorded/entered.

13.9 Civil Society Organizations active in the District

13.9.1 NGOs, Associations, Programs and Projects

Name	Abbr.	Sector Activities	No. of Target Communes	No. of Target Villages	Office in District
NA	None	អប់រំអក្សរសាស្ត្រខ្មែរ ចិន	1	4	Yes
NA	CABDICO	បណ្តុះបណ្តាលវិជ្ជាជីវៈជនពិការ	3	11	No
NA	CWR	អប់រំ បណ្តុះបណ្តាលវិជ្ជាជីវៈ	2	2	Yes
NA	IREACH	ផ្សព្វផ្សាយព័ត៌មាន ស្រាវជ្រាវតំរូវការ	3	11	Yes
NA	CIH	បញ្ជីគ្រួសារក្រីក្រ សេវាសុខភាព	2	11	No
NA	BAB	អប់រំ សុខាភិបាល កសិកម្ម	1	1	Yes
NA	FCW	រៀបចំសហគមន៍ចិញ្ចឹមគោ និងធនធានធម្មជាតិ	3	9	No
NA	minman	សន្តស្ស័យមី	2	3	No
NA	None	ព្រះពុទ្ធសាសនា	3	11	Yes

13.9.2 Political Parties active in the Municipality, District and Khan

Name	Abbr.	Office in District
Cambodian People Party	CPP	Yes
FUNCINPEC Party	FUNCINPEC	Yes
Human Rights Party	HRP	Yes
NRP	NRP	Yes
SAM RAINSY Party	Sam Rainsy Party	Yes

13.10 Private Sector Organizations

13.10.1 Registered Companies in 2008, by District

On private sector at commune and/or district level	KEP	Damnak Chang Eour	KEP
Businesses and Companies			
Number of registered agricultural enterprises (except family farms)	n/a	0	0
Number of registered shops, restaurants, transporters and other services	278	62	216
Number of manufacturing companies	27	23	4
Number of registered forestry enterprises	n/a	0	0
Number of registered mining companies	-	0	0
Number of financial institutions	10	10	n/a
Number of other commercial institutions	n/a	n/a	n/a
Estimated number of informal enterprises (not registered)	n/a	n/a	n/a
Employment			
Number of people employed in 2008 by companies or any other enterprises	443	287	156
Investment			
Amount invested in 2008 by private sector (\$)	n/a	n/a	n/a
Markets			
Number of markets, operating at least weekly	5	2	3

Note: These data are not comprehensive as different companies and business are registered with different departments and not all departments were able or willing to provide detailed information. The number of informal enterprises reflects a rough estimate, made at provincial level and could not be verified.

Source: Unofficially collected at Provincial Level

13.10.2 Farmers in 2008, by District

Credit	KEP	Damnak Chang Eour	KEP
Volume of credit provided to farmers in 2008 (\$)	n/a	n/a	n/a
Number of farmers receiving credit in 2008	175	83	92
Volume of credit provided to companies in 2008 (\$)	n/a	n/a	n/a

Note: Please note that these data are not necessarily complete or correct. The data are derived from government agencies at provincial and district level which used different recording systems, did not always have complete data or were, sometimes, less than willing to share their data.

Source: Unofficially collected at Provincial Level

SECTION E: POVERTY DATA

14 Data on Poverty

14.1 Predicted Poverty Rates for 2009, by commune

The **Predicted Family Poverty Rate** is based on a statistical model (robust multilevel mixed effect regression) at village level developed by the NCDD M&E Unit and uses CDB data for making an estimate of the predicted poverty rate (this is: *the portion of total families in the district or commune who are expected to be poor*) for the following year using current year data.

The basis for this predicted poverty rate also uses IDPoor (a project of the Ministry of Planning with technical assistance provided by GTZ) data

Commune	2004	2009
Angkaol	35.70%	23.80%
Ou Krasar	33.90%	23.20%
Pong Tuek	35.40%	25.80%

14.2 Poverty data from survey

14.2.1 Identification of Poor Households Program (IDPoor)

The Ministry of Planning IDPoor Program has developed standardized Procedures for Identification of Poor Households in rural areas. These Procedures are implemented using a participatory and consultative process by sub-national government structures and community representatives.

The IDPoor Program is managed by the Ministry of Planning (MOP), in cooperation with the Ministry of Interior's Department of Local Administration (DOLA). The program is supported by the Federal Republic of Germany, with technical assistance provided by German Technical Cooperation (GTZ). In 2009, AusAID also provided funding support to the Program.

Objective

The IDPoor Program aims to implement the Procedures for Identification of Poor Households in rural areas as widely as possible, in order to provide data on the level of poverty of areas and households that can be used by a large range of institutions and organizations for targeting services and development assistance to poor areas and poor households.

Coverage: During 2007, 2008 and 2009 the IDPoor Procedures have been implemented in 18 provinces (with partial or complete coverage), covering a total of around 7000 rural villages. The MOP and a number of NGO partners who are Health Equity Fund Operators have collaborated in collecting this data from different areas.

Categorization: Identified poor households are classified under two poverty categories: Poor Level 1 (very poor), and Poor Level 2 (poor). Households are classified based on data collected using a standard questionnaire, together with consideration by villagers of these households' special circumstances.

Further information: Please go to the IDPoor Program webpage at www.mop.gov.kh/Projects/IDPoor/tabid/154/Default.aspx

This District has not yet been covered by IDPoor